



14 BOILER HOUSE

BATTERSEA POWER STATION

3 BED - 4 BATH

Great opportunity to purchase
One of the largest duplex 'Villas'
set on top of the Boiler House
with great views towards the
Power Station and the River.



COPPERSTONES
PROPERTIES

Battersea Power Station

Live in a London landmark (Phase 2)

With chimneys that touch the sky, Sir Giles Gilbert Scott's design of the Power Station elevated what was a functional building to an Art Deco masterpiece.

Re-imagined by architects WilkinsonEyre with interiors by Michaelis Boyd, Battersea Power Station is a home framed by six million lovingly restored blocks. Home to the best of contemporary, modern life.

From 1930s elegance and opulence to contemporary clean lines, the Heritage interior palettes produce a seamless blend of old and new for a refined living space.



Every brick tells a story

History meets hi-tech at Battersea Power Station. Nestled in the carefully restored original facade are three neighbourhoods: Switch House West, Switch House East, with Boiler House Square in the centre.

253 new homes in total, some featuring the original brickwork of the Power Station itself – others crafted with a more modern aesthetic. All will have access to the extraordinary rooftop gardens that offer a unique perspective of the station's towering 51-metre chimneys.

All this will be infused with the energy of the neighbourhood – the bustling entertainment quarter – with its 1,400-capacity event space, cinemas, restaurants, retail, parks and public piazzas – will be a small city in itself, with a dazzling choice of dining, shopping, socialising and live shows.





Copperstones are delighted to present this enormous and mesmerising 3 bedroom 4 bathroom ‘Villa in the Sky’ located on top of the prized Boiler House Square within the iconic Battersea Power Station building which is currently going through a major restoration and rejuvenation plan. Boiler House Square is the highest square in the city of London housing a collection of 20 duplex villas and breath-taking roof gardens.

You benefit from great amenities all around you with the power station shopping centre and variety of restaurants, bars and coffee shops to choose from at your doorstep.

- Great transport links;
- underground station
 - Uber boats
 - walking distance to Chelsea bridge and Battersea Park
 - great bus links

BATTERSEA POWER STATION

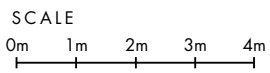
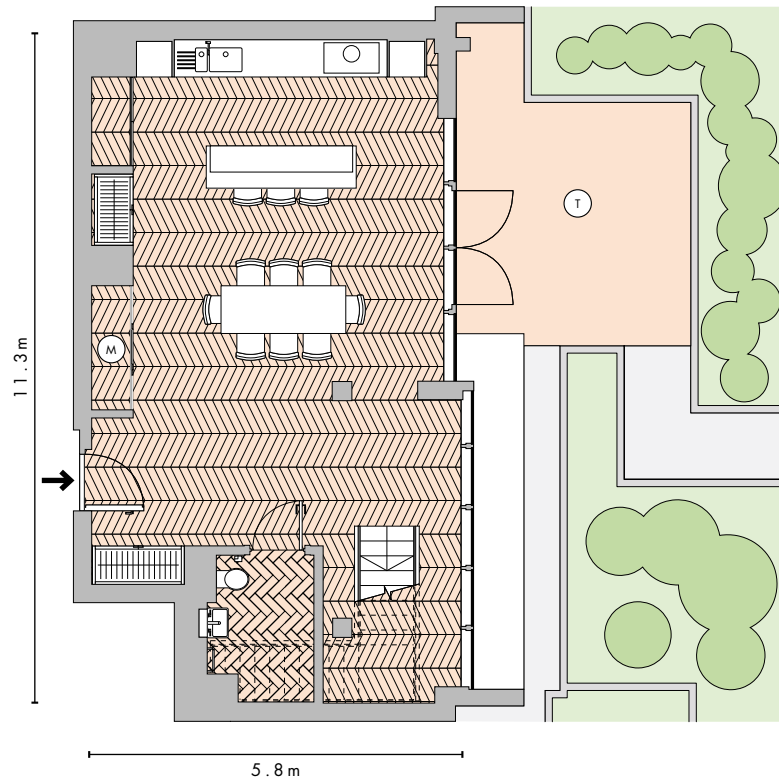
BOILER HOUSE SQUARE



3 BED, 4 BATH
2,765sq ft / 257sq m

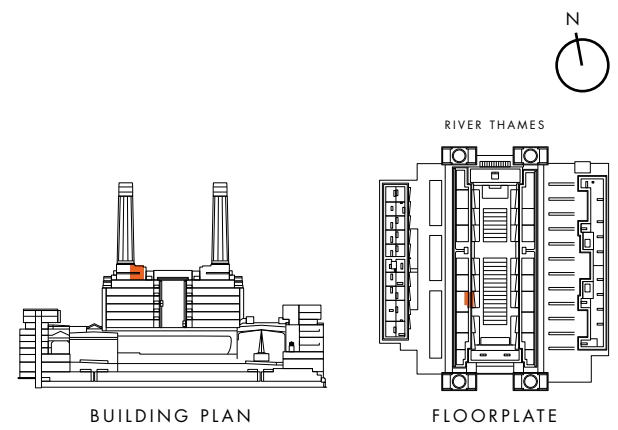
TERRACE
547sq ft / 50.8sq m

ROOF TERRACE
1,564sq ft / 146.3sq m



- (M) Mechanical Cupboard (T) Terrace
- (E) Electrical Cupboard (V) Void
- (WM) Washing Machine → Entrance

Any areas, measurements or distances shown in any text or plan are indicative only and are for information purposes only and may be different once actually constructed. Prospective purchasers and others should not scale from any of the drawings contained within this brochure and any marketing materials.



BATTERSEA POWER STATION

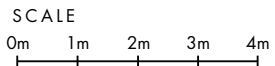
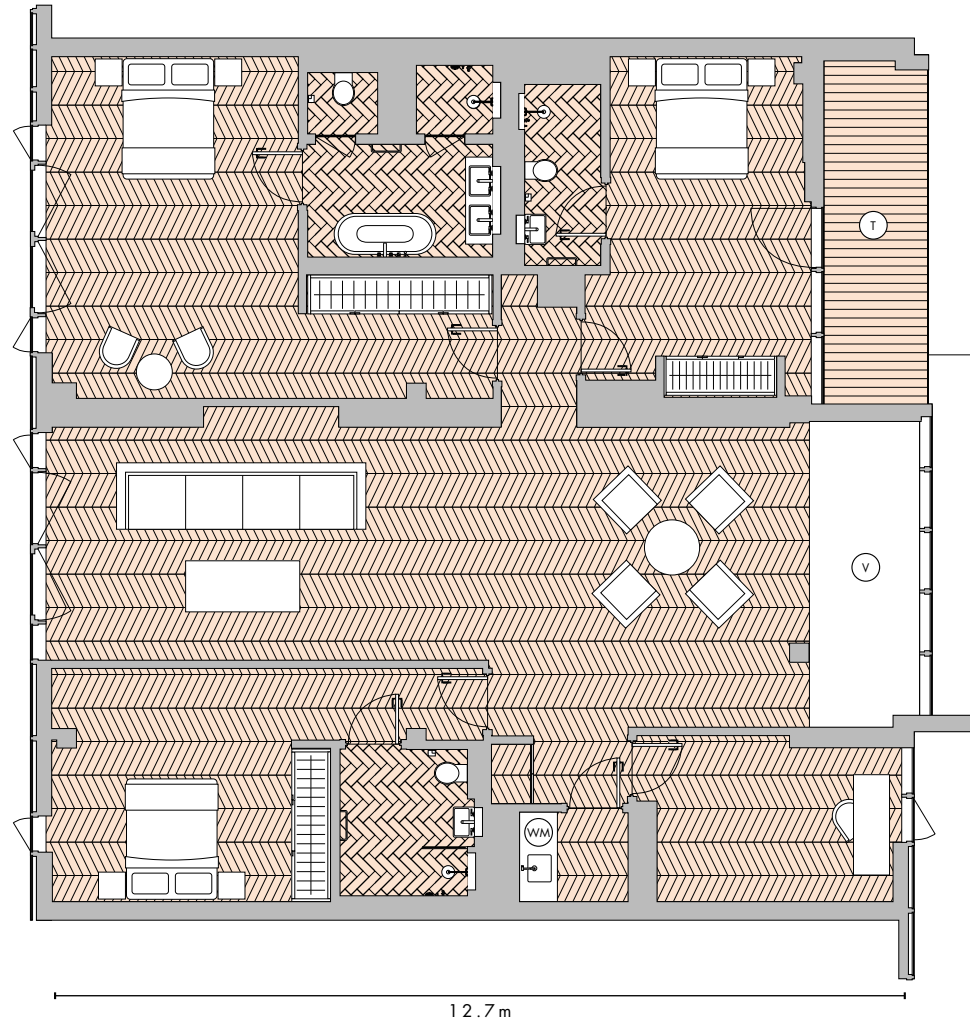
BOILER HOUSE SQUARE



3 BED, 4 BATH
2,765sq ft / 257sq m

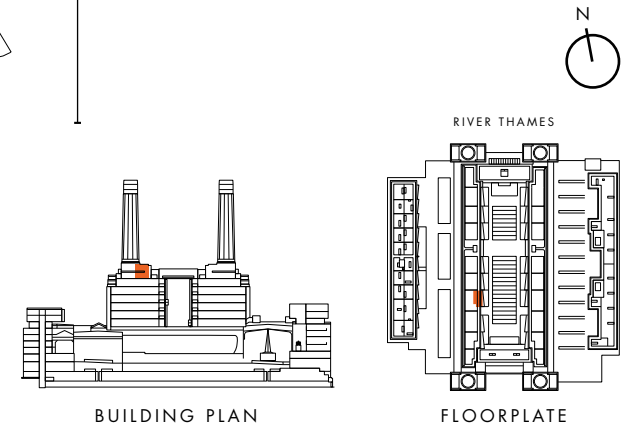
TERRACE
547sq ft / 50.8sq m

ROOF TERRACE
1,564sq ft / 146.3sq m



- M Mechanical Cupboard
- E Electrical Cupboard
- WM Washing Machine
- T Terrace
- V Void
- ➔ Entrance

Any areas, measurements or distances shown in any text or plan are indicative only and are for information purposes only and may be different once actually constructed. Prospective purchasers and others should not scale from any of the drawings contained within this brochure and any marketing materials.



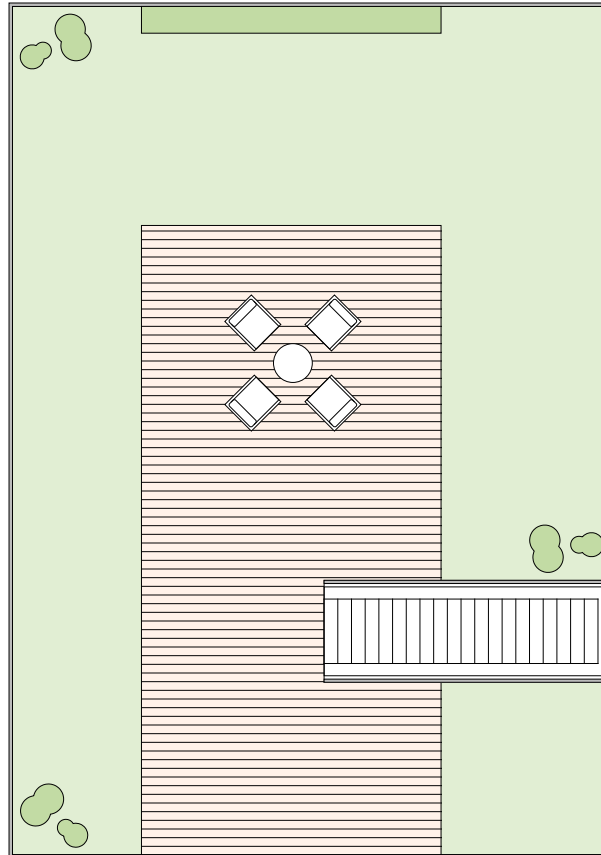
BATTERSEA POWER STATION

BOILER HOUSE SQUARE

3 BED, 4 BATH
2,765sq ft / 257sq m

TERRACE
547sq ft / 50.8sq m

ROOF TERRACE
1,564sq ft / 146.3sq m

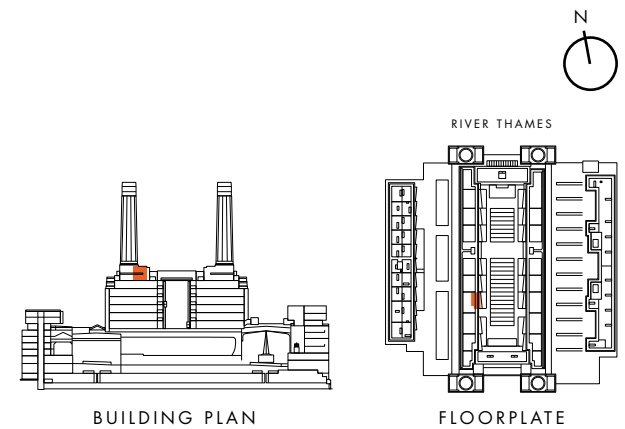


SCALE

0m 1m 2m 3m 4m

- | | |
|-------------------------|-------------|
| (M) Mechanical Cupboard | (T) Terrace |
| (E) Electrical Cupboard | (V) Void |
| (WM) Washing Machine | ➔ Entrance |

Any areas, measurements or distances shown in any text or plan are indicative only and are for information purposes only and may be different once actually constructed. Prospective purchasers and others should not scale from any of the drawings contained within this brochure and any marketing materials.



BUILDING PLAN

FLOORPLATE

Property Photos



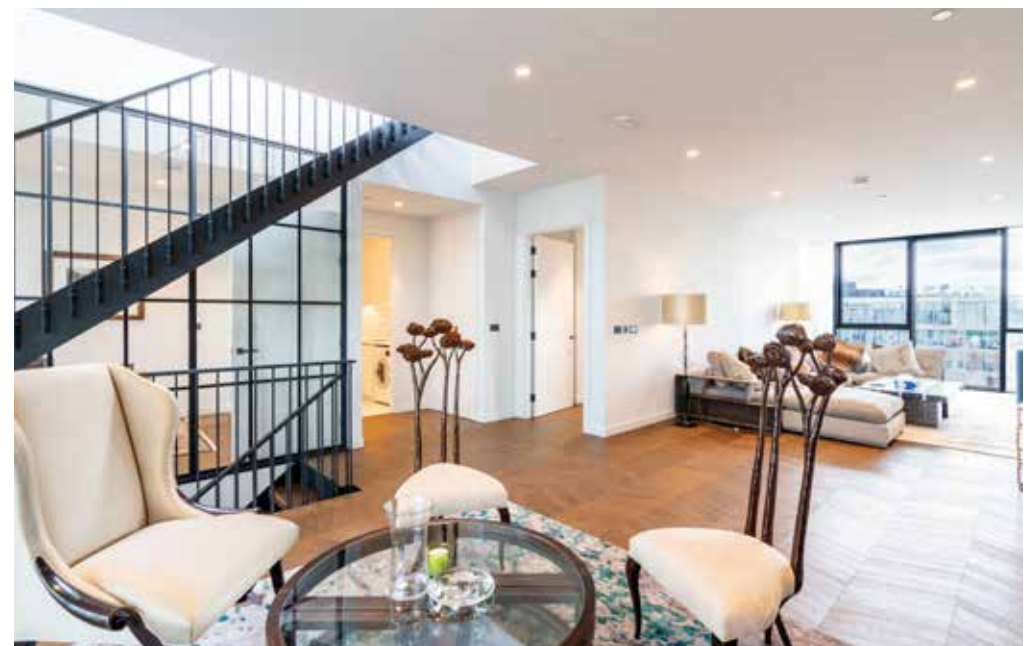
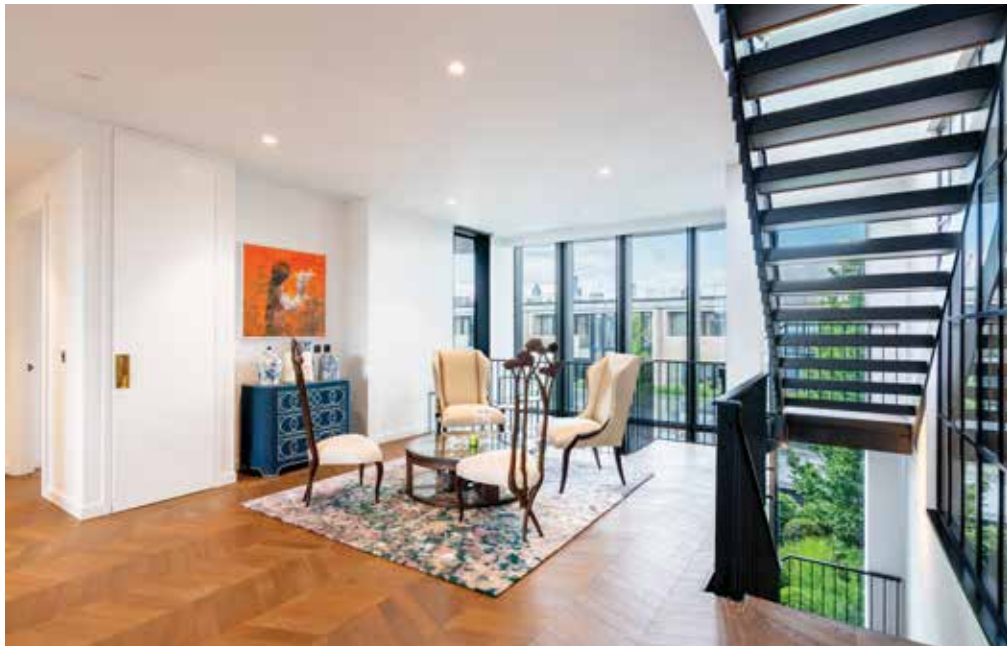
Property Photos



Property Photos



Property Photos



Property Photos



Property Photos



Property Photos



Property Photos



Property Photos



Property Photos





The apartment comes with great extensive residential amenities they include;

- full concierge service 24/7
- full access to onsite manned security who patrol the site 24/7
- cinema room
- meeting rooms
- function room
- games room
- residential restaurant/ bar
- residential spa, swimming pool and manned fully serviced gym



You also enjoy access to a residential app that gives you straight access to your estate management and what is happening in and around the area to keep you up to date with all events.



Battersea Power Station

A place like no other

Battersea Power Station is one of central London's largest, most visionary regeneration projects with one of the country's most well-known cultural and architectural landmarks – the iconic Grade II* listed Power Station – at its heart.

Around every corner you'll find world-class architecture. From Foster + Partners' Battersea Roof Gardens to Gehry Partners' masterful Battersea Prospect Place.



With a new Zone 1 Northern Line Underground station also opening, Battersea Power Station will be connected to all major transport routes across the city and beyond. Electric Boulevard, a new pedestrianised high street, will bring homes, offices, restaurants, shops, bars, public spaces including Prospect Park and a boutique hotel with a rooftop pool to this exciting new neighbourhood on the banks of the River Thames.

Surrounded by a six-acre riverside public park, the Power Station itself will be home to 253 apartments, a 2,000-capacity events space, 40,000 sq ft co-working office space from No18 and Apple's new 500,000 sq ft London Campus in the Boiler House. The two turbine halls will host 420,000 sq ft of retail and food and beverage space.

A stunning selection of studios, one, two, three and four-bedroom apartments, townhouses and penthouses are available to buy now across three unique buildings.

The Masterplan

42 Acre Neighbourhood, 25,000 People, 250+ Shops, 1,400 Capacity Event Venue



- PHASE 1** Circus West Village
- PHASE 2** Battersea Power Station
- PHASE 3A** Prospect Place
- PHASE 3A** Battersea Roof Gardens

The neighbourhood is already home to more than 1,000 people and 20 businesses. When the whole 42 acres are complete, there will be more than 250 shops, cafés and restaurants, along with a village hall, community hub, medical centre, hotel and 1,400-capacity event venue.

This vibrant riverside destination is set to be one of the largest retail, leisure, culture and office quarters in London, open and thriving 7 days a week.

So much so that Apple has leased 500,000 sq ft of space within the Boiler House, making the Power Station its new London campus for up to 3,800 employees.

Offering 17,000 new jobs, Battersea Power Station is fast becoming a real place of opportunity for the local community and beyond. The local economy has already been boosted by the retail and social buzz of Circus West Village – soon to be joined by Electric Boulevard, attracting visitors from all around the world.

Getting around

Extremely well connected

Battersea Power Station is London's newest and most exciting quarter. It is well connected, with easy access to the West End, the City and beyond.

Just two minutes away sits sprawling 200-acre Battersea Park, with its own zoo, crazy golf course and outdoor adventure playground. The new Zone 1 Northern Line Extension will join the rest of the network at Kennington, providing easy access to the West End, Central London and the City within 10-12 minutes. Battersea Park and Queenstown Road stations are also close by, offering rail links into Victoria and Waterloo.

The MBNA Thames Clippers River Bus offers a new perspective on the delights of the capital. And when it comes to exploring the globe, Heathrow and Gatwick airports are both within easy reach by road and rail.



KEY

- Northern Line
- Central
- Circle
- District
- Hammersmith & City
- Jubilee
- Metropolitan
- Bakerloo
- Piccadilly
- Victoria
- Waterloo & City
- Northern Line Extension
- Crossrail / Elizabeth Line (Due for completion in 2019)
- National Rail
- Overground
- Trams



CROSSRAIL

Once complete, Crossrail will be accessible via Tottenham Court Road station, which can be reached in under 15 minutes. Passengers can then directly access both Heathrow to the west and Canary Wharf to the east.



RIVER BUS

The Power Station's new jetty is served by the MBNA Thames Clippers River Bus, carrying passengers along the Thames to the west towards Putney, and to the east to London Bridge and Canary Wharf.



AIRPORTS

44 mins to Gatwick Airport.
55 mins to London City Airport.
52 mins to Heathrow Airport.
1h 30 mins to Luton Airport.
1h 25 mins to Stansted Airport.



LONDON UNDERGROUND

With its new Northern Line Extension in Zone 1, Battersea Power Station will be accessible to 92% of London Underground stations.

Central London Location

One of the most accessible locations in London

A short walk from Chelsea and Sloane Square, Battersea Power Station is located moments away from the new US Embassy and with 450 metres of river frontage. It is set to become the centre of the new Nine Elms neighbourhood.



BATTERSEA LIKE NEVER SEEN BEFORE

No one knows
Battersea Power Station
like we do



17-19 Crawford Place, London W1H 4LG, U.K.

Call **+44 203 888 5555**

Mobile/Whatsapp **+44 7784 555 555**

WWW.COPPERSTONES.COM

