

abbotFox



Upper St Giles Street, NR2
£925 PCM

“

We are a team of genuine individuals who hold a deep passion for both property and marketing. Collectively, we bring over 70 years of experience in the property market of Norfolk and Suffolk. Our affection for both counties runs deep, and we are enthusiastic about sharing our passion with you.

Colin McKenzie | **Branch Partner**







THE DETAIL _____

Situated on the ever-popular Upper St Giles Street, this beautifully presented first-floor apartment offers generous proportions, period charm, and an unbeatable location right in the heart of Norwich.

The accommodation is both spacious and versatile, ideal for a range of buyers. It features a bright and welcoming lounge with sash windows that let in plenty of natural light, and a separate, spacious dining room which opens seamlessly into the well-equipped kitchen—creating a sociable, open-plan feel perfect for hosting or everyday living.

The bedroom is a standout feature, measuring an impressive 15'10 x 15'1, offering plenty of space for furniture as well as a calm, restful retreat at the end of the day. The apartment is completed by a generous three-piece bathroom with a clean, neutral finish and ample space.

Set within a characterful period building, the property is nestled on one of Norwich's most desirable streets, known for its charm, independent shops, and community atmosphere.

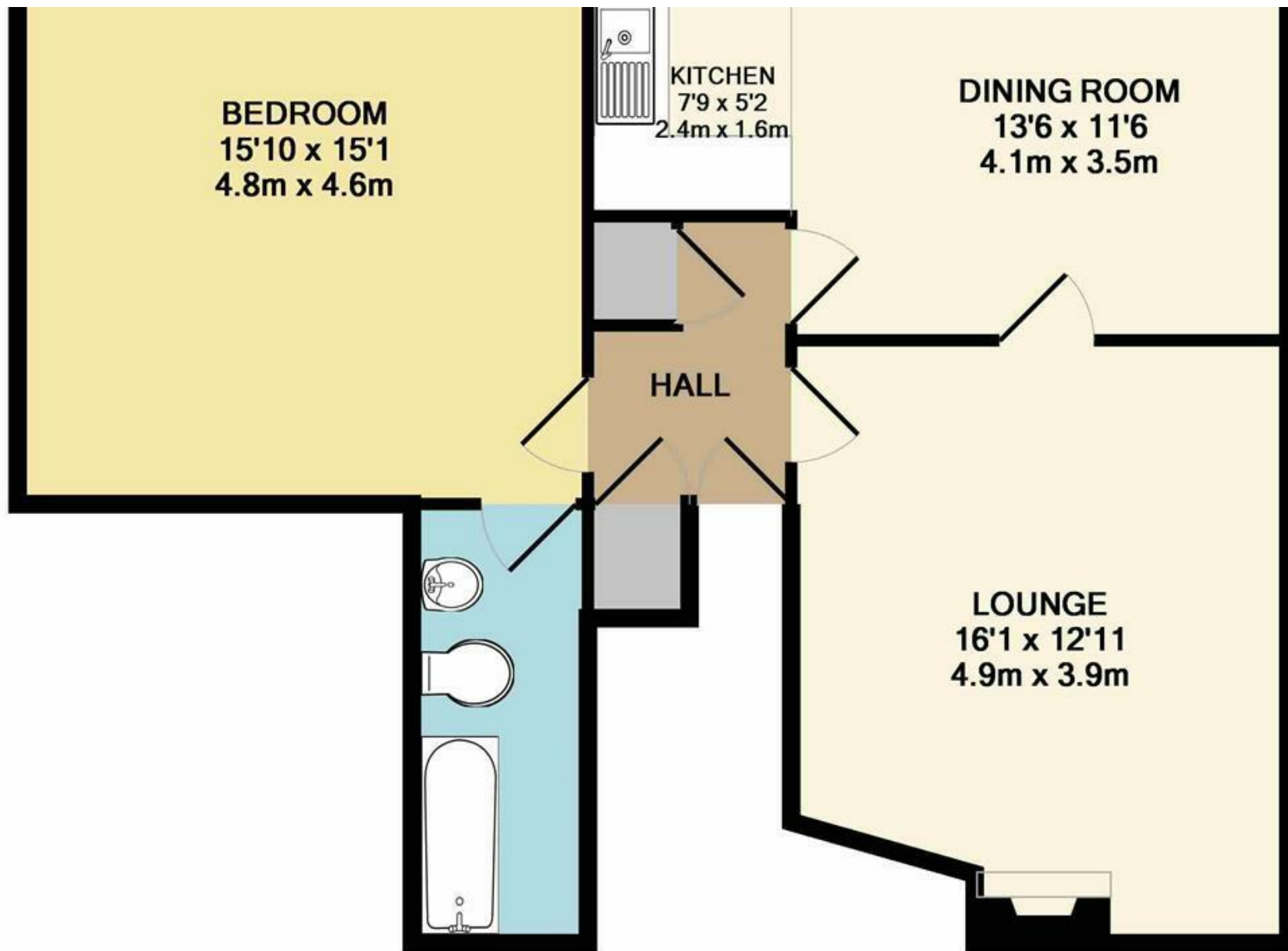
Just a short stroll from the vibrant city centre, you'll have everything at your fingertips—from two modern shopping malls and a bustling market to an array of cafes, restaurants, and boutique stores tucked away in historic lanes and cobbled streets. Norwich's two magnificent cathedrals and iconic Norman castle add to the city's rich cultural and architectural heritage, making this a truly special place to live.

Whether you're a first-time buyer, downsizer, or investor, this property offers a rare opportunity to own a spacious city apartment in a highly sought-after location. Early viewings are strongly recommended to avoid disappointment.



THE HIGHLIGHTS _____

- First floor apartment
- One bedroom
- Two reception rooms
- Generous bathroom
- Salubrious location



TOTAL APPROXIMATE COVERED AREA 70500 FT² (650000 CM²)

Let's talk

01603 660000

sales@abbotfox.co.uk

@abbotfox

EPC RATING -

Disclaimer – In accordance with the Property Misdescriptions Act, the company abbotFox gives notice that all descriptions, references to condition, necessary permissions for use and other details are given in good faith and believed to be correct, but any purchaser should not rely on them as statements of fact, and must satisfy themselves by inspection or other means, as to their accuracy.