

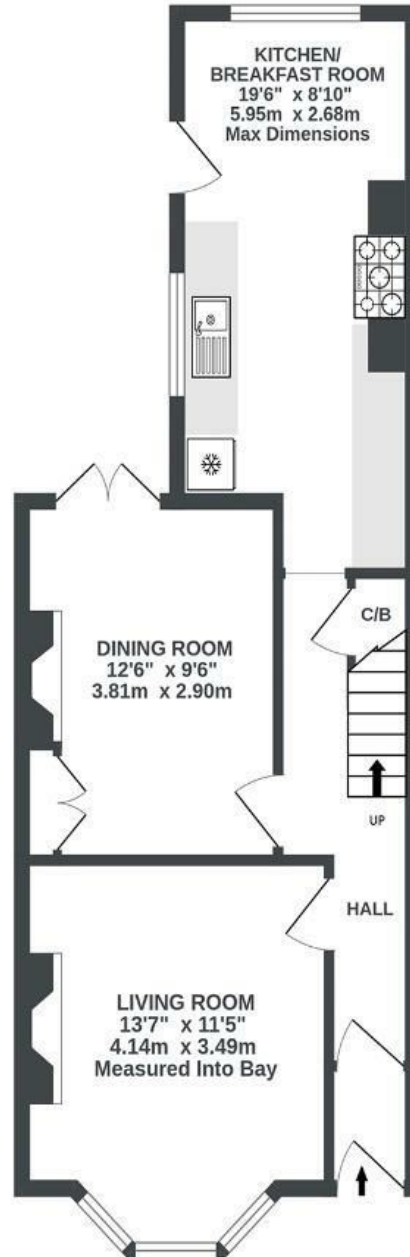
Cotswold Road

WINDMILL HILL

APPROXIMATE FLOOR AREA
110.6 SQM / 1191 SQFT



GROUND FLOOR
493 sq.ft. (45.8 sq.m.) approx.



1ST FLOOR
487 sq.ft. (45.3 sq.m.) approx.



2ND FLOOR
210 sq.ft. (19.5 sq.m.) approx.



Illustrations are for reference purposes only, measurements are approximate, not to scale.

Boardwalk

Cotswold Road , BRISTOL

£
£450,000

zzz
3 Bedrooms

📍
BS3 4PD

🛁
2 Bathrooms

"I fell in love with this house within minutes of stepping through the door. It has been our home for 20 years. I have raised 3 children here and it has served us well. Victoria Park has hosted picnics and parties and is ideal for dog walks. The neighbourhood is eclectic and there are so many great places like north street or the docks within walkable distance. We have all loved living in such a lovely house. It has its own personality and we will sorely miss it."

