



Lant Street, SE1

£850,000



- Two Bedrooms
- Two Bathrooms

- Open Plan
- Central Location

- High Ceilings
- Excellent Condition





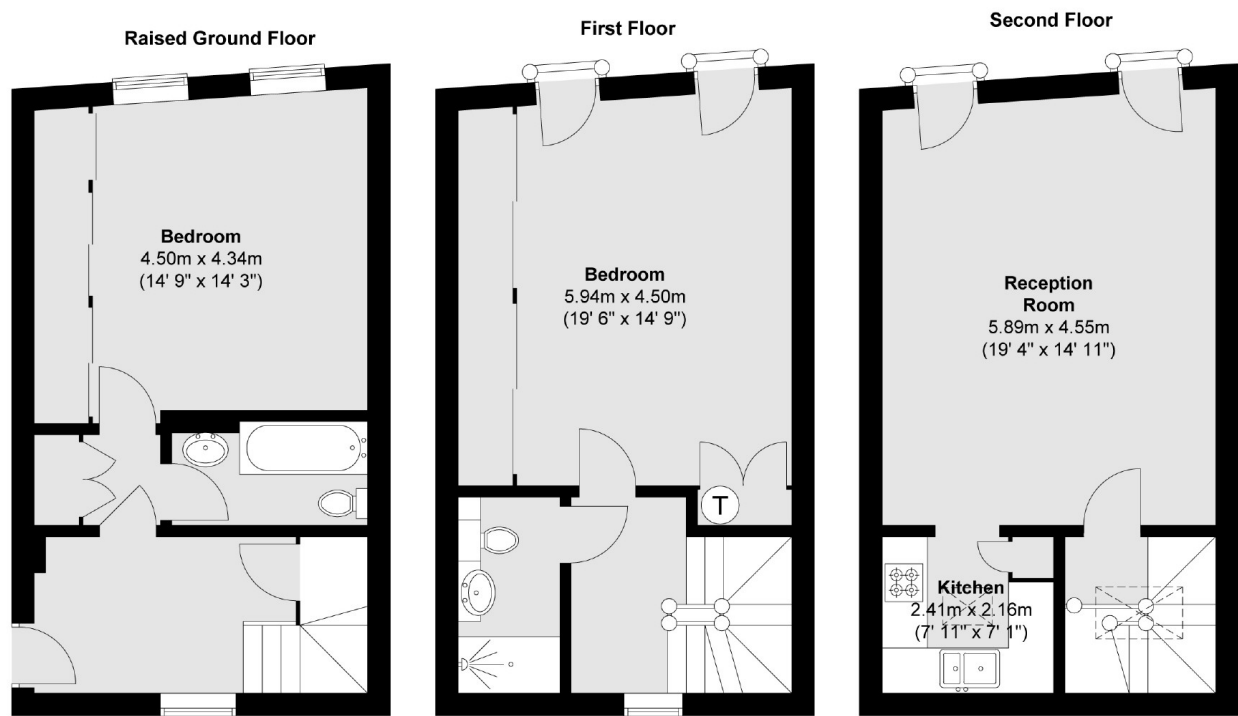
ABOUT THE PROPERTY

A beautifully presented two bedroom, two bathroom home, arranged over three floors, offering spacious rooms and lots of natural light.

With high ceilings throughout, the property benefits from floor to ceiling windows, modern interior and separate external bicycle storage.

Lant Street is located a short distance away from Borough tube station and is within close proximity to Borough Market and London Bridge. Nearby attractions include The Tate Modern, Shakespeare's Globe and the amenities of the South Bank.





Total area (approx.) : 108.8 sq. m (1171 sq. ft)
Total balcony area (approx.) : 0.5 sq. m (5 sq. ft)

Marsh & Parsons Kennington

295 Kennington Road,
London, SE11 4QE
020 7587 1533

We aim to make our particulars both accurate and reliable. However, they are not guaranteed; nor do they form part of an offer or contract. If you require clarification on any points then please contact us, especially if you're traveling some distance to view. Please note that appliances and heating systems have not been tested and therefore no warranties can be given as to their good working order.