



## Preseli Walk , Corby, NN18 8GL

- Spacious 6-bedroom house
- Two cosy reception rooms
  - Located in Preseli Walk
  - Ideal for large families
  - Easy access to transport
- Two modern bathrooms and a WC
  - Detached house built 2014
    - 1,808 sq ft of space
    - Close to local amenities
  - Viewing highly recommended



Local Authority  
Council Tax Band F  
EPC Rating C



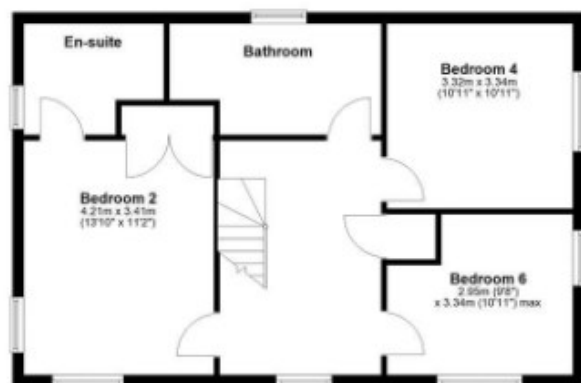
First Floor



Ground Floor



Second Floor



**Smartsale4u Office**

Suite 331 Kemp House, 152-160 City Road, London, EC1V 2NX

**Contact**

0204 572 9091  
info@smartsale4u.co.uk  
smartsale4u.co.uk

Agents Note: Whilst every care has been taken to prepare these particulars, they are for guidance purposes only. All measurements are approximate and for general guidance purposes only and whilst every care has been taken to ensure accuracy, they should not be relied upon and potential buyers/tenants are advised to recheck the measurements.