



Inverness Road, Hounslow, TW3 3LS

£439,950

A three bedroom semi-detached house situated off Staines Road with access to Hounslow Town Centre, local shops and bus routes. The accommodation comprises, on the ground floor, lounge, kitchen/diner and bathroom, on the first floor three bedrooms, outside front and rear gardens. The property also benefits from double glazed windows and central heating. Sold with tenants insitu.

A partner of
The Guild Of Professional Estate Agents
with a network of over 700 independent estate agents

Associated Office: 121 Park Lane, Mayfair, London W1K 7AG t 020 7318 7075

Entrance Hallway

Stairs to first floor.

Reception Room

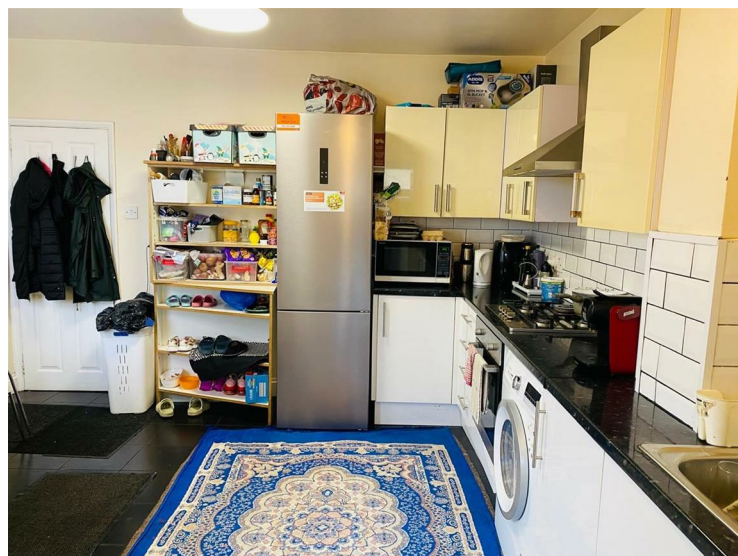


Front aspect double glazed window, radiator, understairs cupboard.

Kitchen/Diner



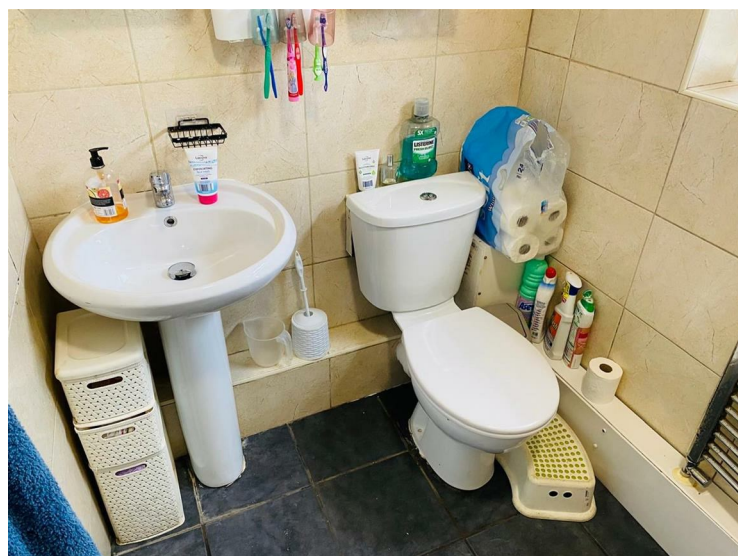
Single drainer stainless steel sink unit with mixer tap and cupboard below, further range of floor and wall mounted units, built-in hob with oven below and extractor above, space for washing machine and fridge/freezer, part tiled walls, tiled flooring.



Dining Area

Rear aspect double glazed window, radiator, door to garden and door to...

Bathroom



White suite comprising tiled enclosed bath with mixer tap and shower attachment, pedestal wash hand basin, low level w/c, heated towel rail, tiled walls and flooring, double glazed window.

First Floor Landing

Bedroom One

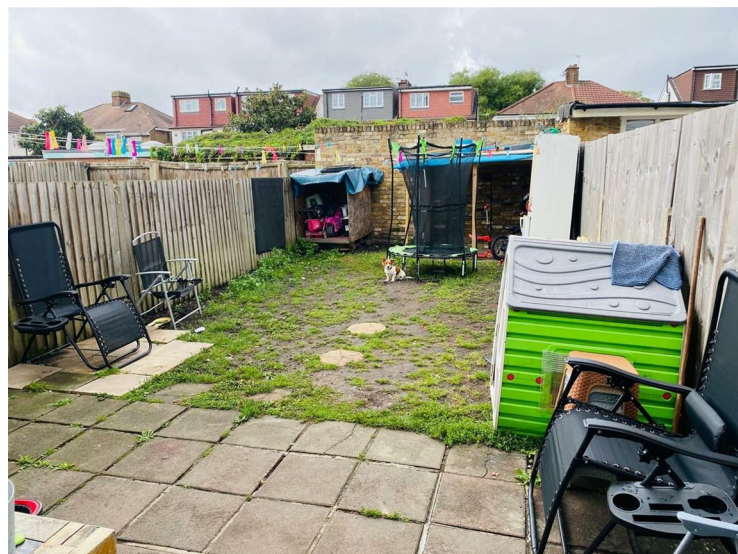
Front aspect double glazed window, radiator, storage cupboard.

Bedroom Two

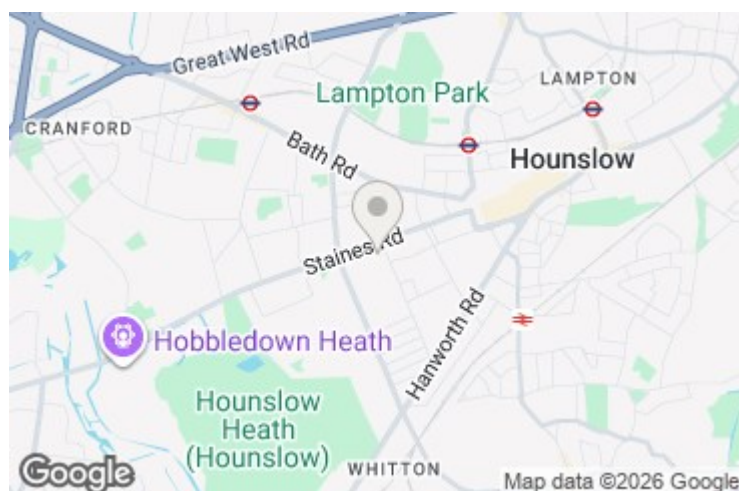
Rear aspect double glazed window, radiator.

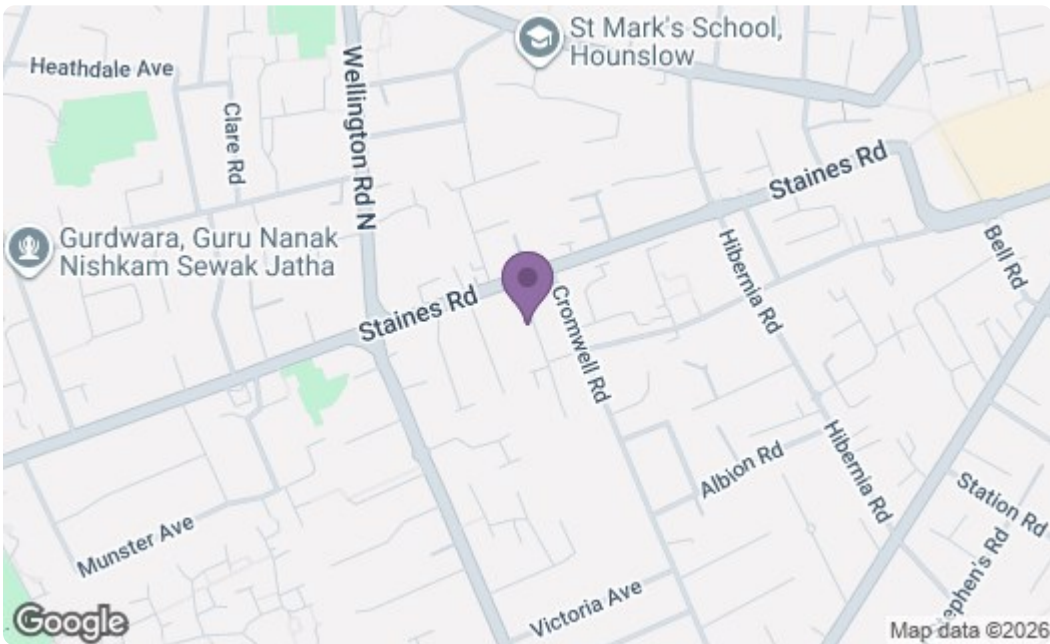
Bedroom Three

Rear aspect double glazed window, radiator.

Outside**Rear Garden**

Paved patio area, side access, rest laid to lawn.





| Energy Efficiency Rating | | Current | Potential |
|---|--|-------------------------|-----------|
| Very energy efficient - lower running costs | | | |
| (92 plus) A | | | |
| (81-91) B | | | |
| (69-80) C | | | |
| (55-68) D | | 63 | |
| (39-54) E | | | |
| (21-38) F | | | |
| (1-20) G | | | |
| Not energy efficient - higher running costs | | | |
| England & Wales | | EU Directive 2002/91/EC | |
| Environmental Impact (CO ₂) Rating | | Current | Potential |
| Very environmentally friendly - lower CO ₂ emissions | | | |
| (92 plus) A | | | |
| (81-91) B | | | |
| (69-80) C | | | |
| (55-68) D | | | |
| (39-54) E | | | |
| (21-38) F | | | |
| (1-20) G | | | |
| Not environmentally friendly - higher CO ₂ emissions | | | |
| England & Wales | | EU Directive 2002/91/EC | |

A partner of
The Guild Of Professional Estate Agents
 with a network of over 700 independent estate agents

Associated Office: 121 Park Lane, Mayfair, London W1K 7AG t 020 7318 7075