



9 Buttercup Close
Wellingborough, NN9 6GH



Simpson & Partners

An impressive executive five-bedroom detached family home, beautifully presented throughout and offering spacious, versatile accommodation ideal for modern family living. Occupying a generous plot, this superb property benefits from an attractive landscaped rear garden, ample off-road parking, and a single garage.

The accommodation comprises of a spacious entrance hall, giving access to a guest WC, a well-proportioned living room, and a versatile fifth bedroom/study, perfect for those working from home or requiring additional family space. To the rear of the property is a stunning kitchen/diner, providing an excellent entertaining and family area, complemented by a separate utility room for added convenience.

To the first floor, the property offers four double bedrooms and a stylish family bathroom. The main bedroom has a dressing room and an en-suite shower room.

Externally, the property continues to impress with a beautifully landscaped three-tier rear garden. The upper tier features a patio seating area with pergola, leading onto a laid lawn, while the lower levels provide further garden space and an additional patio area, along with a garden shed. To the front, there is a large driveway, single garage, and further block-paved parking added by the current owners, creating excellent off-road parking provision.

Viewing is highly recommended to fully appreciate the space, presentation, and outdoor setting this exceptional home has to offer. Call now to book your viewing!

£475,000



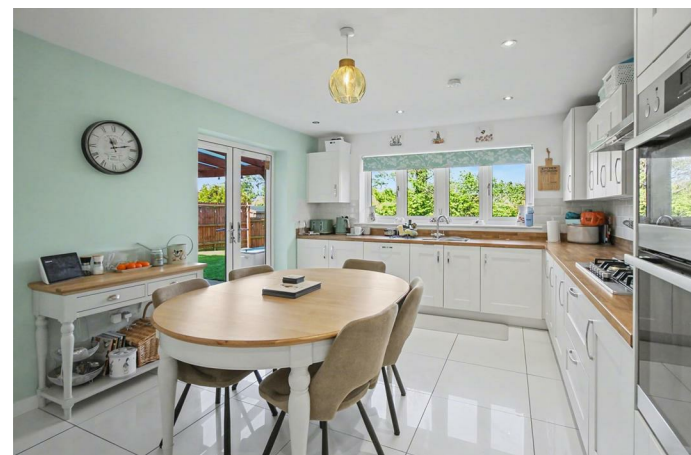
5



2

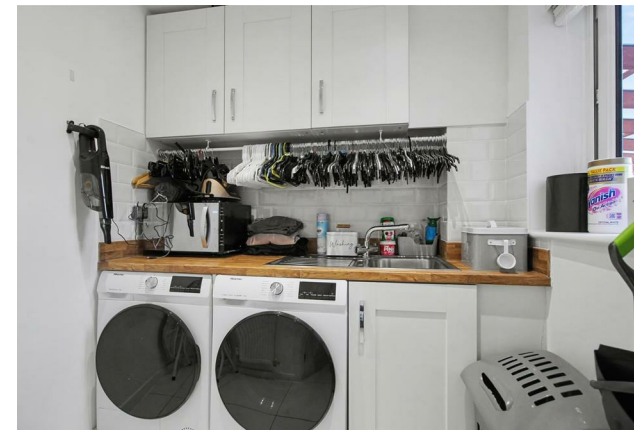
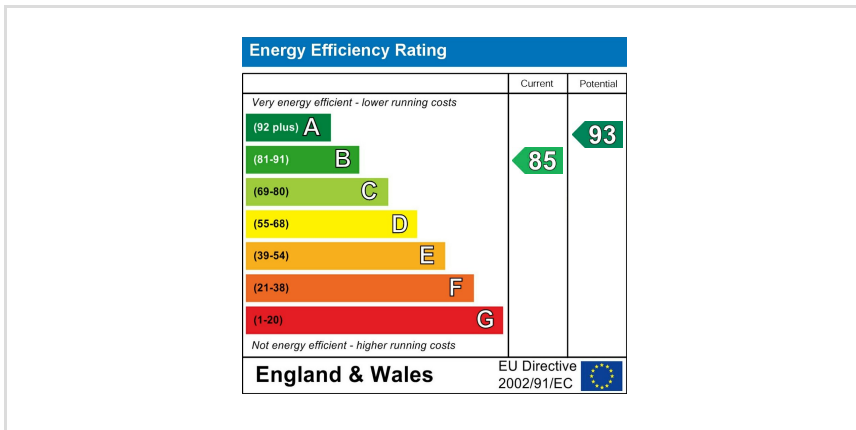
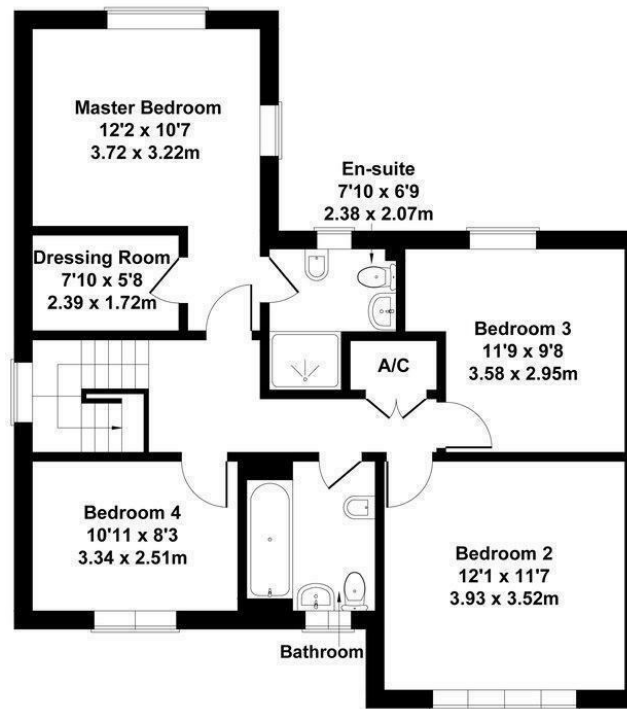
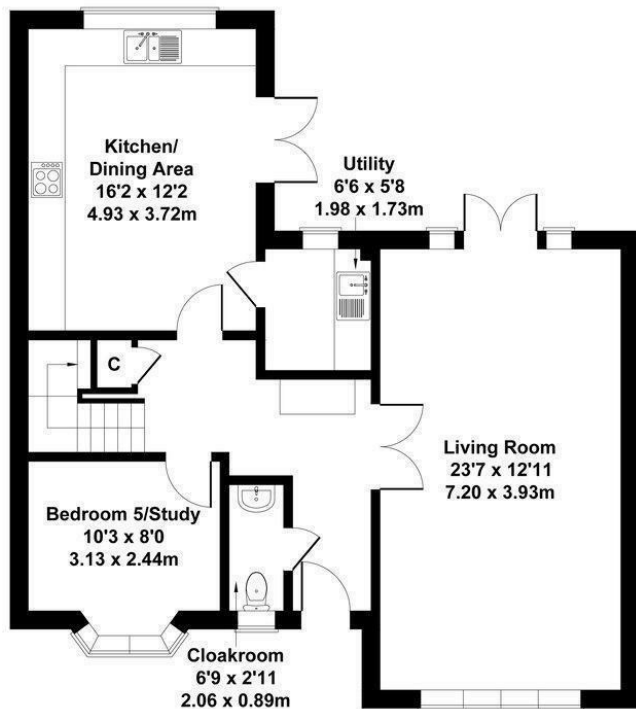


2



9 Buttercup Close

Approximate Gross Internal Area
1636 sq ft - 152 sq m



When you buy with Simpson and Partners, you know **you'll be in safe hands**. From the moment you walk through our doors, we'll make you **feel truly welcome**. Our sales consultants and financial advisors will take you through **every step of the process**, offering **free expert advice** along the way, from help choosing the right mortgage and insurance through to finding your conveyancer. And if you need help selling your home too, **with over 20 years of local experience, you can trust us to get you moving**.



**Simpson
& Partners**

Making Every
Journey Personal



01832 731222

thrapston@simpsonandpartners.co.uk

<https://www.simpsonandpartners.co.uk/>

43-45 High Street, Thrapston, Northants, NN14 4JJ