



Murray Street, Blaydon, Tyne And Wear, NE21 4QG

Living Local is delighted to welcome to the market, this rare four bedroom end terrace family home on Murray Street, Blaydon! Boasting homely open plan living on the grand floor with lounge, dining area, kitchen and utility off shot, all warmed by fabulous wood burning stove. To the first floor there are three good sized bedrooms and a family bathroom. The second floor hosting the master bedroom with bonus storage and shower room en-suite. Ideally located to Blaydon Precinct, local schools and travel links this is a property that is simply not to be missed out on. A property not to be missed out on! EPC Rating E.



CHAIN FREE

End Terrace

Four Bedrooms

Immaculately Presented

Spacious Open Plan Living Area

EPC Rating E

Offers Over £200,000

Lounge 19' 6" x 11' 10" (5.94m x 3.61m) Max

An open plan living space with feature wood burning stove with outlook into the enclosed rear yard.

Dining Area 13' 2" x 12' 1" (4.01m x 3.69m) Max

Open plan dining area from the lounge features outlook onto the front street area and benefits from a ornamental fireplace. ***Please note- the fireplace is for display purposes only.***

Kitchen 13' 10" x 6' 2" (4.21m x 1.88m)

Signature galley kitchen with range cooker and access to the enclosed rear yard.

Utility Off Shot

An off shot of space which currently houses washing machine and dryer along with bonus storage.

Bedroom 2 11' 8" x 11' 5" (3.56m x 3.48m) Max

Bedroom 3 12' 4" x 10' 7" (3.76m x 3.23m) Max

Family Bathroom 8' 2" x 5' 8" (2.48m x 1.73m)

The white suite main family bathroom benefits from bath with overhead shower, wash basin and W/C.

Bedroom 4 9' 2" x 8' 11" (2.79m x 2.71m)

Bedroom 1 18' 8" x 15' 9" (5.68m x 4.79m)

The main bedroom is located on the top floor and hosts its own shower room en-suite with extra storage.

En-Suite 6' 1" x 4' 4" (1.85m x 1.31m)

White suite shower room en-suite featuring W/C, Wash basin and walk in Shower.

Externally

The property is located close to Blydon Precinct and travel links, an easy commute to both Newcastle City Centre and the A1 bypass. On street parking is available to the front side and rear of the property.

Additional Information

Council tax band A. EPC Rating E. We understand this property is freehold. Mobile phone coverage and broadband availability: <https://checker.ofcom.org.uk/> Coal mining: The North East has a widespread coal mining heritage and many properties are built within the vicinity of historic coal mining. We have not been made of aware of any specific issues with this property. Your conveyancer may carry out a coal mining search.

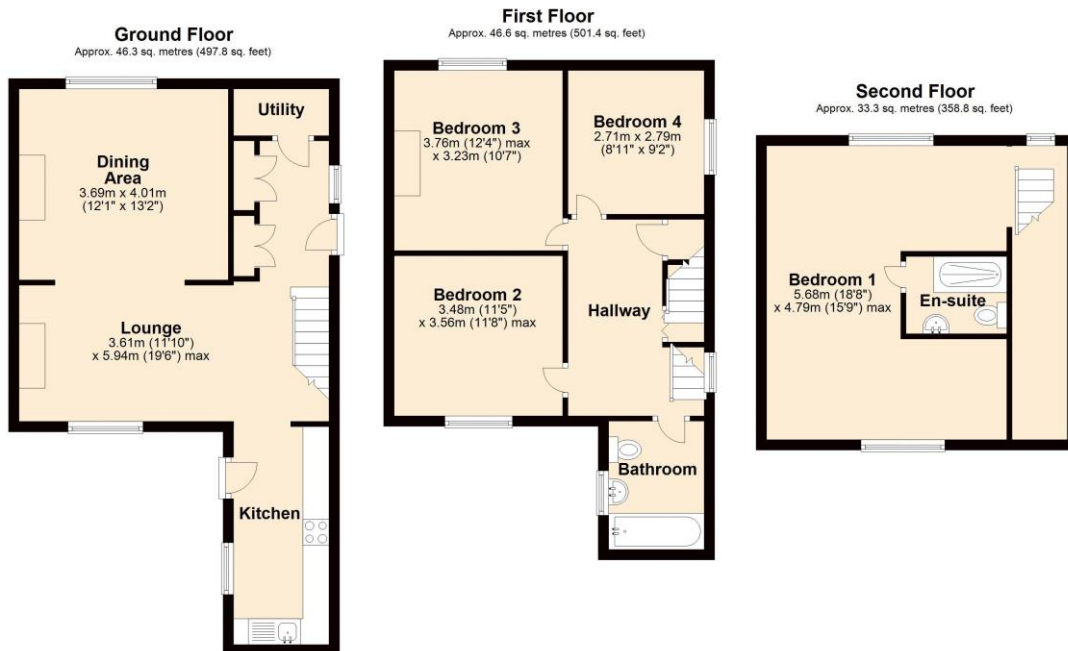
Important Note To Purchaser

We have prepared these sales particulars as a general guide to give a broad description of the property. They are not intended to constitute part of an offer or contract. The measurements are a guide to prospective buyers only and are not precise. We have not carried out a structural survey and the services, appliances and fittings have not been tested by us. If you require any further information, please contact us.



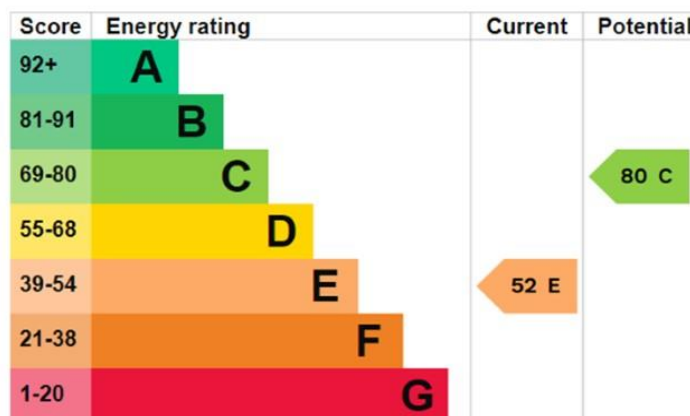


Floorplan



Total area: approx. 126.2 sq. metres (1358.0 sq. feet)

EPC Graph (full EPC available on request)



For more information please call **0191 414 1200** or email info@livinglocalhomes.co.uk

WE WIN AWARDS year-after-year and are currently ranked in the top 5% for lettings in the country!

Lorraine Valuer & Negotiator

Emma Owner & Managing Director

Laura
Sales & Lettings Negotiator

Brooke
Lettings
Co-ordinator

Louise
Sales & Lettings Negotiator



facebook

PRS Property
Residence
Scheme

rightmove

OnTheMarket.com

Zoopa.co.uk

PrimeLocation.com

firstmortgage.co.uk®

