



STYLISH AND TASTEFULLY PRESENTED BAY-FRONTED FOUR-BEDROOM, THREE RECEPTION ROOM EDWARDIAN END TERRACED 'FAMILY HOME'. The accommodation comprises its own front garden, a covered entrance doorway leading to a tessellated entrance hallway, and a large front reception room, a central dining room with a semi-open-plan fitted kitchen, a guest cloaks/WC, and an additional rear reception room with French doors leading out to an attractive rear garden. The property retains many fine period features and much of its original character and charm. It would ideally suit discerning purchasers looking for a 'ready to move into' home of quality that is easily accessible to all amenities, including Alexandra Palace National Rail (20/25 Mins City/West End), good schools, local shopping and the wonderful green open spaces of Alexandra Park & Palace.

**** LOFT SPACE POTENTIAL / 5TH BEDROOM**

Victoria Road, Alexandra Park, London, N22 7XA

£1,200,000 | Freehold

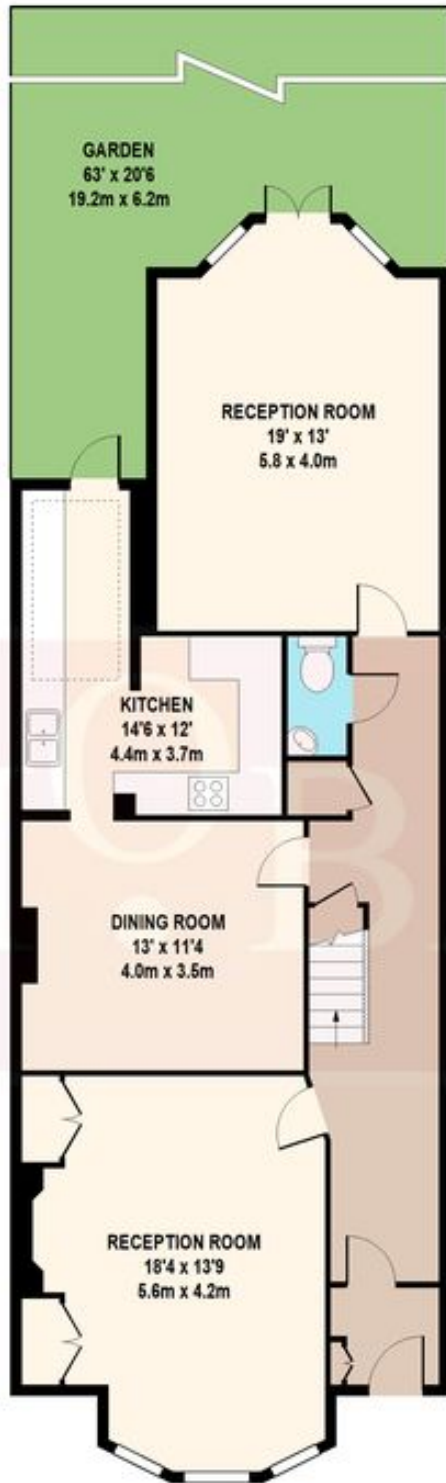
HOBARTS ESTATE AGENTS - LONDON (North)
8 CRESCENT ROAD
Alexandra Park
LONDON N22 7RS

sales@hobartsproperty.co.uk
www.hobartsproperty.co.uk
0208 348 3333



- Four Bedrooms
- Period Features & Characteristics
- Large Rear Garden
- Close to APS/ Sought-After Schools
- 20/25 Mins City/West End
- Close to Alexandra Park & Palace
- SIDE ACCESS TO REAR GARDEN

- Separate Fitted Kitchen
- Three Reception Rooms
- Close to Alexandra Palace Rail Station
- Edwardian Family Home
- Close to Shops/Transport
- LOFT SPACE POTENTIAL



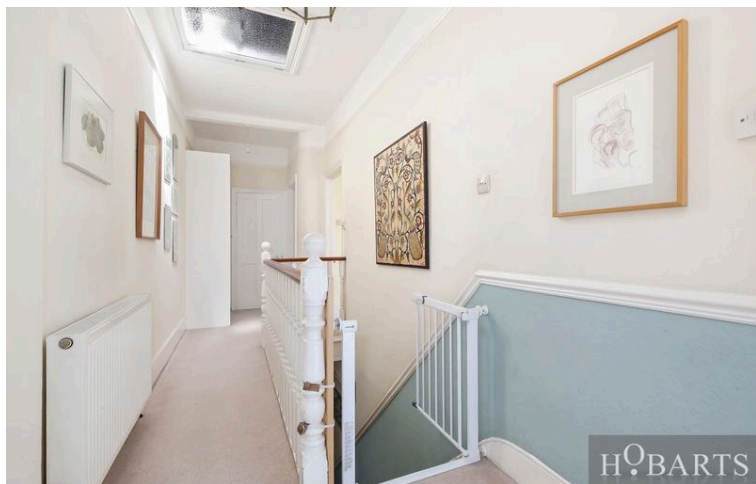
GROUND FLOOR



1ST FLOOR

VICTORIA ROAD
TOTAL APPROX. FLOOR AREA 1850 SQ.FT. (172 SQ.M.)

Whilst every attempt has been made to ensure the accuracy of the floor plan contained here, measurements of doors, windows, rooms and any other items are approximate and no responsibility is taken for any error, omission, or mis-statement. This plan is for illustrative purposes only and should be used as such by any prospective purchaser. The services, system and appliances shown have not been tested and no guarantee as to their operability or efficiency can be given.



Tenure:
Freehold

Viewings:
Strictly by appointment via
HOBARTS ESTATE AGENTS
0208 348 3333

Contact:
8 CRESCENT ROAD, Alexandra
Park, LONDON N22 7RS

sales@hobartsproperty.co.uk
www.hobartsproperty.co.uk

rightmove

PrimeLocation.com

homes24.co.uk

Zoopa.co.uk

propertyfinder.com



These property details, including measurements, floor plans and items depicted in photographs etc. are intended only as a brief guide to prospective purchasers and are not intended to be relied upon for any purpose whatsoever. Any interested party should satisfy themselves by inspection or otherwise as to the correctness of each statement contained in these details.