



83 Park Drive

Sprotbrough, Doncaster, DN5 7LP

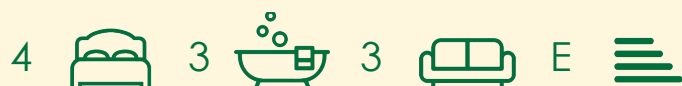
Offers Over £635,000

A rare opportunity to purchase a traditional 4 bedroom family home. New to the market after 30 years this unique property boasts a large fronted double access drive in the heart of Sprotbrough village with the ability to extend subject to permissions. Occupying a mature plot approx third of an acre boasting mature borders that offer a high degree of privacy yet lying within walking distance of the village amenities including, shops, bus routes and local restaurants. The accommodation has been extended over the years and offers a versatile layout. A sitting/dining room to the front with doors accessing a generous formal lounge with garden room boasting en-suite (potential for ground floor bedroom). Kitchen/breakfast room has space for a table and opens up to a snug with working fire, further side lobby leads to outside. First floor landing with 4 bedrooms, en-suite walk in wardrobe and en-suite to master, 4 piece family bathroom. Outside there are gardens to the front, driveway for 3 vehicles leading to a sheltered car port in addition to a detached garage. A further large timber workshop sits behind the garage as well as a small stable block adding further storage to the property. A tiered terrace together with lawned gardens, flowerbeds and borders featuring beautiful mature trees encompass the property. This property must be viewed to truly appreciate its position and character.

- Rare opportunity to purchase a double fronted property in the heart of the village
- Ideal for extending subject to local permissions
- 2 formal reception rooms
- Snug with open fire leads from kitchen/breakfast room
- Garden room with ensuite modern shower room (ground floor bedroom)
- Master bedroom with walk in wardrobe and ensuite
- Detached garage with utility and WC
- Stunning parkland gardens on approx 3rd acre.
- Ample parking with carport as well as detached garage
- Large timber workshop and small stable block to rear garden

Viewing

Please contact our Office on 01302 751616 if you wish to arrange a viewing appointment for this property or require further information.



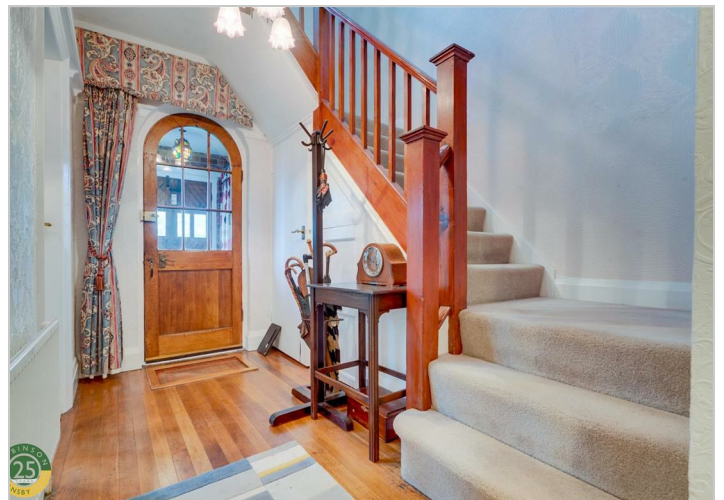
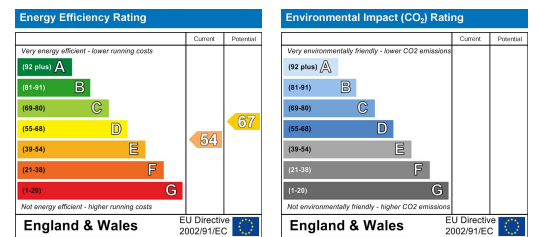
Floor Plan



Area Map



Energy Efficiency Graph



These particulars, whilst believed to be accurate are set out as a general outline only for guidance and do not constitute any part of an offer or contract. Intending purchasers should not rely on them as statements of representation of fact, but must satisfy themselves by inspection or otherwise as to their accuracy. No person in this firm's employment has the authority to make or give any representation or warranty in respect of the property.