



## THE OLD VICARAGE

Castle Hedingham, Halstead, CO9



# CLASSIC GRADE II-LISTED HOME SET IN BEAUTIFUL SURROUNDINGS

The Old Vicarage, a distinguished Grade II listed home, offers picturesque views of the castle and church, retaining elegant 18th-century symmetry and notable later enhancements by the Earl of Wilton.



8



5



4

EPC

E

Local Authority: Braintree District Council

Council Tax band: G

Tenure: Freehold

Guide Price: £1,750,000

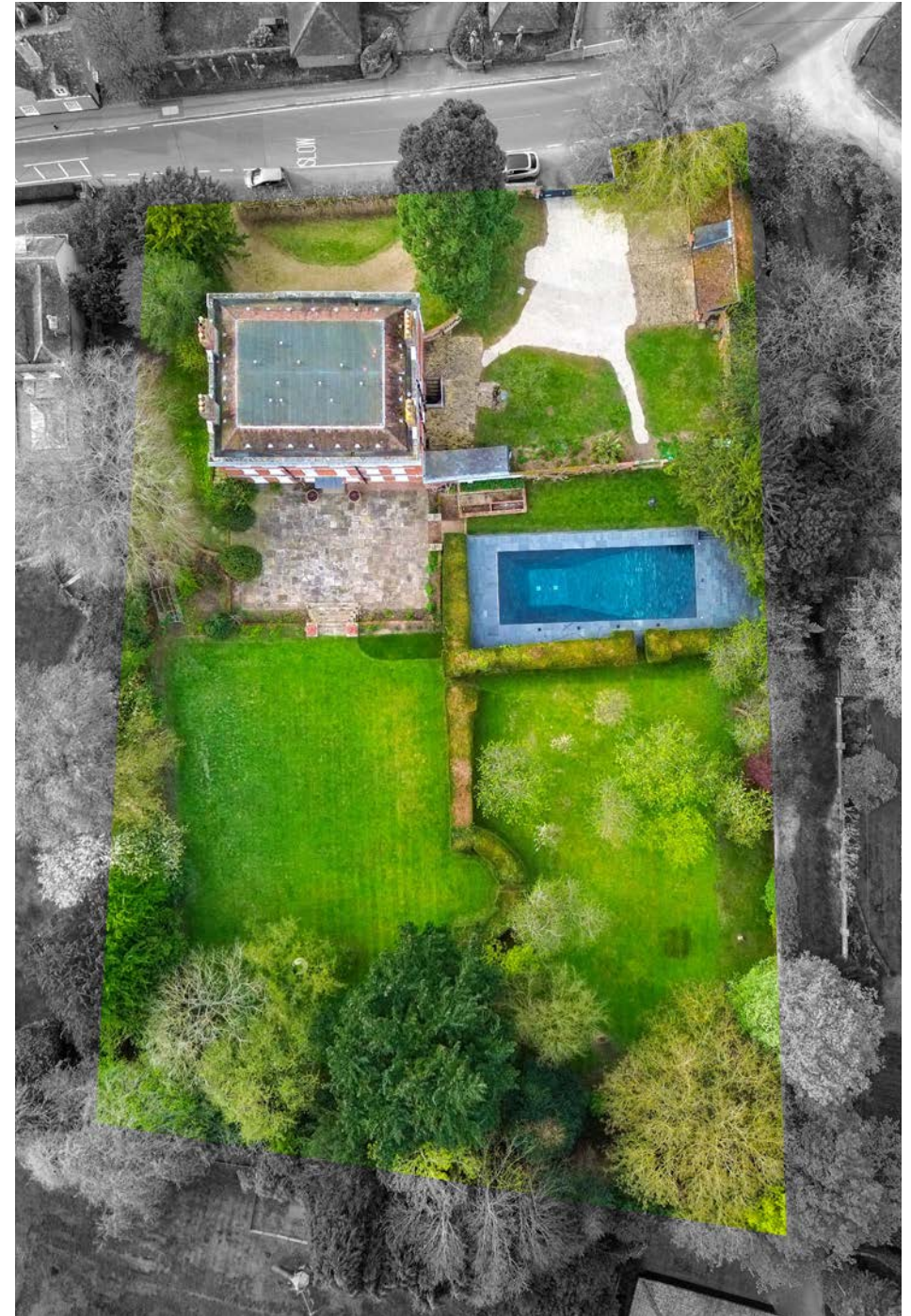


## THE LOCATION

The Old Vicarage is situated close to the heart of Castle Hedingham, one of Essex's most admired conservation villages and described by John Julius Norwich in *The Architecture of Southern England* as "ravishingly pretty." The village provides a charming selection of amenities, including local shops, welcoming pubs, a doctor's surgery, and a primary school.

Further shopping and services can be found in Sudbury, Halstead, and Colchester, while secondary education is available in nearby Sible Hedingham. Two independent schools are also located in the neighbouring village of Gosfield.

For commuters, excellent transport links include rail services to London Liverpool Street from Braintree or Witham, as well as convenient access to the A12 at Witham and the M11 via the A120 at Braintree.









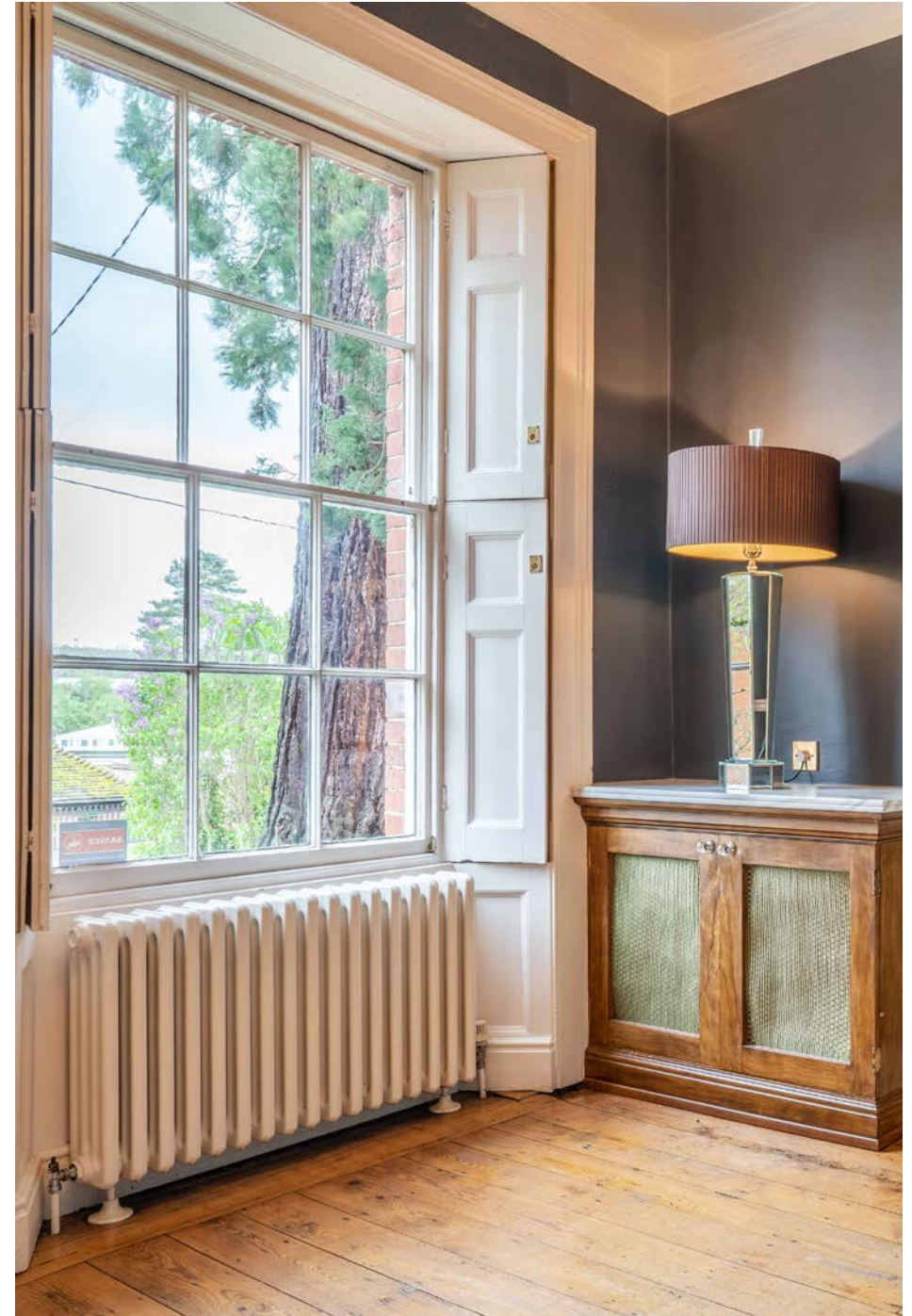


## THE PROPERTY

The Old Vicarage is a distinguished Grade II\* listed residence with picturesque views of the castle and church. Built in the early 18th century for a local wool merchant, it retains its remarkably intact symmetrical façades and striking central columned porch. Praised by Pevsner as “the best classical brick house,” it later passed to the Earl of Wilton, who oversaw significant 1990s renovations.

Inside, elegant, well-proportioned rooms centre on a grand reception hall once used for gatherings of local weavers. The ground floor features interconnected drawing and sitting rooms, a dining room opening to the kitchen/breakfast room, a cloakroom, a utility, a boot room, and vaulted cellars. The first floor offers four principal bedrooms, three en suite; the second floor provides four additional bedrooms and three further bathrooms.

A full-width basement includes a vaulted gym, billiard room, bar, and extensive storage.







## THE OUTSIDE

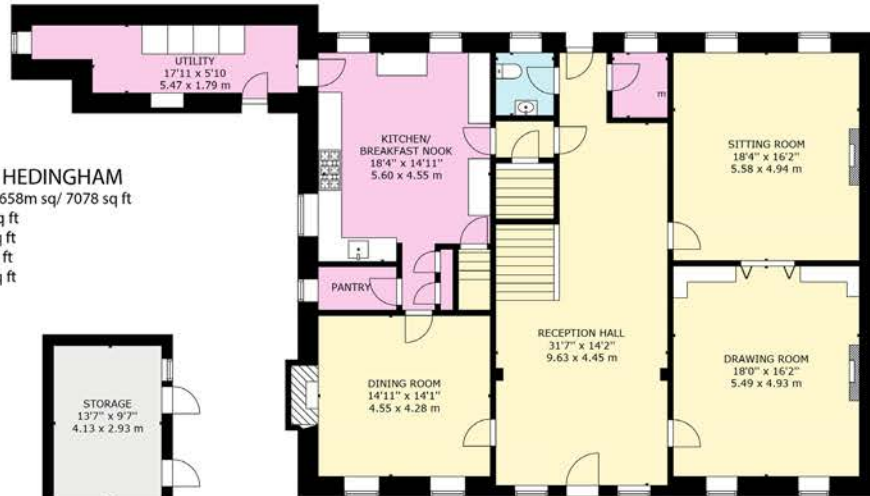
The Old Vicarage is approached by an elegant in-and-out carriage drive, lined with a tall pollarded hedge and bordered by sweeping lawns. A magnificent Wellingtonia and a graceful, curved brick wall create a charming sense of arrival. A secondary entrance with automated timber gates leads to a generous gravel parking area.

Within the grounds, a characterful brick-and-tile coach house offers a guest cottage and garage with ample storage. A gentle gravel path draws you past the contemporary heated pool to a peaceful seating spot in the former kitchen garden. Beyond, a soft grass walkway meanders through beautifully kept lawns, shaded by mature cherry, lime, and copper beech trees, before opening into an inner garden and orchard filled with pear, plum, quince, and apple trees, an idyllic place to wander and unwind.

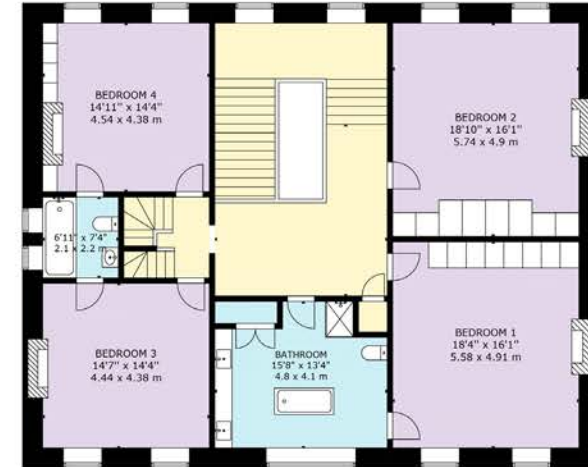




**THE OLD VICARAGE, CASTLE HEDINGHAM**  
 Approximate Internal Area Main House: 658m sq/ 7078 sq ft  
 Cottage: 53m sq/ 566 sq ft  
 Garage: 21m sq/ 224 sq ft  
 Stores: 22m sq/ 234 sq ft  
 Total: 753m sq/ 8102 sq ft



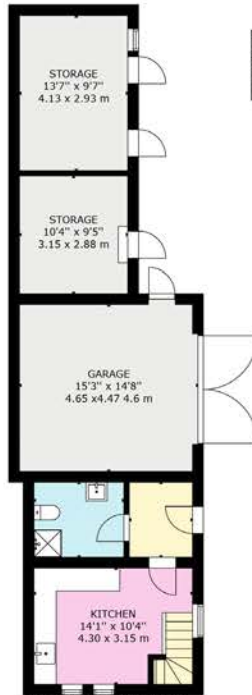
GROUND FLOOR



FIRST FLOOR



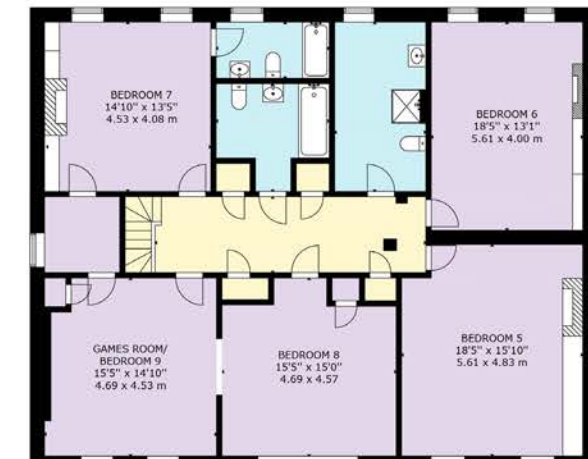
COTTAGE FIRST FLOOR



COTTAGE GROUND FLOOR



BASEMENT



SECOND FLOOR

**GROSS INTERNAL AREA**  
 TOTAL: 713 m<sup>2</sup>/7,677 sq.ft  
 BASEMENT: 167 m<sup>2</sup>/1,793 sq.ft, GROUND FLOOR: 190 m<sup>2</sup>/2,050 sq.ft  
 FIRST FLOOR: 177 m<sup>2</sup>/1,905 sq.ft, SECOND FLOOR: 179 m<sup>2</sup>/1,929 sq.ft  
 EXCLUDED AREAS: COTTAGE FIRST FLOOR: 46 m<sup>2</sup>/500 sq.ft, STORAGE: 23 m<sup>2</sup>/248 sq.ft  
 GARAGE: 22 m<sup>2</sup>/239 sq.ft, COTTAGE GROUND FLOOR: 25 m<sup>2</sup>/265 sq.ft  
 SIZE AND DIMENSIONS ARE APPROXIMATE, ACTUAL MAY VARY

This plan is for layout guidance only. Not drawn to scale unless stated. Windows and door openings are approximate. Whilst every care is taken in the preparation of this plan, please check all dimensions, shapes and compass bearings before making any decisions reliant upon them. (ID767266)

We would be delighted  
to tell you more.

**Georgie Veale**  
01394 334570  
georgie.veale@knightfrank.com

**Knight Frank Woodbridge**  
The Barn, Ufford Road, Woodbridge  
IP12 2QE

**James Harmer**  
01394 334571  
james.harmer@knightfrank.com

[knightfrank.co.uk](https://www.knightfrank.co.uk)

Your partners in property

1. Particulars: These particulars are not an offer or contract, nor part of one. You should not rely on statements given by KF East Anglia Ltd in the particulars, by word of mouth or in writing ("information") as being factually accurate about the property, its condition or its value. Neither KF East Anglia Ltd nor any joint agent has any authority to make any representations about the property. Accordingly, any information given is entirely without responsibility on the part of KF East Anglia Ltd. 2. Material Information: Please note that the material information is provided to KF East Anglia Ltd by third parties and is provided here as a guide only. While KF East Anglia Ltd has taken steps to verify this information, we advise you to confirm the details of any such material information before submitting any offer. If we are informed of changes to this information by the seller or any third party, we will use reasonable endeavours to update it as soon as practicable. 3. Photos, Videos, etc. The photographs, property videos and virtual viewings, etc., show only certain parts of the property as they appeared at the time they were taken. Areas, measurements and distances given are approximate only. 4. Regulations etc: Any reference to alterations to or use of any part of the property does not mean that any necessary planning, building regulations or other consent has been obtained. A buyer must determine, by inspection or otherwise, that these matters have been properly addressed and that all information is correct. 5. Fixtures and fittings: A list of the fitted carpets, curtains, light fittings, and other items fixed to the property which are included in the sale (or may be available by separate negotiation) will be provided by the Seller's Solicitors. 6. VAT: The VAT position relating to the property may change without notice. 7. To find out how we process Personal Data, please refer to our Group Privacy Statement and other notices at <https://www.knightfrank.com/legals/privacy-statement>.

Particulars dated Mar 2026. Photographs and videos dated Apr 2024. All information is correct at the time of going to print: KF East Anglia Ltd, a limited liability company registered in England with registered number 16443611. Our registered office is at The Barn, Hempland Barn, Ufford Road, Woodbridge, Suffolk, IP12 2QE. KF East Anglia Ltd is an independently owned member of the Knight Frank Network operating under licence from Knight Frank LLP. Each entity or practice in the Knight Frank global network is a distinct and separate legal entity. No Knight Frank entity acts as agent for, or has any authority to represent, bind or obligate in any way, any other Knight Frank entity. If you do not want us to contact you further about our services, please get in touch by calling 020 3544 0692, emailing [marketing.help@knightfrank.com](mailto:marketing.help@knightfrank.com), or posting to our UK Residential Marketing Manager at our registered office (above), providing your name and address.