



6 Freeston Terrace, Telford, TF2 9HD
Offers In The Region Of £210,000

With its combination of space, practicality, and location, this semi-detached property on Freeston Terrace presents a wonderful opportunity for anyone looking to settle in the Telford area. Do not miss the chance to make this charming property your new home.

Front Exterior

The brick façade and porch entrance offer classic charm, while the driveway and carport provide ample off-street parking. A neat, lawn bordered with a hedgerow for privacy add a touch of greenery to the appearance to the property.

Hallway

A charming entrance hallway leading to the living room and stairs up to the first-floor landing space.

Living Room 15'1" x 12'3" (4.60 m x 3.75 m)

This welcoming living room offers a cosy atmosphere with its wood-burning stove set against a tiled hearth and a wooden mantelpiece. Soft grey carpeting and muted blue tones on the walls provide a calm and inviting space, complemented by a large window that fills the room with natural light and a storage cupboard for convenience. The room accommodates ample seating, perfect for relaxing or entertaining.

Kitchen Diner 15'2" x 9'3" (4.63 m x 2.82 m)

The kitchen is finished in a striking teal shade that creates a vibrant backdrop to the modern, gloss, cream cabinetry. Equipped with integrated appliances including a gas hob and oven, the room boasts plentiful surface space and under-counter plumbing for a washing machine and dishwasher. The room benefits from lots of natural light from two windows and a rear access door, and a useful storage cupboard. The size of the room allows space for a dining table and chairs, creating a sociable environment for casual dining and family meals.

Master Bedroom 10'8" x 9'8" (3.25 m x 2.94 m)

This generous master bedroom offers a restful retreat with soft grey carpeting and tasteful decoration. A large window allows natural light to fill the space and provides views over the rear garden. The room comfortably accommodates a double bed with further bedside storage, and the high ceiling really opens up the room.

Bedroom Two 8'0" x 7'8" (2.45 m x 2.83 m)

A further double bedroom with neutral grey decor and a feature fireplace for a touch of original character. A large front-facing window and high ceiling brightens the room.

Bedroom Three 10'4" x 10'11" (3.15 m x 3.32 m)

This third bedroom is a bright and practical space with grey wood-effect flooring and a window looking out to the garden. Currently used as a home office, this room offers a variety of uses such as a dressing room, office or third bedroom.

Bathroom

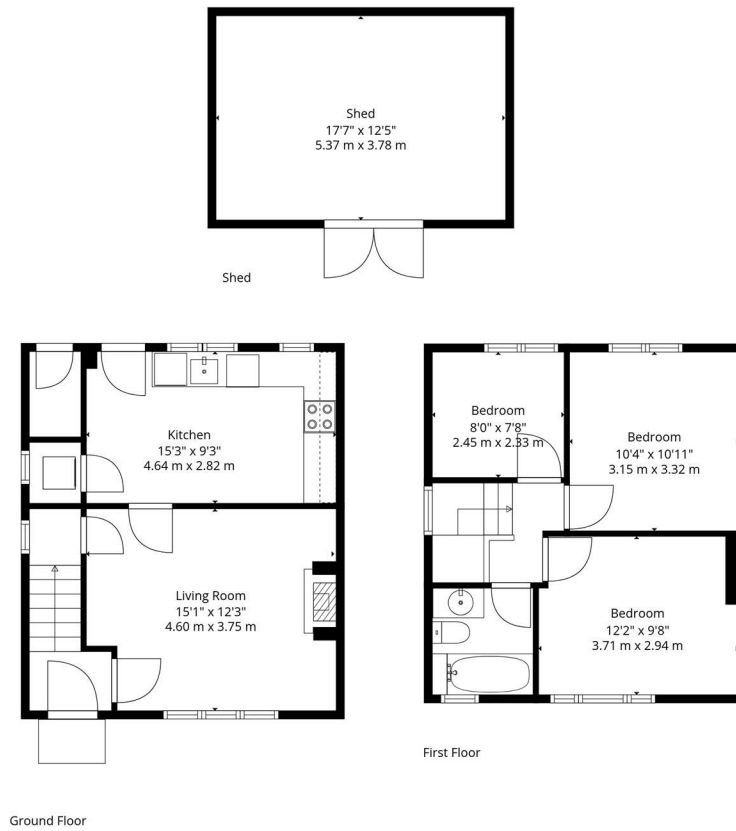
The bathroom is modern and well-appointed with a white fitted bathtub and overhead shower, a circular

basin sink set on a wood-effect vanity unit, and a WC. The walls feature cream tiling and a contrasting dark blue painted section, and a frosted window provides natural light while maintaining privacy.

Rear Garden

The rear garden extends generously with a lawn bordered by mature trees and fencing, offering privacy and a peaceful feel. A decked seating area provides an ideal spot for outdoor entertaining or relaxing, complemented by a large garden store at the far end fitted with electricity. The garden is well maintained and spacious enough for children's play equipment and those who enjoy gardening.

Floor Plan

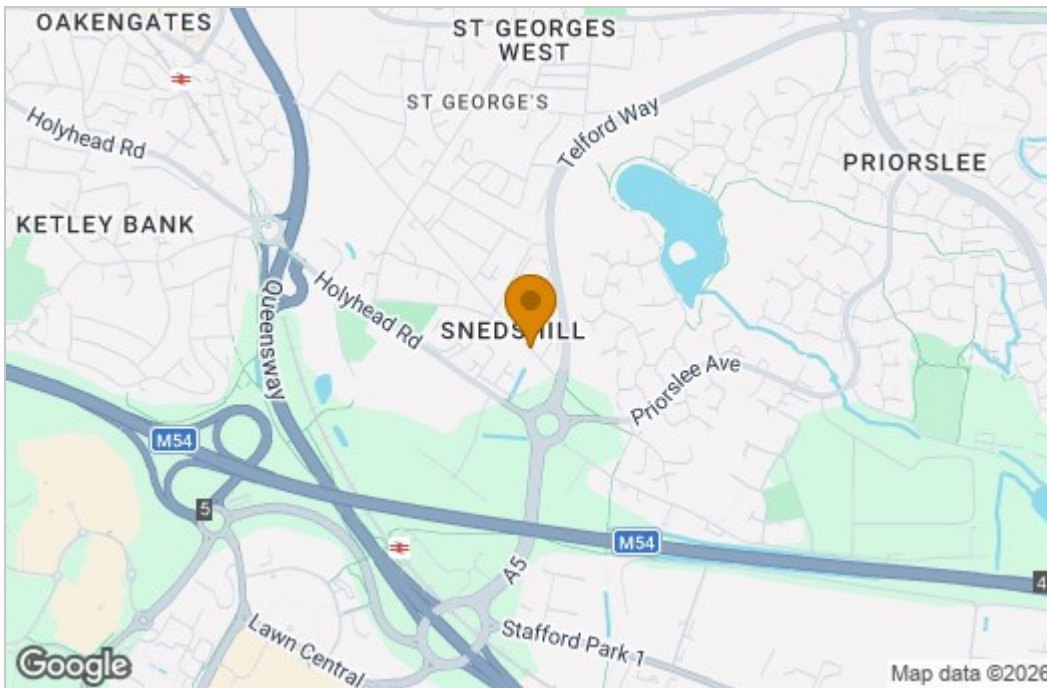


Total: 799 sq. Ft, 74 m²
Ground Floor: 409 sq. Ft, 38 M², Shed: 0 sq. Ft, 0 M², First Floor: 390 sq. Ft, 36 m²
Excluded Areas: Undefined: 18 sq. Ft, 2 M², Shed: 219 sq. Ft, 20 M², Walls: 112 sq. Ft, 11 m²

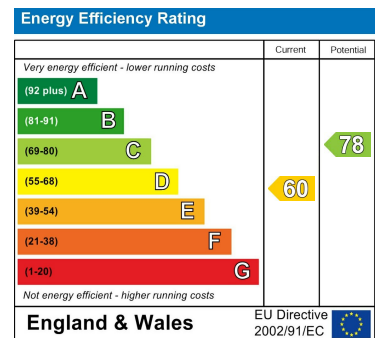
Measurements Deemed Highly Accurate But Not 100%. Agents Assist Are Not Liable And Do Not Take Any Responsibility For Any Errors, Omissions Or Mistakes In The Floorplan. Please Carry Out Your Own Measurements Before Making Any Decisions Based On Them.



Area Map



Energy Efficiency Graph



These particulars, whilst believed to be accurate are set out as a general outline only for guidance and do not constitute any part of an offer or contract. Intending purchasers should not rely on them as statements of representation of fact, but must satisfy themselves by inspection or otherwise as to their accuracy. No person in this firm's employment has the authority to make or give any representation or warranty in respect of the property.