



3 Parton Mews Parton Road, Churchdown, Gloucester, GL3 2AH

£800 PCM

TO LET



- Available from 9/6/2026
- Appliances Included
- Ground Floor
- One Bedroom
- Allocated Parking
- Council Tax Band A
- EPC C
- Double Glazing
- Electric Heating
- Recently renovated

THE PROPERTY

Chosen Estate Agents are delighted to present this beautifully updated one-bedroom ground-floor maisonette, set within a highly desirable and peaceful development on Parton Road, Churchdown.

The property has recently been refreshed throughout, featuring new carpets, a newly fitted kitchen, and fresh décor.

The accommodation includes a bright lounge/diner, a modern kitchen complete with cooker, washing machine and fridge, a double bedroom with built-in wardrobes, and a well-appointed bathroom with bath, overhead shower, and heated towel rail.

Additional benefits include allocated off-road parking, a communal bin store, and well-kept communal green areas.

Sorry, no pets.

Holding Deposit: £184.00 based on 1 weeks' rent of asking price

Security Deposit: £923.00 based on 5 weeks' rent of asking price

Council Tax band: A

Local Authority: Tewkesbury Borough Council

EPC Band: C

Electricity supply: Mains

Water supply: Mains

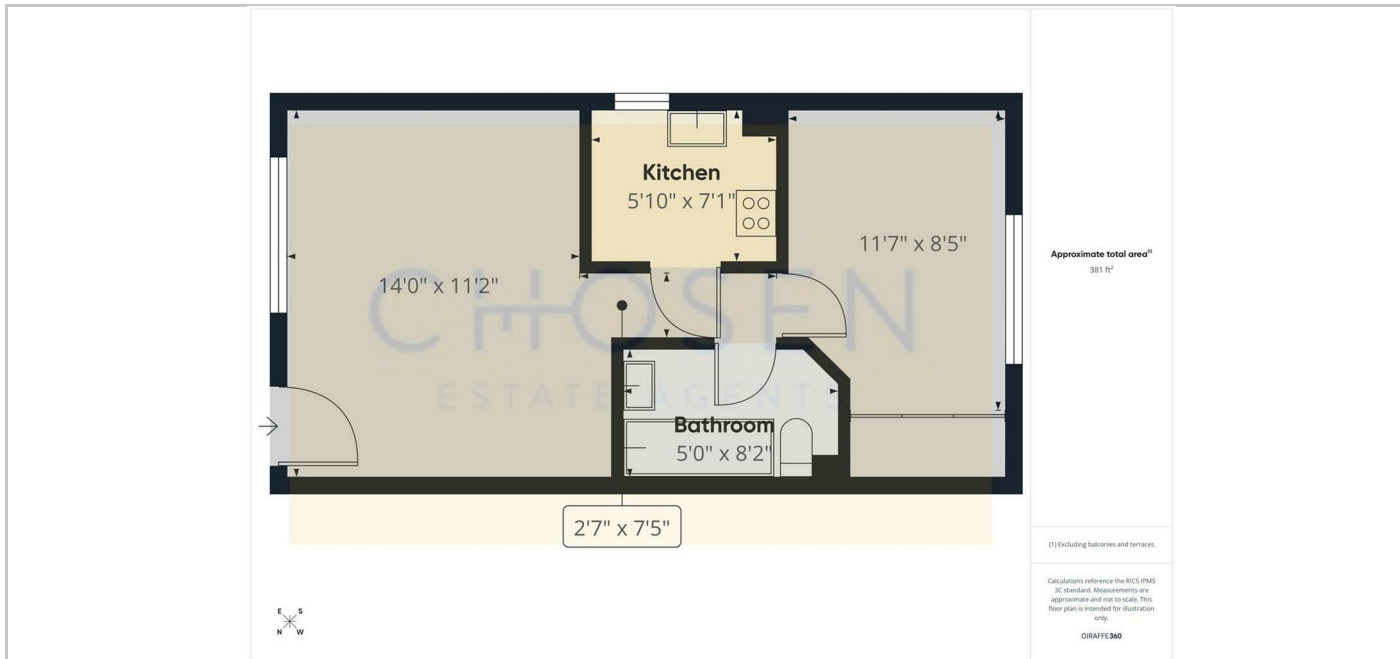
Sewerage: Mains

Heating: Electric Heating

Mobile phone coverage: i.e EE, Vodaphone, Three, O2

If satisfactory references are not obtained or you withdraw your application any financial loss to Chosen Estate Agents or the Landlord will be deducted from your holding deposit. If you or your guarantor provides information that is inaccurate, false, incomplete, or adverse credit not being disclosed then we may retain your holding deposit and reject your application.

SITUATION



Directions

2 Church Road, Churchdown, Gloucestershire, GL3 2ER

Tel: 01452 857421 Email: info@chosenestateagents.co.uk www.chosenestateagents.co.uk