



Portobello Road, W11

£923 Per week

Located in the heart of the vibrant and iconic Portobello Road, this modern maisonette offers an exceptional blend of contemporary style and period charm. The property features three generously sized double bedrooms, perfect for comfortable living or sharing. High ceilings throughout create a bright and airy ambiance, complemented by beautiful wooden floors that provide a sleek and modern finish.

Perfectly positioned on Notting Hill's iconic Portobello Road, you'll find yourself surrounded by a vibrant mix of fashionable bars, renowned restaurants, and eclectic boutiques. The nearby Westbourne Grove adds to the appeal, offering stylish pavement cafés and designer shops in one of London's most desirable neighbourhoods. A truly rare opportunity to live in the heart of one of the city's most sought-after locations.

Features

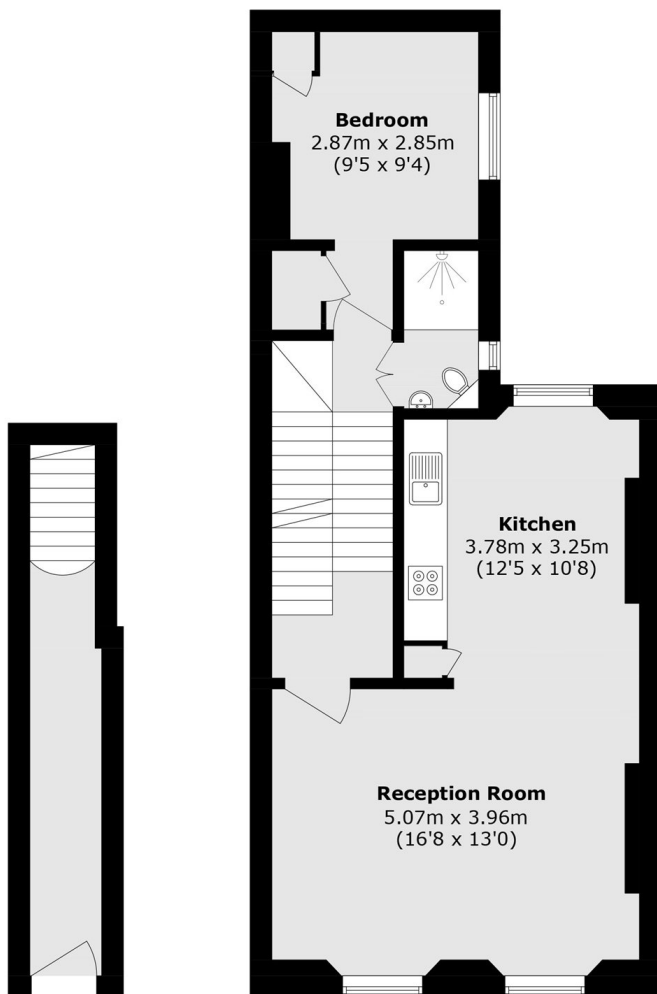
- Amazing 3 bedroom
- Apartment
- Open Plan
- Maisonette
- Portobello Markets
- Ladbroke Grove Station
- Bright And Spacious
- Ample Storage
- Wooden Floors



Portobello Road, W11

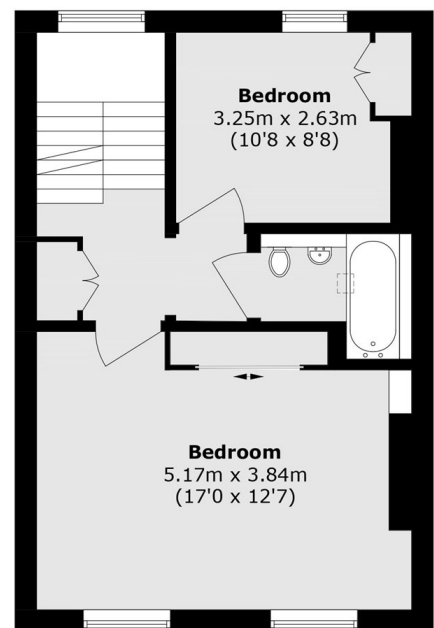


Portobello Road, London, W11



Ground Floor

First Floor



Second Floor

Total area (approx.): 102.7 sq. m (1105.4 sq. ft)