



Casson Square, London SE1

Price £715 per week - Furnished







Description

JLL are delighted to present a fully furnished studio suite in 8 Casson Square, a sought-after development moments from Waterloo Station, SE1. Casson Square boasts top of the range facilities including, swimming pool, gym, residents lounge and 24-hour concierge.

This spacious studio apartment is situated on the 11th floor and comprises a well sized living room with a fully fitted kitchen to include Miele and Siemens appliances, partitioned sleeping area with large fitted wardrobes, contemporary shower room, wood flooring, Easterly views towards The Shard and excellent storage space. The property has a high specification throughout featuring comfort cooling, underfloor heating and smart home technology.

8 Casson Square is in the heart of Southbank and on the doorstep of Waterloo Station (0.2 miles) with access to over ground routes, Bakerloo, Waterloo and City, Jubilee and Northern lines which provide easy access to Central London. The development benefits from luxury amenities which include an on-site gym, swimming pool with spa, exclusive resident's lounge and 24-hour concierge.

We understand that cooling / heating is delivered via a communal system for which separate charges apply.

Council tax band: F. Rent is payable on a monthly basis, and you may be required to pay more than a month's rent in advance for tenancies with annual rents exceeding £100,000. You will be required to pay a 1 week holding deposit following a successful offer. Tenancies with annual rents up to £50,000 will require a 5 weeks' security deposit, while those exceeding this threshold will require a 6 weeks' deposit. Utility bills, council tax, telephone line and broadband are not included in the rent. As well as paying the rent, you may also be required to make some additional permitted payments. If your tenancy does not qualify as an APT, additional fees may apply. Please visit jll.co.uk/fees for details of fees that may be payable when renting a property. To check broadband and mobile phone coverage please visit Ofcom here ofcom.org.uk/phones-telecoms-and-internet/advice-for-consumers/advice/ofcom-checker

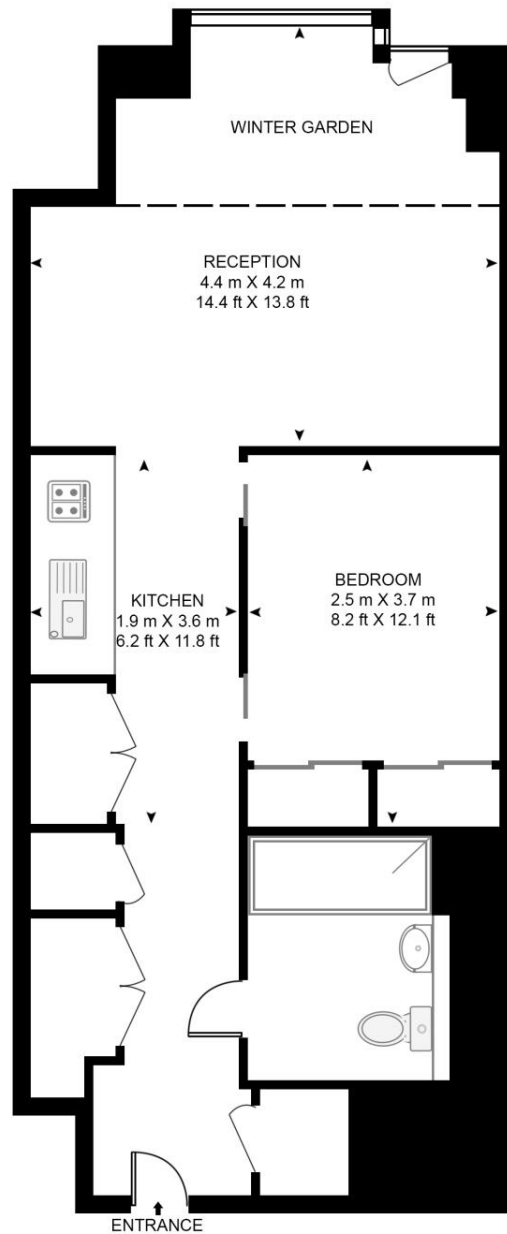
- Studio
- 1 Bathroom
- 11th Floor
- Winter Garden
- Easterly views towards The Shard
- Luxury fitted kitchen with Miele appliances
- 24 hour concierge
- Approx. 484 sq ft (45 sq m)
- 0.2 mile from Waterloo Station
- Luxury residents facilities

Floorplan

484 sq ft | 45 sq m

8 CASSON SQUARE, LONDON, SE1 7GU

APPROXIMATE GROSS INTERNAL FLOOR AREA 484 SQ.FT (45 SQ.M)



ELEVENTH FLOOR

HDVA

This floor plan has been defined by the RICS Code of Measurement. This floor plan and all others are for approximate representative purposes only and upon usage is agreed to as such by the client.

WWW: hdvirtualart.com | TEL: 0203.974.1567 | EMAIL: info@hdvirtualart.com

City
25 Walbrook The Walbrook
Building,
London EC4N 8AF
+4420 7337 4000

Urban living, your way.

jll.co.uk/residential

© 2019 Jones Lang LaSalle IP, Inc. All rights reserved. All information contained herein is from sources deemed reliable; however, no representation or warranty is made to the accuracy thereof.

