

**jordan fishwick**

4 BUCK LANE SALE M33 5WE  
Per Month £1,595 Per Month

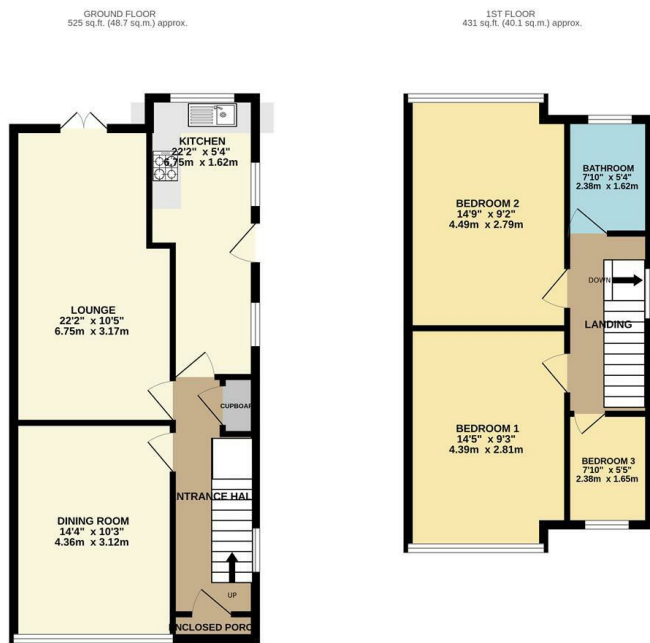
## 4 BUCK LANE SALE M33 5WE

**\*\*AVAILABLE NOW\*\***

Nestled in the charming area of Buck Lane, Sale, this delightful semi-detached house offers a perfect blend of comfort and convenience. With three well-proportioned bedrooms, this property is ideal for families or those seeking extra space. The two inviting reception rooms provide ample opportunity for relaxation and entertaining, making it easy to host friends and family.

The layout of the home is both practical and welcoming, ensuring that every corner is utilised effectively. The single bathroom is thoughtfully designed, catering to the needs of the household.

Situated in a desirable location, this property benefits from easy access to local amenities, schools, and parks, making it a wonderful place to call home. This semi-detached house on Buck Lane presents an excellent opportunity. Do not miss the chance to view this lovely property and envision your future in this welcoming community.



TOTAL FLOOR AREA: 956 sq.ft. (88.0 sq.m.) approx.  
 Measurements are approximate. Not to scale. All other properties only.  
 Made with Metaphor 2018



- AVAILABLE NOW
- 3 spacious bedrooms
- 2 cosy reception rooms
- 1 modern bathroom
- Semi-detached house
- Close to local amenities
- Near public transport links
- Council Tax Band D
- EPC Rating D
- Viewing highly recommended

Energy Efficiency Rating		Environmental Impact (CO <sub>2</sub> ) Rating			
Very energy efficient - lower running costs	Current	Potential	Very environmentally friendly - lower CO <sub>2</sub> emissions	Current	Potential
(92 plus) A			(92 plus) A		
(81-91) B			(81-91) B		
(69-80) C			(69-80) C		
(55-68) D		68	(55-68) D		
(39-54) E			(39-54) E		
(21-38) F			(21-38) F		
(1-20) G			(1-20) G		
Not energy efficient - higher running costs		Not environmentally friendly - higher CO <sub>2</sub> emissions			
England & Wales		EU Directive 2002/91/EC		England & Wales	