



ORMELEY ROAD, SW12

£600,000

- Two Double Bedrooms
- Kitchen Diner
- Separate Reception Room
- Central Balham Location
- Period Features
- Energy Rating: D





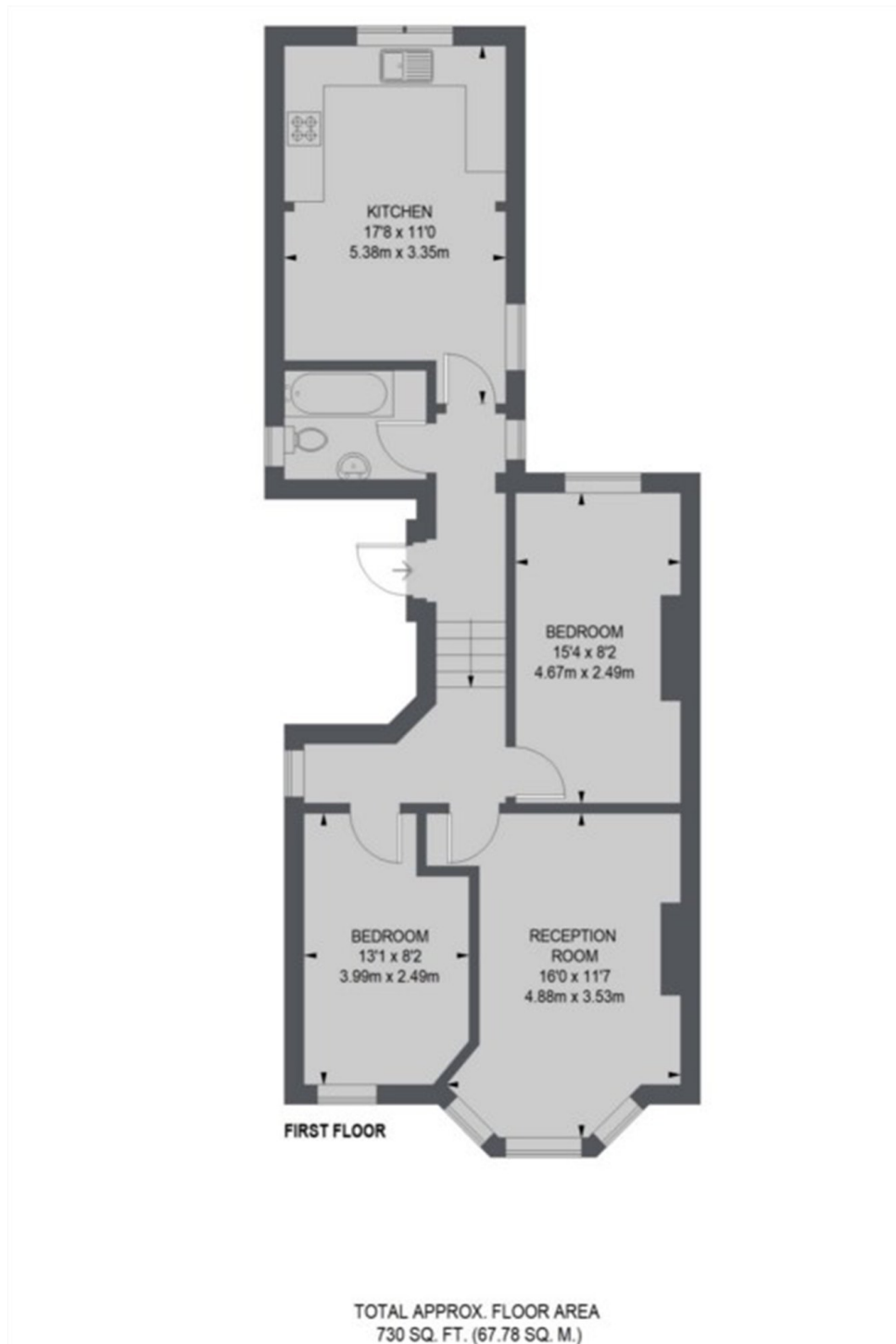
## ABOUT THE HOME

A well presented and bright two bedroom split level Victorian conversion. This property is ideally located in the heart of Balham and benefits from a large kitchen/diner, separate living space and two double bedrooms. This property blends character and modern appeal with period features and a large bay window.

Ormeley Road is a popular road located in central Balham. Balham Mainline and Underground stations are within easy reach providing excellent transport links into the city. The extensive array of local amenities paired with the close proximity to the lovely green spaces such as Tooting bec Common are ideal for modern living.





**JACKSONS BALHAM**

8-11 Balham Station Road,  
London, SW12 9SG  
Sales: 020 8675 6555  
Lettings: 020 8675 6565

Energy Rating: We aim to make our particulars both accurate and reliable. However they are not guaranteed; nor do they form part of an offer or contract. If you require clarification on any points then please contact us, especially if you're traveling some distance to view. Please note that appliances and heating systems have not been tested and therefore no warranties can be given as to their good working order.