



Old Kent Road, SE1

£475,000

A highly attractive, modern apartment, set on the (5th) top floor, with a spacious open plan living room and a high spec kitchen, a private west-facing balcony with far-reaching views, two double bedrooms and two bathrooms, plus access to a very large communal roof terrace and benefitting from a Share of Freehold.

Howson Court occupies a highly convenient location on Marlborough Grove, tucked just off the Old Kent Road and within easy reach of some of South London's main attractions. Bermondsey Street, Borough Market, London Bridge and Elephant & Castle are all readily accessible, offering an exceptional mix of restaurants, cafés, cultural attractions and everyday amenities.

Features

- Share of Freehold
- Open Plan Living
- Private West-Facing Balcony
- Communal Roof Terrace
- Fantastic Local Amenities
- Great Transport Links
- Close to Burgess Park



Old Kent Road, SE1

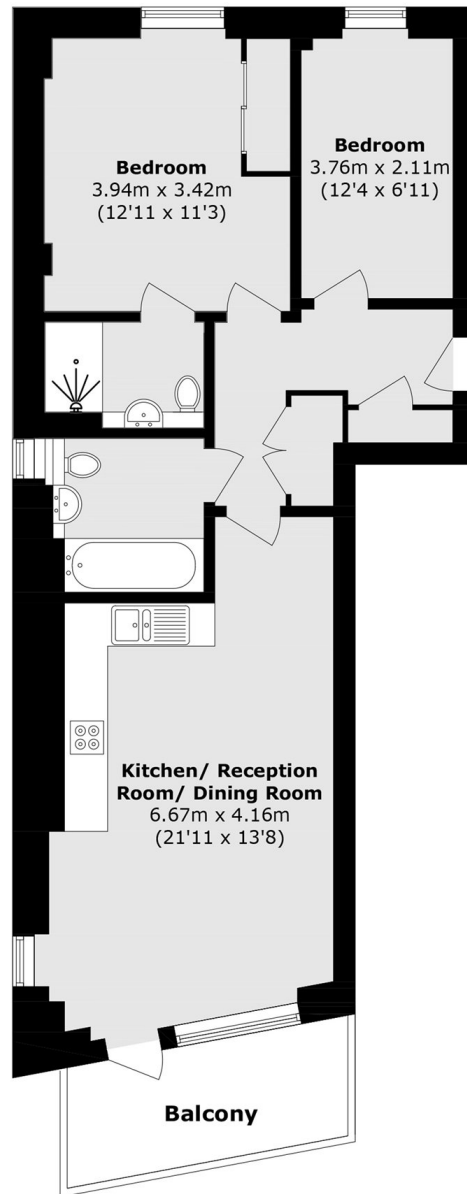
Occupying an enviable top-floor position within this contemporary development, this immaculate two-bedroom apartment offers stylish accommodation with a strong sense of light and space. The heart of the home is a generous open-plan living area, seamlessly incorporating a sleek, modern kitchen with quality integrated appliances and ample room for dining and entertaining.

A private west-facing balcony extends the living space outdoors and enjoys an open outlook, providing the perfect spot to relax and enjoy the afternoon and evening sun. Both bedrooms are comfortable doubles, with the principal bedroom benefiting from its own en-suite shower room, while a separate family bathroom serves the remainder of the apartment.

The thoughtful layout, modern finishes and excellent natural light create a welcoming and practical home, equally suited to professionals, couples or those seeking a well-connected London base. Residents also have access to a substantial communal roof terrace, offering a rare additional amenity and far-reaching views across the London skyline.



Old Kent Road,
London, SE1



Total area (approx.): 67.2 sq. m (723.3 sq. ft)
Balcony area (approx.): 6.5 sq. m (69.9 sq. ft)