

Flat 23, 51 Manor Court, Manor Drive, Chorlton, Manchester, M21 7JU



JP&Brimelow
ESTATE AGENTS

Offers In The Region Of £130,000

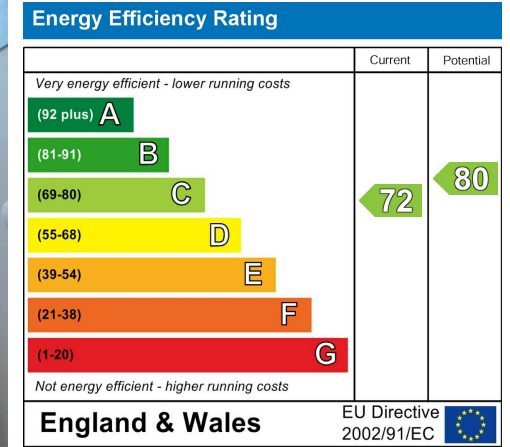


VIDEO TOUR AVAILABLE A well-kept & spacious, TWO BEDROOM, retirement apartment. situated on the first floor within this sought-after purpose-built development for the over 55's here in Chorlton off Darley Avenue. Within walking distance to Chorlton Water Park, Barlow Moor Road transport links on your doorstep into Manchester City Centre which will provide easy access to a range of amenities including theatres, museums, art galleries and all the excitement of city life and Manchester International Airport for easy national and international flights. The well-planned apartment comprises of a communal entrance hall with stairs and a lift leading to all floors. A private entrance hallway with useful storage cupboard, two double bedrooms both with built in wardrobes, a white three-piece bathroom suite, a fitted kitchen, and a good-sized lounge which benefits from a balcony. The property benefits from a private balcony, warmed by electric heating, communal parking and attractive communal lawned gardens. Ideal for those looking to downsize without compromising on location. OFFERED WITH NO ONWARD CHAIN. Early viewing is highly recommended.



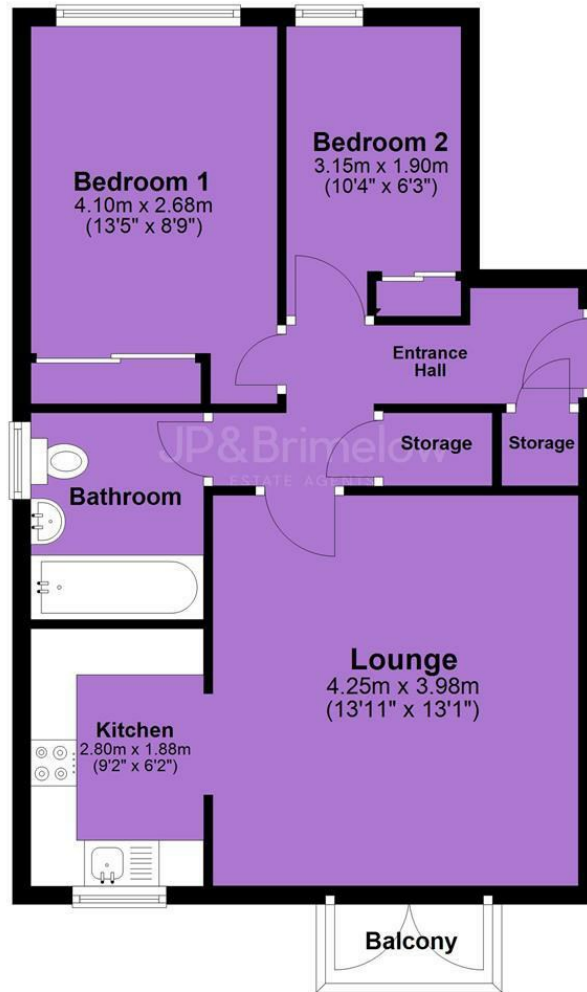


EPC Chart



Tenure: **Leasehold** Council Tax Band: **A**

First Floor



JP & Brimelow Estate Agents Ltd
430 Barlow Moor Road, Manchester, M21 8AD
Tel: 0161 8822233
E: sales@jpbrimelow.co.uk www.jpandbrimelow.co.uk



JP & Brimelow
ESTATE AGENTS

NOTICE: JP & Brimelow Estate Agents Ltd for themselves and for the vendors or lessors of this property whose agents they are give notice that:

- the particulars are set out as a general outline only for the guidance of intending purchasers or lessees, and do not constitute, nor constitute part of, an offer or contract;
- all descriptions, dimensions, references to the condition and necessary permissions for use and occupation, and other details are given in good faith and are believed to be correct but any intending purchasers or tenants should not rely on them as statements or representations of fact but must satisfy themselves by inspection or otherwise as to the correctness of each of them;
- no person in the employment of JP & Brimelow Estate Agents Ltd has any authority to make or give any representation or warranty whatever in relation to this property.

jpandbrimelowstateagents

@jpandbrimelow