



**Bridges Court Road, SW11**  
**£360,000**



A beautifully presented, one bedroom apartment set within this exclusive riverside development with private balcony.

The bright living room has space for dining and is open plan onto stylish, modern kitchen. An allocated parking space is included in the sale.

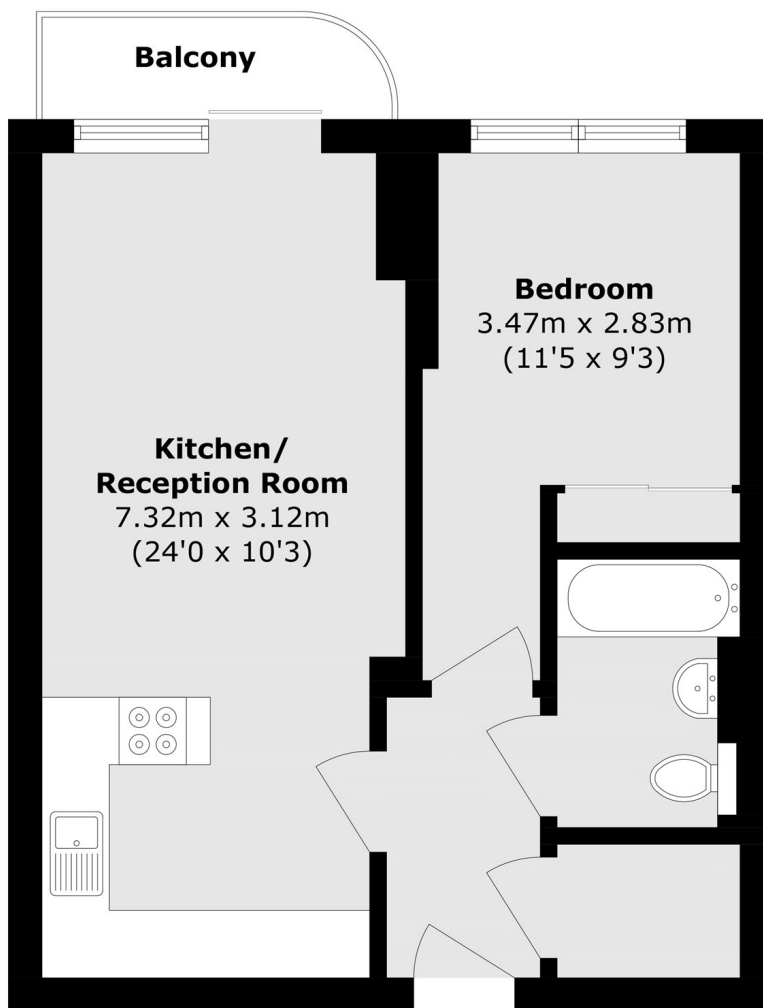
### Features

- Beautiful Apartment
- Private Balcony
- Secure Parking
- No Chain
- Excellent Concierge
- Communal Gardens

Bridges Court Road runs parallel to The Thames at Battersea.



## Bridges Court Road, London, SW11



Total area (approx.): 45.7 sq. m (491.9 sq. ft)  
Balcony area (approx.): 2.7 sq. m (29.1 sq. ft)

### Contact

To arrange a viewing call our office on the number below or visit our website.



Energy Rating: B. We aim to make our particulars both accurate and reliable. However they are not guaranteed; nor do they form part of an offer or contract. If you require clarification on any points then please contact us, especially if you're traveling some distance to view. Please note that appliances and heating systems have not been tested and therefore no warranties can be given as to their good working order.