



17 Skylark Fields, Nuneaton, CV10 0GE
£240,000

ENTRANCE HALL

Stairs to first floor, tiled flooring

LIVING ROOM 16'8" x 11'9" (5.1 x 3.6)

Double glazed window to front aspect, lvt flooring

CLOAKROOM WC

Low level wc, wash hand basin, tiled splashbacks

KITCHEN DINING ROOM 10'2" x 8'10" (3.1 x 2.7)

Double glazed doors to rear gardens, fitted with matching floor and wall units with work surfaces over, integrated and free standing appliances, tiled flooring, dining space

FIRST FLOOR LANDING

Loft access, carpet flooring

BEDROOM 11'1" x 10'5" (3.4 x 3.2)

Double glazed window, carpet flooring

BEDROOM 6'10" x 6'2" (2.1 x 1.9)

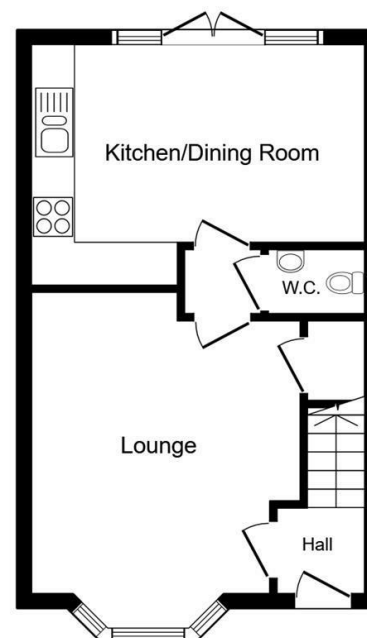
Double glazed window, carpet flooring

BATHROOM

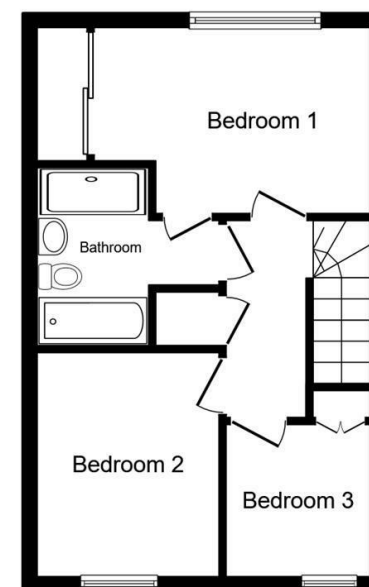
Matching white bathroom suite with tiled surrounds

OUTSIDE

Fully enclosed rear gardens, large patio area, gated rear access. Double driveway to the rear of the property with access to the garden.



Ground Floor



First Floor