



## Longstone Avenue, NW10

£438 Per week

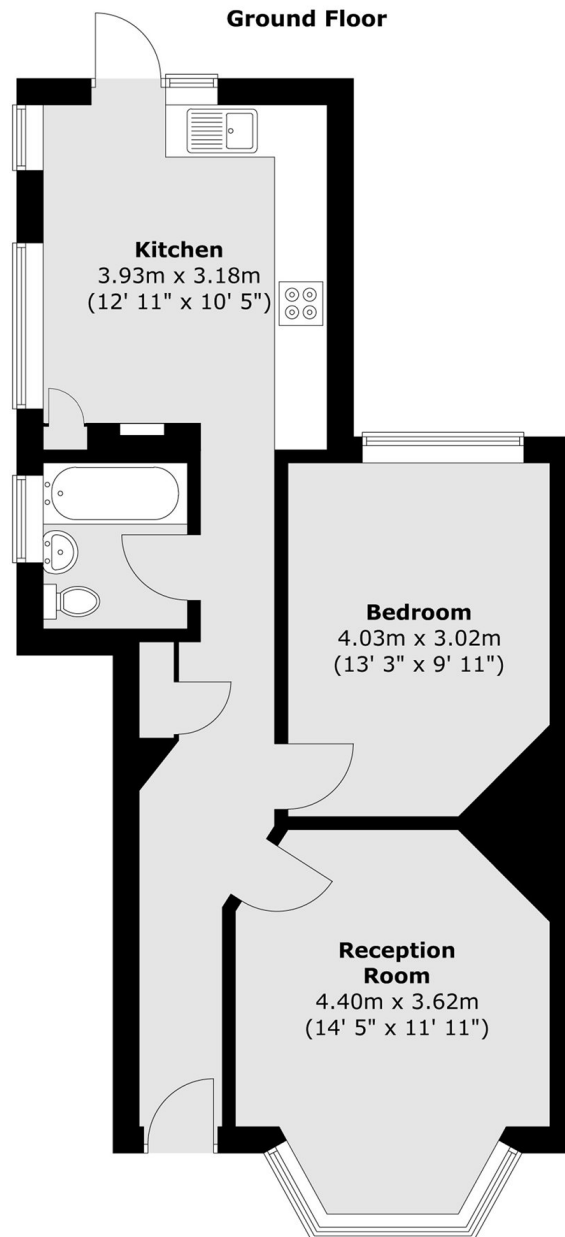
A contemporary one-bedroom apartment featuring a spacious reception area with high ceilings and access to a private garden. The property includes a separate living room and kitchen, complemented by wooden flooring throughout. Ideally suited to a professional couple or a single occupant.

The flat is located opposite Roundwood Park and within easy reach of Willesden Junction (Overground) and Harlesden (Bakerloo).

### Features

- One Bedroom
- Modern
- Garden
- Wooden Floors
- Separate Kitchen
- Large Windows

# Longstone Avenue, London, NW10



Total area (approx.) : 53.5 sq. m (576 sq. ft)