



SIMPLE LIFE



SIMPLE LIFE



First  
month's  
rent free!!

\*Offer available on selected  
plots and for a limited  
time only

## Fishmoor Drive, Blackburn, BB2

£1,125 PCM

Simple Life Homes are thrilled to be delivering a spectacular collection of two, three and four bedroom homes at Brookfield Vale. Located in Blackburn, Brookfield Vale is situated on top of the largest hills in the area, offering desirable views of the Pennines and a good mix of urban & rural living.

The welcoming central hallway of the Grantham sits in between the living room and the kitchen. A house designed with you in mind, the spacious lounge provides the perfect area to relax, whilst the dining/kitchen area provides a great place to spend time and entertain with its French windows opening on to the garden. A WC is conveniently situated off the hallway, completing the downstairs.

Upstairs, the house has a large master bedroom with fitted, mirrored wardrobes, and a further two bedrooms. A stylish family bathroom with a separate bath and shower provides the best of both worlds, whilst a storeroom on the landing provides a space to store bits and pieces.

This development is just one mile away from the town centre, providing plenty of options for shopping and leisure. For those who love to shop, 'The Mall' in Blackburn town centre has numerous high street shops and restaurants. Other local facilities include Tesco Superstore, Lidl, Tenpin Bowling, Planet Ice Arena and Blackburn Rovers.

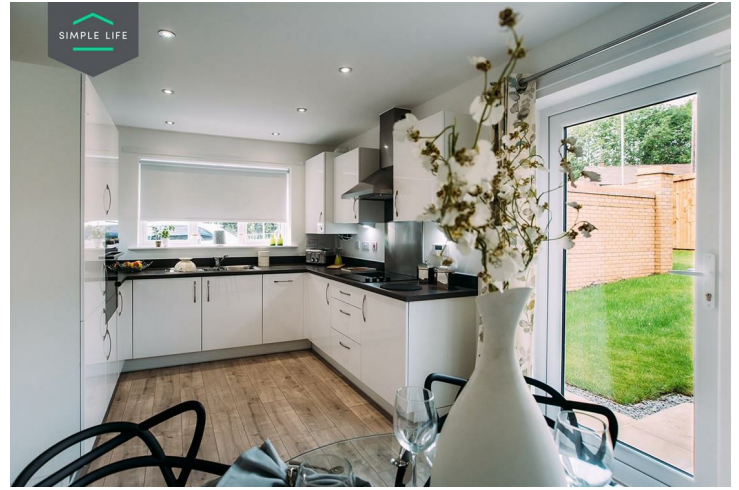
Brookfield Vale is located close to the M65 and M61, making it easy to travel to places such as Accrington, Manchester, Liverpool and Chester. Alternatively, Blackburn train station is one mile away, providing convenient travel to everyone.

Educational needs are well catered for as the development is within a few miles from Outstanding and Good Ofsted rated schools, including Blackburn the Redeemer CoE Primary, Audley Junior School and Newfield School.

To access the development, please use postcode BB2 3TZ.

Deposit £1290  
Holding Deposit £250  
Unfurnished  
Council Tax C  
Available 7th May 2026





## Key Features

- Car Parking Space
- Dishwasher
- Washing machine
- Carpets up the stairs and in the bedrooms
- Private back garden
- Security Alarm
- Fridge-freezer
- Modern kitchen worktops and units
- Wood-effect flooring in the kitchen

## Location

