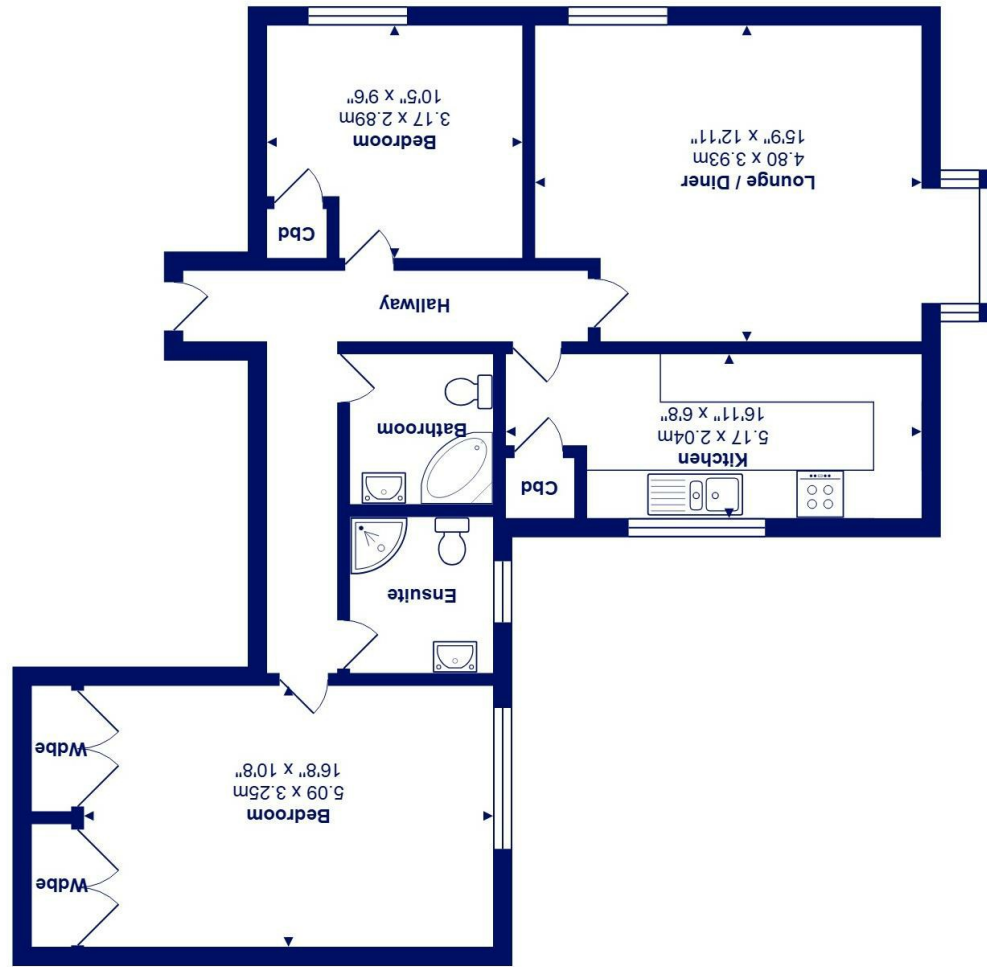




Total Area: 76.3 m² ... 821 ft²
All measurements are approximate and for display purposes only



Border Lodge Seaview Road, Walkford, BH23 5QJ

£249,950

Mitchells
1963 — TODAY

A very smart, ground floor flat of about 820 sq ft that is situated in a most tranquil location on the Chewton Farm Estate. Immaculate throughout, this lovely flat features bright and airy living space with modern fittings, allocated parking and a garage.

Border Lodge is a small, select development on the edge of Highcliffe that is perfect for people looking for complete peace and quiet, The sylvan setting is quite lovely and the gardens surrounding the building are very nicely looked after. Offered for sale with a share in the freehold and the balance of a 999 year lease and no forward chain.

- Purpose built flat on the ground floor with security entry phone system
- Two double bedrooms
- Two smart bath/shower rooms- one en suite
- Modern fitted kitchen with some integrated appliances
- Bright and airy living room with attractive outlook over the gardens
- Gas central heating and UPVC double glazing
- Shared freehold, balance of 999 year lease, (957 years remaining) Maintenance £2064 p/a
- Garage and allocated parking
- Great location, about 1 mile from the village centre and close to Chewton Glen Hotel and Spa

EPC Rating Band: C

Council Tax Band: D

Leasehold - Share of Freehold

Successful buyers will be required to complete online identity checks provided by Lifetime Legal. The cost of these checks is £49 inc. VAT per purchase which is paid in advance, directly to Lifetime Legal. This check verifies your identity in line with our obligations as stipulated by our regulatory body, HMRC

