

**LONDON
VICTORIA
GROUPS** 



LONDON
VICTORIA
GROUPS 



LONDON
VICTORIA
GROUPS 



LONDON
VICTORIA
GROUPS 

Chartwell House, 4 Palmer Road

, London SW11 4FP

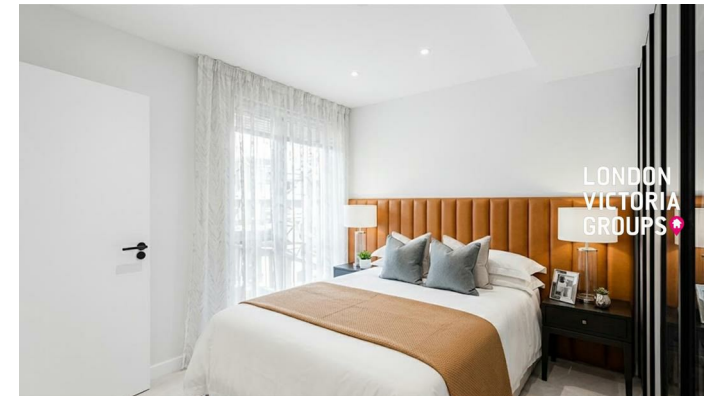
- Two-bedroom, two-bathroom apartment
- 24-hour concierge
- Swimming pool
- Private cinema
- EPC-B
- Bright open-plan living, dining, and kitchen area
- Residents' gymnasium
- Spa with sauna and steam room
- Battersea Power Station Station (Northern Line)
- CTB-E

£3,900 Per Month



LONDON
VICTORIA
GROUPS 

Local Authority **Wandsworth**
Council Tax Band **E**
EPC Rating **B**



London Office Office
Spaces Victoria, 25 Wilton Road, Pimlico,
London, SW1V 1LW

Contact
020 3084 3094
XL@londonvictoriagroups.co.uk
www.londonvictoriagroups.co.uk

Agents Note: Whilst every care has been taken to prepare these particulars, they are for guidance purposes only. All measurements are approximate and for general guidance purposes only and whilst every care has been taken to ensure accuracy, they should not be relied upon and potential buyers/tenants are advised to recheck the measurements.