



Sutherland Avenue

Maida Vale, W9

£3,500 per month
(£807.69 per week)

A bright and well finished three bedroom apartment set on the second floor of this beautiful period house located on a sought after Little Venice tree lined avenue. The property also enjoys access to the well maintained communal gardens.

CHESTERTONS



Sutherland Avenue

Maida Vale, W9

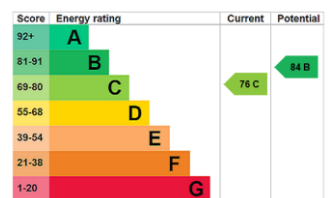
- This Property Is Not Suitable For Sharers
- Period Conversion in Little Venice
- Three Double Bedrooms & Two Bathrooms
- Access to Beautiful Communal Gardens
- Walking Distance to Warwick Avenue & Maida Vale Stations
- EPC Rating C



A bright and well finished three bedroom apartment set on the second floor of this beautiful period house located on a sought after Little Venice tree lined avenue.

The apartment comprises of a large hallway leading to three double bedrooms, two modern bathrooms, a modern fitted kitchen and a sizeable reception room overlooking the peaceful communal gardens to the rear. Further benefits include access to the well maintained communal gardens whilst being located close to the amenities of Little Venice, Warwick Avenue, the Canal, as well as the open green spaces of Paddington Recreational Ground.

Minimum Term: 12 months
Deposit Required: 5 weeks
Local Authority: City Of Westminster
Council Tax Band: G
EPC Rating: C
Unfurnished

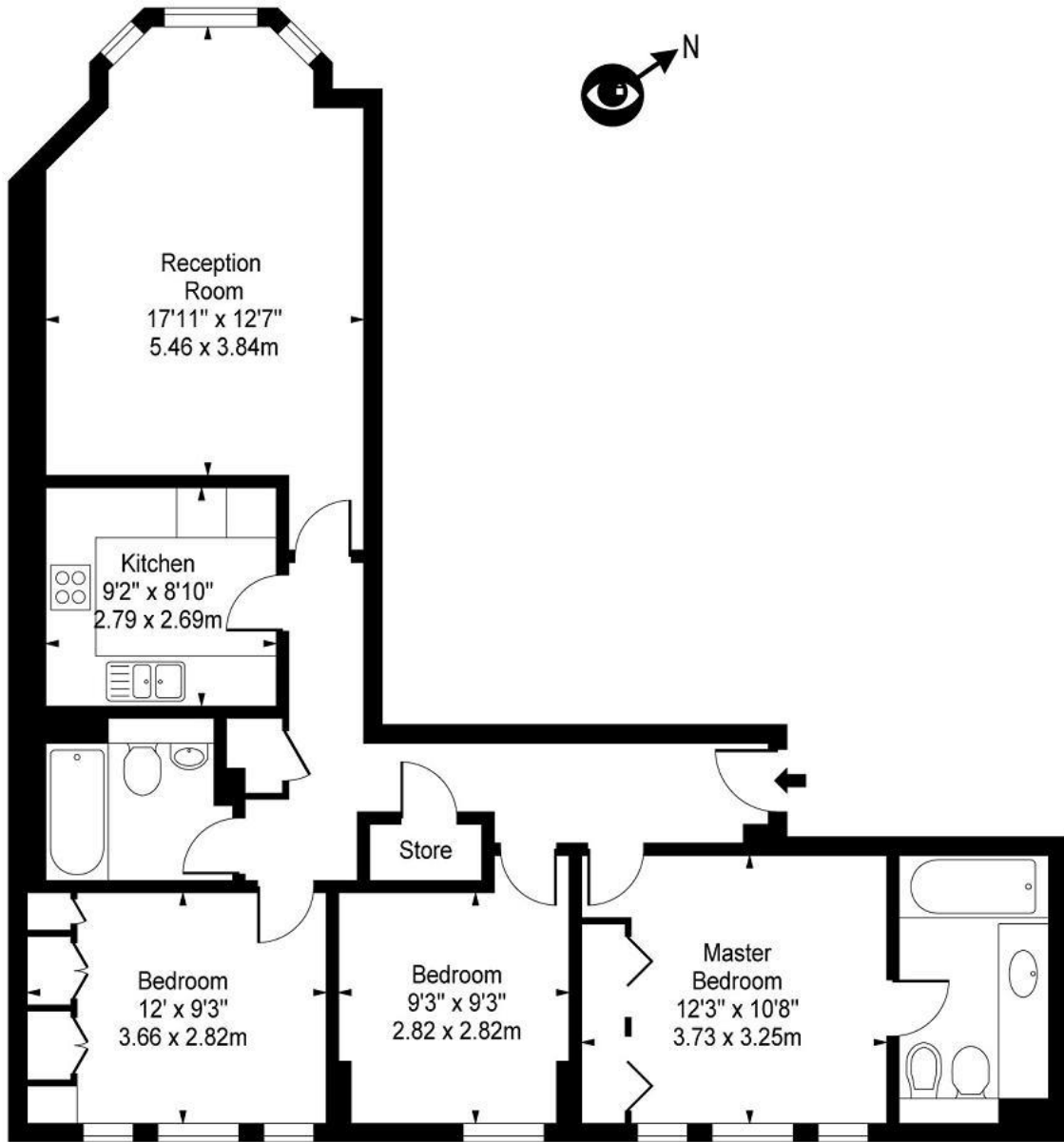


Chestertons Little Venice Lettings

26 Clifton Road
Maida Vale
London
W9 1SX
littlevenicelettingsusers@chestertons.co.uk
02072662369
chestertons.co.uk

Additional tenant charges apply (fees apply to non-AST tenancies only)
Tenancy Agreement Fee: £300
References per Tenant/Guarantor: £60
Inventory check (approx. £100 – £250 inc. VAT)
chestertons.co.uk/property-to-rent/applicable-fees

Sutherland Avenue, W9



Second Floor

Approx Gross Internal Area **915 Sq Ft - 85.00 Sq M**

For Illustration Purposes Only - Not To Scale

Floor Plan by www.bpmmediagroup.com

Ref: No. P53122

