



Flat 1, 148 London Road, High Wycombe, Buckinghamshire, HP11 1DQ

Asking Price | £1,400

Property Features

- Modern One Bedroom Apartment
- Private Garden
- Allocated Parking
- Gas Heating
- High Specification Throughout
- Within Walking Distance to High Wycombe Town Centre
- Dishwasher and Washer Dryer Included
- Ground Floor
- Available Late June
- EPC Rating D / Council Tax Band B

Full Description

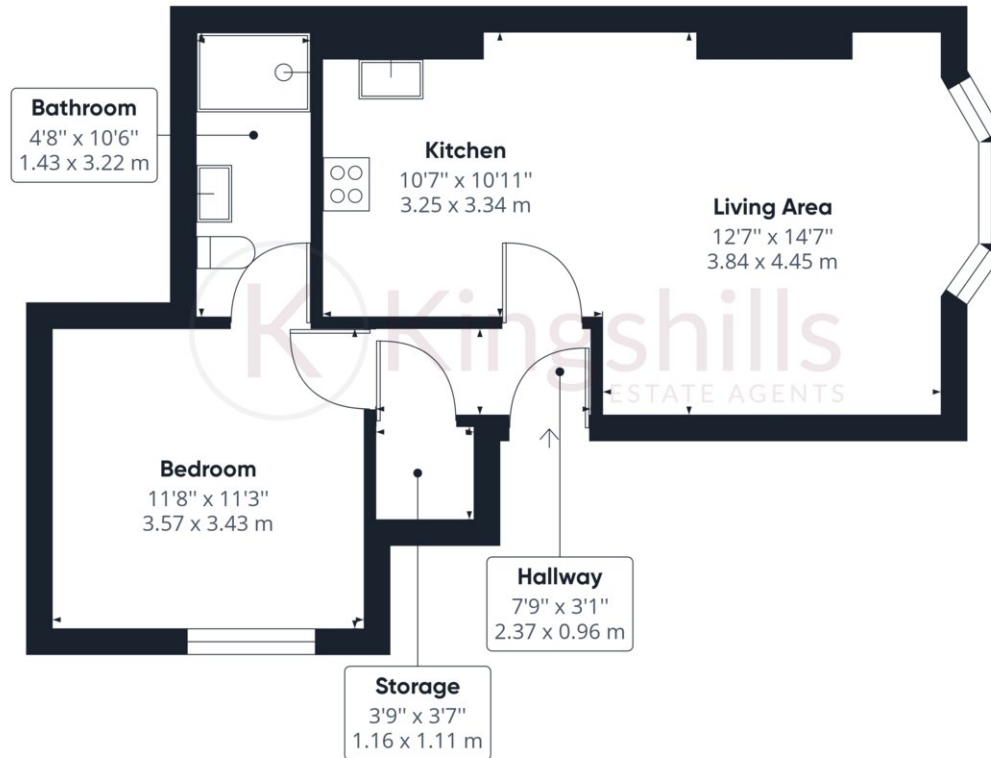
We are delighted to bring to the market this high-specification apartment which is within walking distance of High Wycombe town centre. This apartment offers the pinnacle of modern living within the heart of High Wycombe. Boasting a prime location just a leisurely stroll away from the vibrant town centre, this residence presents a unique opportunity to embrace a lifestyle of convenience and luxury.

This one-bedroom apartment offers a spacious and open plan kitchen/living/dining area. The kitchen provides an integrated washer dryer, dishwasher, oven, gas hob and fridge freezer. The bedroom is a spacious double room and has a luxury en-suite shower. The apartment further benefits from a large storage cupboard in the entrance hallway. Externally you will find private garden and parking for one-car to the rear, which has CCTV in operation 24 hours a day.

High Wycombe Town centre offers a abundance of shopping, dining, and entertainment options just a short walk away, creating an ideal setting for a vibrant urban lifestyle. The train connects High Wycombe to London Marylebone in just 24 minutes.







Approximate total area⁽¹⁾

527.16 ft²

48.98 m²

(1) Excluding balconies and terraces

While every attempt has been made to ensure accuracy, all measurements are approximate, not to scale. This floor plan is for illustrative purposes only.

GIRAFFE360