



# The Iris

3 bedroom detached home with upstairs study/4th bedroom and integral garage



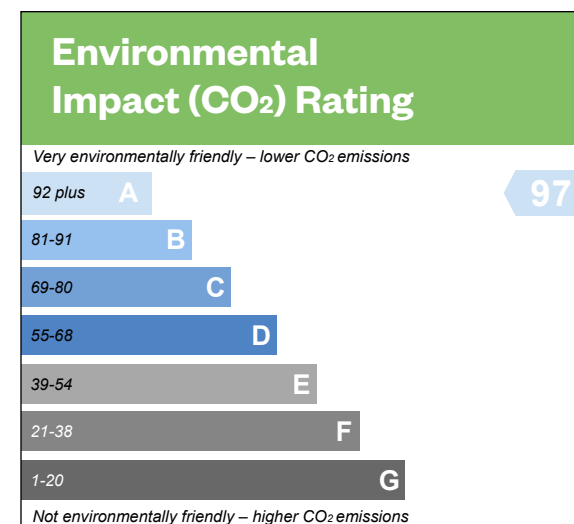
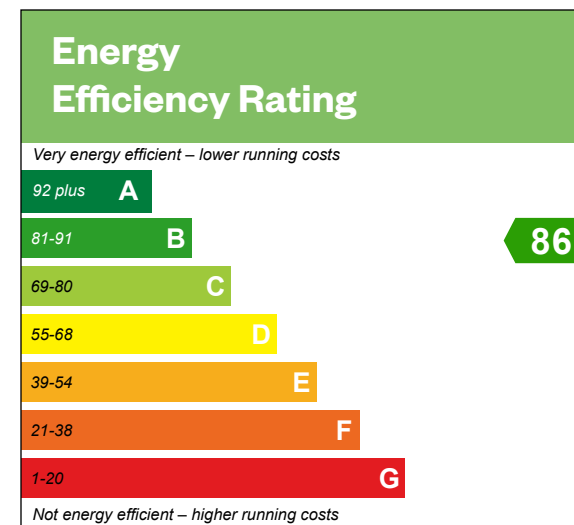
Computer generated image of The Iris

# The Iris

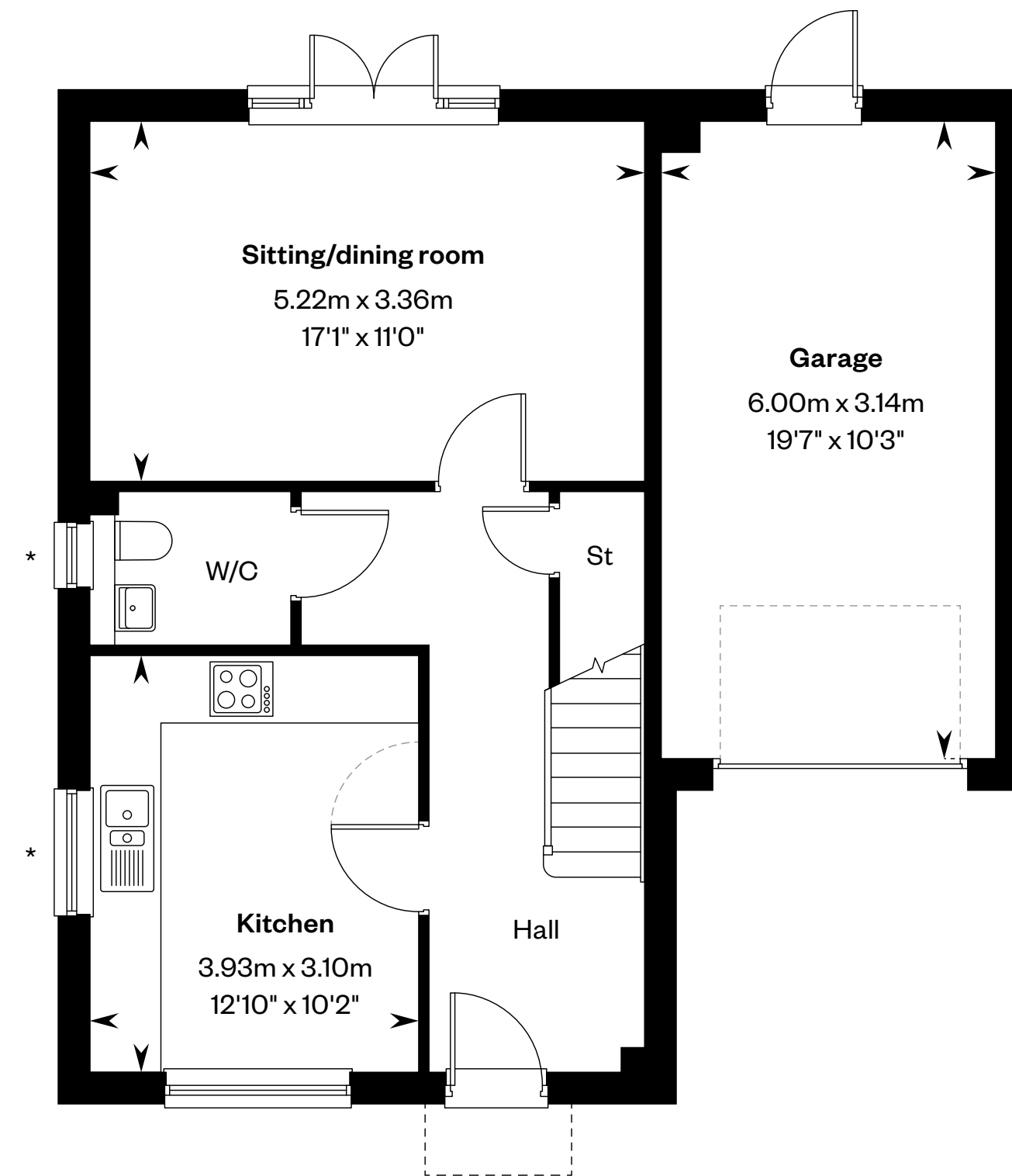
**3 bedroom detached home  
with upstairs study/4th bedroom and integral garage**

Plots 12 & 14 – as shown

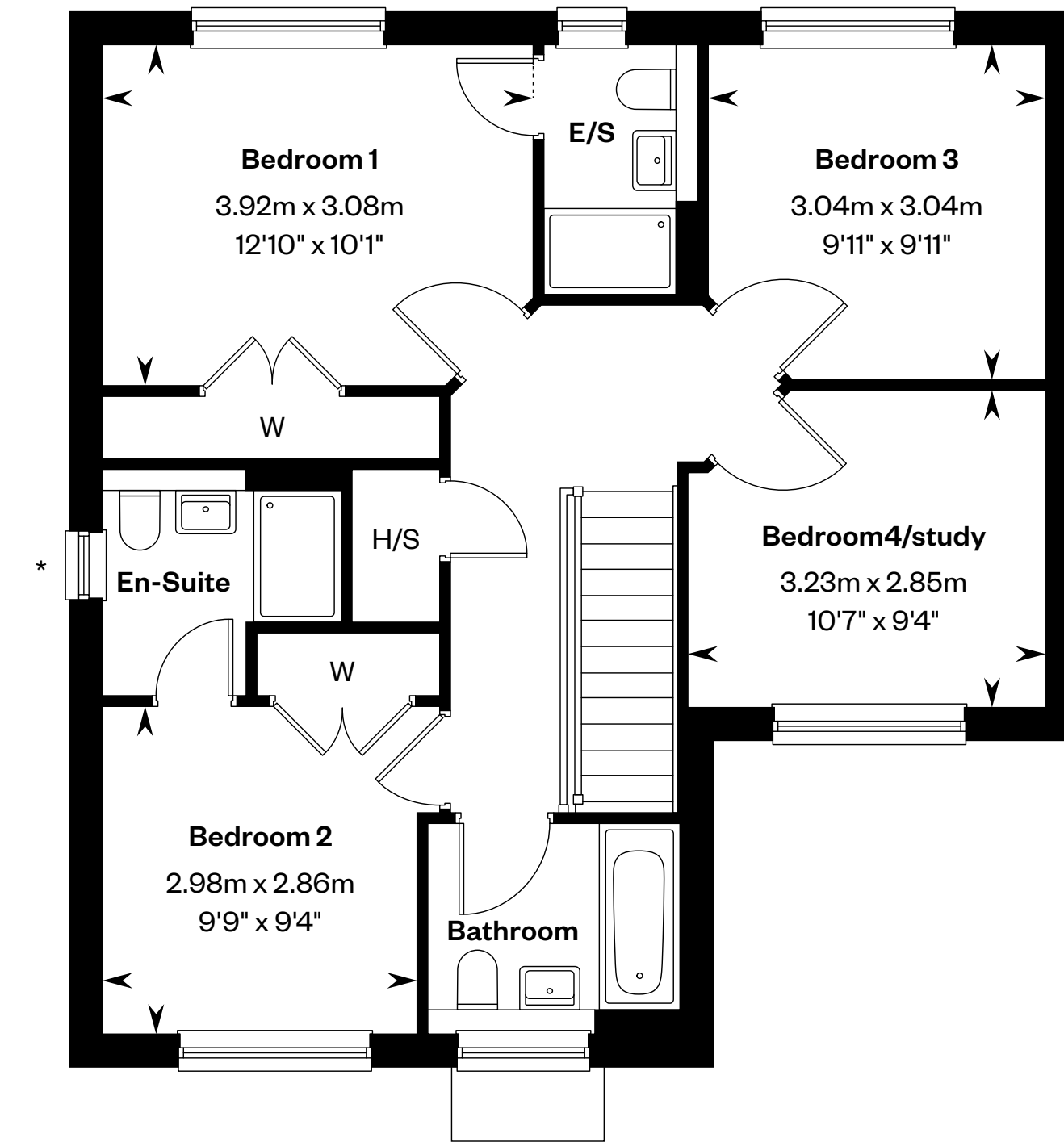
Plots 13, 15 & 19 – handed



This is a Predicted Energy Assessment for properties that are incomplete. Once the property is completed, this rating will be updated and an official Energy Performance Certificate will be created for the property.



Ground floor



First floor

\*Windows to plots 12, 13 & 15 only. Please ask your Sales Consultant for further details.

H/S: Heating source cupboard. St: Store cupboard. W: Wardrobe.

**IMPORTANT NOTICE TO CUSTOMERS:** The Consumer Protection from Unfair Trading Regulations 2008. Cala Homes (North Home Counties) Limited operates a policy of continual product development and the specifications outlined in this brochure are indicative only. The computer generated images and photographs do not necessarily represent the actual finishings/ elevation or treatments, landscaping, furnishings and fittings at this development. Information contained is accurate at date of publication on 15.01.26. See the main brochure for the full Consumer Protection statement.