

Towers Wills

Town & Country

📞 01935 577 032 | 01460 298 530 | ✉ info@towerswills.co.uk



293, St Michaels Avenue, Yeovil, Somerset BA21
4NB

Offers Over **£90,000**

Towers Wills are pleased to welcome to market to a well-presented ground floor apartment featuring an open plan kitchen/diner/lounge, one double bedroom with space for a large wardrobe, and a family bathroom with a white suite including a shower over the bath. The property also offers an entrance hallway with a storage cupboard, an allocated parking space, and access to communal gardens. Ideal for first-time buyers or investors and offered with no forward chain.

Accommodation:

Offered to the market with no forward chain, this well-maintained one bedroom ground floor apartment presents an ideal opportunity for first-time buyers, investors, or those looking to downsize.

The accommodation features a spacious open plan kitchen/diner/lounge, creating a bright and versatile living space perfect for relaxing or entertaining. The double bedroom offers ample space for a large wardrobe, while the family bathroom is fitted with a modern white panel suite comprising a bath with shower over, W/C, and wash hand basin. A welcoming entrance hallway provides access to all rooms and includes a useful storage cupboard for added convenience.

Externally, the property benefits from an allocated parking space, and access to a well-maintained communal garden area, ideal for enjoying outdoor space without the upkeep.

Situation:

The property enjoys a prime position on St. Michaels Avenue, Ideally situated, it is within easy walking distance of local amenities, including primary and secondary schools, Yeovil College, a Co-Op store, and a range of local shops. Several bus stops are nearby, and the town centre is easily accessible, making this a highly convenient and sought-after location.

Early viewing is highly recommended to appreciate all this property has to offer.

Agents Note:

The apartment benefits from a long lease with 957 years remaining.

The vendors have advised that a new boiler was installed in December 2025 and comes with a 5 year warranty.

Key Features

- NO ONWARD CHAIN
- One double bedroom
- Open plan living space
- Family bathroom with white suite
- Entrance hallway with storage
- Allocated parking
- Communal gardens
- Ground floor position

Contact Us

Towers Wills Estate Agents - Yeovil

114, Hendford Hill
Yeovil

Somerset

BA202RF

T: 01935 577032

E: info@towerswills.co.uk

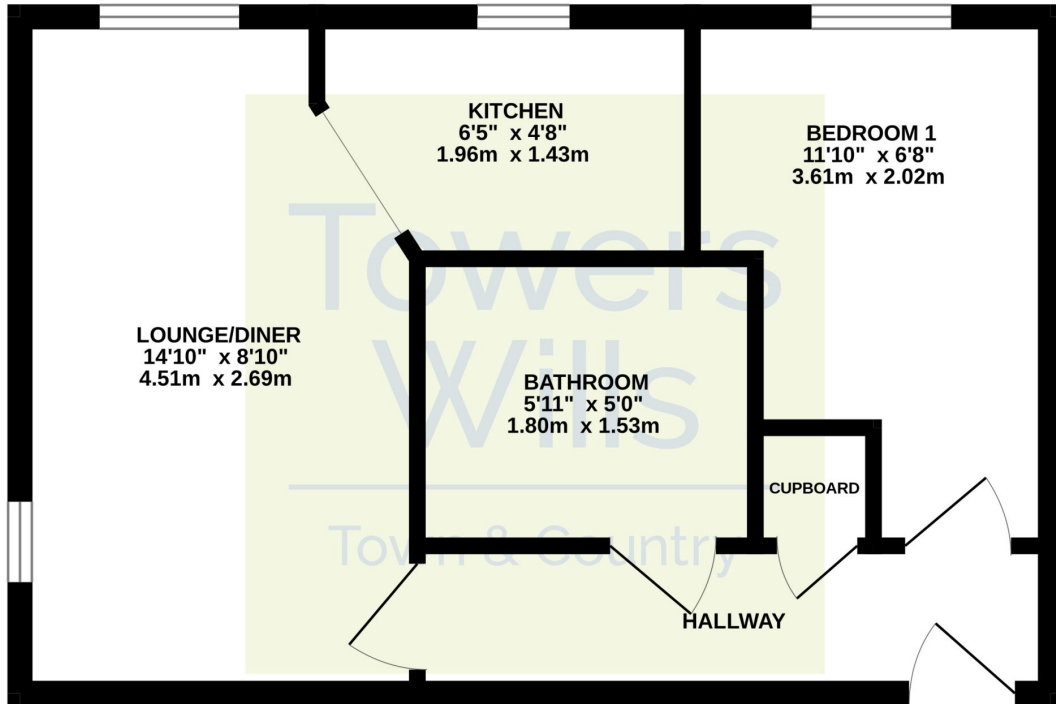
Energy Efficiency

Score	Energy rating	Current	Potential
92+	A		
81-91	B		
69-80	C		78 C
55-68	D	67 D	
39-54	E		
21-38	F		
1-20	G		



Floor Plan

GROUND FLOOR



Whilst every attempt has been made to ensure the accuracy of the floorplan contained here, measurements of doors, windows, rooms and any other items are approximate and no responsibility is taken for any error, omission or mis-statement. This plan is for illustrative purposes only and should be used as such by any prospective purchaser. The services, systems and appliances shown have not been tested and no guarantee as to their operability or efficiency can be given.
Made with Metropix ©2025

Please Note No tests have been undertaken of any of the services and any intending purchasers should satisfy themselves in this regard. Towers Wills Ltd for themselves and for the vendor of this property whose agents they are, give notice that, (i) these particulars do not constitute any part of an offer or contract, (ii) all statements contained within these particulars are made without responsibility on the part of Towers Wills or the vendor, (iii) whilst made in good faith, none of the statements contained within these particulars are to be relied upon as a statement of representation or fact, (iv) any intending purchaser must satisfy him/herself by inspection or otherwise as to the correctness of each of the statements contained within these particulars, (v) the vendor does not make or give either Towers Wills or any person in their employment any authority to make or give representation or warranty whatsoever in relation to this property.

Photographs / Floor Plans Photographs are reproduced for general information and it must not be inferred that any item is included for sale with this property. Please note floor plans are not to scale and are for identification purposes only. The photographs used in these particulars may have been taken with the use of a wide angle lens. If you have any queries as to the size of the accommodation or plot, please address these with the agent prior to making an appointment to view

Towers Wills

The White House, 114 Hendford Hill, Yeovil BA20 2RF

Yeovil 01935 577032 / South Petherton 01460 298530

info@towerswills.co.uk | www.towerswills.co.uk