



Park Hill, SW4

£3,000 Per calendar month

An attractively designed lower ground apartment which offers contemporary features, exposed brick and is finished to a high standard throughout.

Park Hill is situated within the Abbeville Village, a highly desirable area renowned for its many boutique shops, bars and restaurants. Clapham Common along with its respective station, are just a stroll away.

Features

- Two Double Bedrooms
- Reception Room
- Lower Ground Floor
- Modern Specification
- Exposed Feature Wall
- Abbeville Village

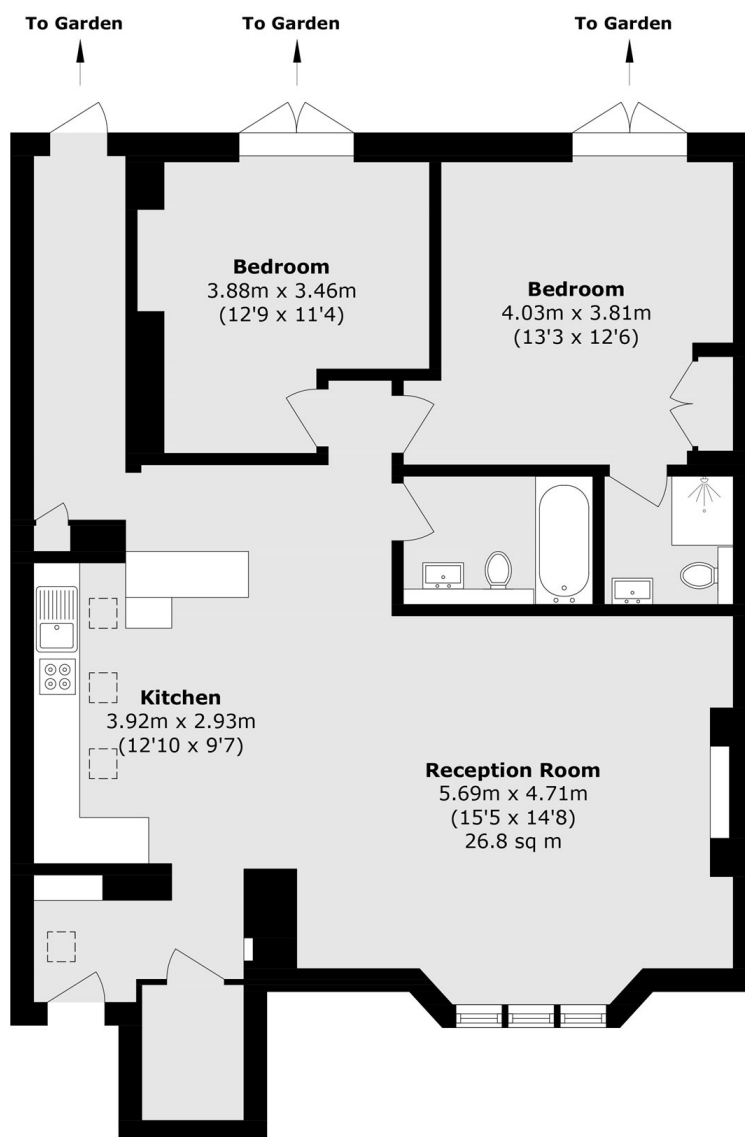


Park Hill, SW4

This high specification property comes with two double bedrooms, an open plan reception room, a modern fully fitted kitchen and two bathrooms.



Park Hill, London, SW4



Total area (approx.): 101.1 sq. m (1088.2 sq. ft)