



Harwood Road, SW6

£750,000

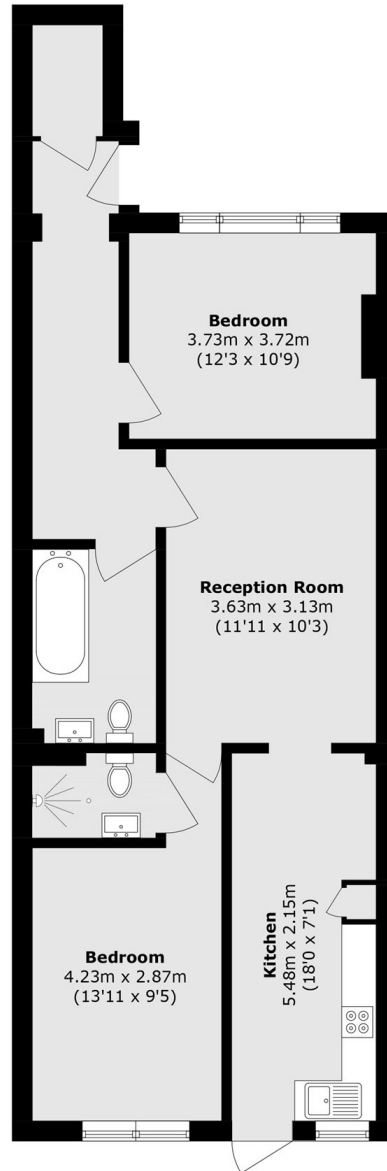
A spacious two bedroom, two bathroom flat with its own private entrance featuring a southwest facing private garden extending approximately 45ft. Recently refurbished throughout, the property offers a generously proportioned living room and a fully fitted semi-open plan kitchen and dining area. The kitchen provides direct access to the private garden, creating an ideal setting for indoor outdoor living and entertaining.

Located near to Eel Brook Common, the property is within close proximity to the amenities and transport links of Parsons Green, Fulham Broadway; with the Kings Road and Chelsea a short walk away.

Features

- Two Double Bedrooms
- 45ft Garden
- Open Plan Kitchen Living
- Two Modern Bathrooms
- Chain Free
- Share Of Freehold

Harwood Road, London, SW6



Lower Ground Floor

Total area (approx.): 71.3 sq. m (767.4 sq. ft)