



Webbs
Helping people move since 1994

John Till Close | Rugeley | WS15 2AF
Offers In The Region Of £230,000



Summary

** POPULAR LOCATION ** IDEAL FOR FIRST TIME BUYERS ** CLOSE TO TOWN CENTRE ** THREE BEDROOMS ** CONSERVATORY ** LIVING DINING ROOM ** KITCHEN ** REAR GARDEN ** OFF ROAD PARKING ** VIEWING ADVISED **

WEBBS ESTATE AGENTS are pleased to market this three bedroom semi detached home, located in a popular area of Rugeley on John Till Close. The property would be ideally suited to a first time buyer looking to get their foot on the property ladder. Located close to amenities, useful transport links, schools and a short distance to Rugeley Town Centre. The internal accommodation briefly comprises; entrance hallway, living/ dining room, kitchen, conservatory, three bedrooms and bathroom. The property also benefits from a rear garden and off road parking.

Key Features

- POPULAR LOCATION
- CLOSE TO TOWN CENTRE
- CONSERVATORY
- KITCHEN
- OFF ROAD PARKING
- IDEAL FOR FIRST TIME BUYERS
- THREE BEDROOMS
- LIVING DINING ROOM
- REAR GARDEN
- VIEWING ADVISED

Rooms and Dimensions

Entrance Hallway

Kitchen

10'6" x 9'1" (3.22 x 2.77)

Living Room

20'0" x 11'1" (6.11 x 3.39)

Conservatory

9'10" x 17'7" (3.01 x 5.38)

Landing

Bedroom One

13'4" x 9'9" (4.08 x 2.99)

Bedroom Two

8'11" x 5'9" (2.74 x 1.76)

Bedroom Three

6'5" x 10'10" (1.96 x 3.31)

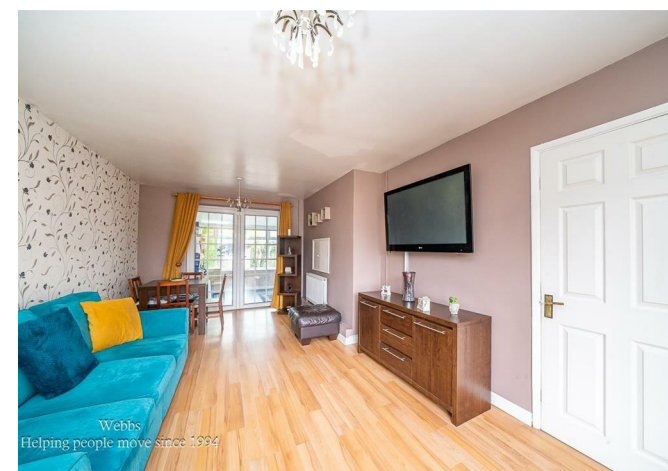
Bathroom

5'5" x 7'10" (1.67 x 2.41)

Driveway

Front & Rear Gardens

IDENTIFICATION CHECKS - C





Webbs
Helping people move since 1994



Webbs
Helping people move since 1994



Webbs
Helping people move since 1994



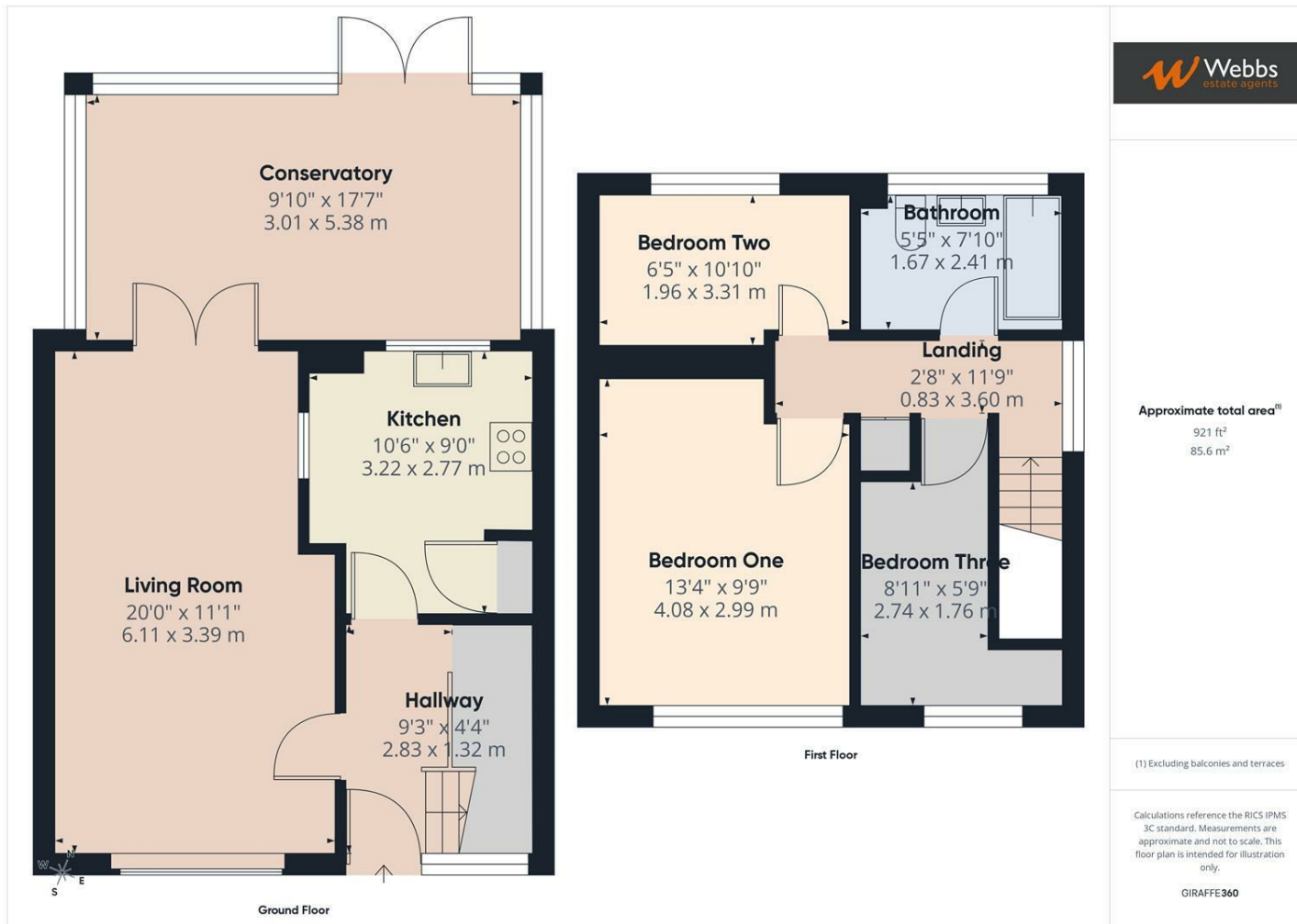
Webbs
Helping people move since 1994



Webbs
Helping people move since 1994



Webbs
Helping people move since 1994



Webbs Estate Agents - endeavour to maintain accurate depictions of properties in Virtual Tours, Floor Plans and descriptions, however, these are intended only as a guide and purchasers must satisfy themselves by personal inspection.

