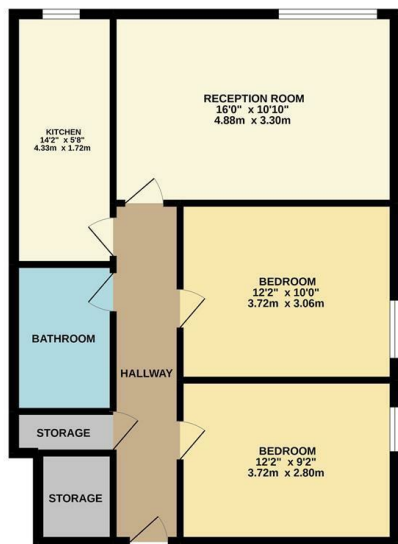




GROUND FLOOR  
642 sq. ft. (59.6 sq.m.) approx.



TOTAL FLOOR AREA: 642 sq. ft. (59.6 sq.m.) approx.  
While every attempt has been made to ensure the accuracy of the information contained herein, measurement of areas, volumes, rooms and any other facts are approximate and no responsibility is taken for any error, omission or inaccuracy. This plan is for general guidance only and should not be used as a basis for any legal proceedings. The services, fixtures and fittings shown on this plan are not intended to be guaranteed as to their quality or efficiency and are shown as they appear on the date of the plan.

Council: Waltham Forest Council | Council Tax Band: C | Floor Area: 642.00 sq ft

Energy Efficiency Rating		Current	Potential
Very energy efficient - lower running costs			
(92 plus) <b>A</b>			
(81-91) <b>B</b>			
(69-80) <b>C</b>		79	81
(55-68) <b>D</b>			
(39-54) <b>E</b>			
(21-38) <b>F</b>			
(1-20) <b>G</b>			
Not energy efficient - higher running costs			
<b>England &amp; Wales</b>	EU Directive 2002/91/EC		



The Agent has not tested any apparatus, equipment, fixtures and fittings or services and so cannot verify that they are in working order or fit for the purpose. A buyer is advised to obtain verification from their solicitor or surveyor. References to the tenure of a property are based on information supplied by the seller. The agent has not had the sight of the title documents. A buyer is advised to obtain verification from their solicitors.

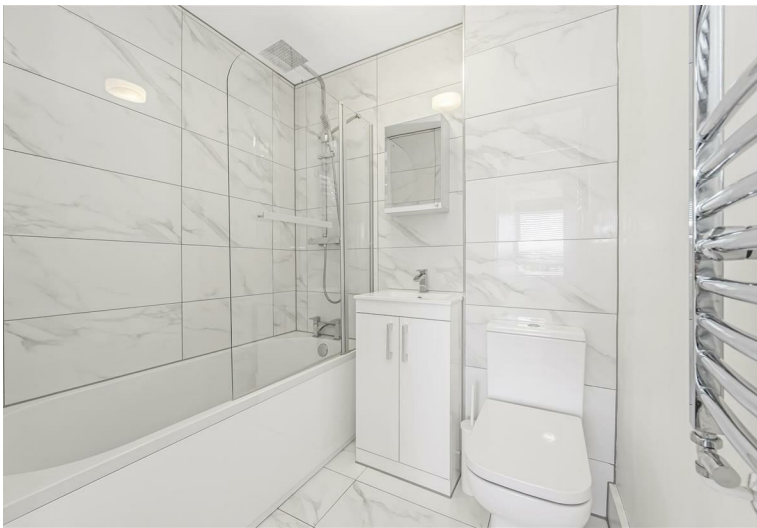


Retingham Way, E4 6RS  
£1,700 Per Month

Bedrooms: 2 | Reception Rooms: 1 | Bathrooms: 1



Request a Viewing: **020 8529 5500** Email: [northchingford@wearechurchills.co.uk](mailto:northchingford@wearechurchills.co.uk)



This superb and fully refurbished two spacious double bedrooms, located on the third floor making it an ideal choice for couples, small families, or professionals seeking a comfortable living space. As you enter the apartment, you will be greeted by a bright and airy reception room, perfect for relaxing or entertaining guests. The entire flat has been meticulously redecorated, ensuring a fresh and modern feel throughout. The fitted kitchen is equipped with brand new appliances, providing both style and functionality for your culinary adventures. The newly installed bathroom offers a contemporary design, adding to the overall appeal of this lovely home.

