



Stunning six bedroom home in a prestigious Kingswood location

exclusive to

**SAUNDERS**

[richardsaunders.co.uk](http://richardsaunders.co.uk)

# Sandy Lane Kingswood KT20

Banstead Village 4.1 miles  
London by rail 45 minutes  
M25 (Junction 8) 3.7 miles

All times and distances are approximate

This stunning and modern six bedroom family home is situated in one of Kingswood's most sought after private roads.

The property offers luxurious modern living throughout and is within an exclusive gated community, set within secure, landscaped grounds.

Fibre To Cabinet Broadband Available

Gas, water, electricity, broadband and council tax utility bills are the tenants responsibility

We hold our deposits in a TDS scheme

The information is correct to the best of our knowledge on marketing this property

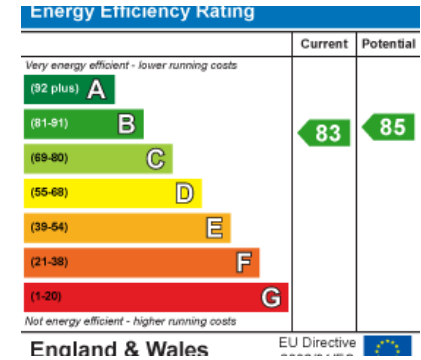


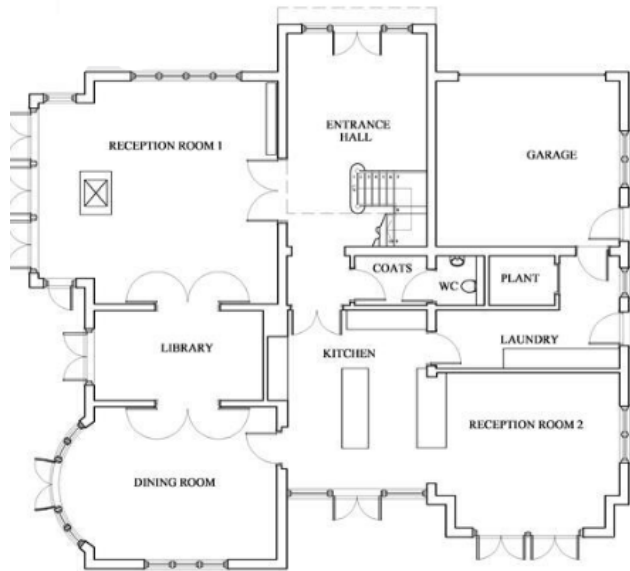
To Let £8,400pcm



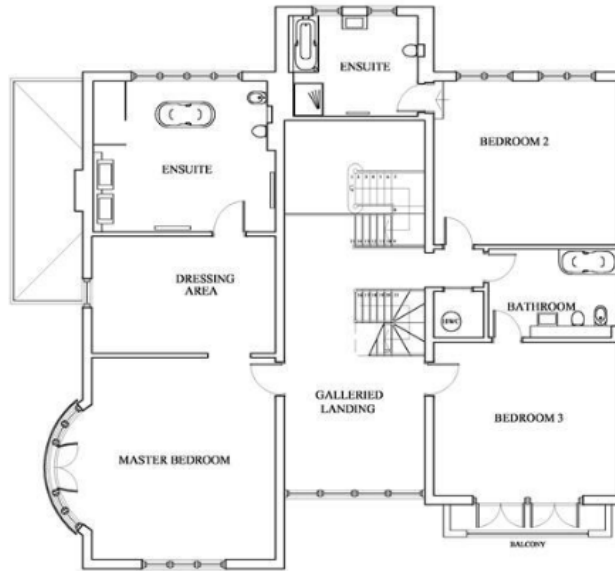


Available Now | Six Bedrooms | Exclusive Gated Community | Unfurnished | Landscaped Gardens | Parking Multiple Vehicles | Close To Station

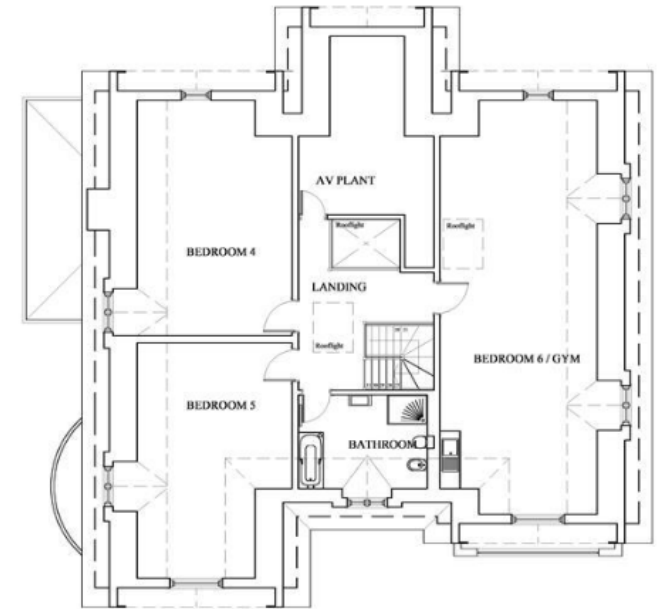




**E** GROUND FLOOR PLAN



**F** FIRST FLOOR PLAN



**G** SECOND FLOOR PLAN

discover more at [richardsaunders.co.uk](http://richardsaunders.co.uk)



**IMPORTANT NOTICE TO PURCHASERS:** We endeavour to make our sales particulars accurate and reliable, however, they do not constitute or form part of an offer or any contract and none is to be relied upon as statements of representation or fact. The services, systems and appliances listed in this specification have not been tested by us and no guarantees as to their operating ability or efficiency are given. All measurements have been taken as guide to prospective buyers only, and are not precise. If you require clarification or further information on any points, please contact us, especially if you are travelling some distance to view.

Viewing  
Please call us to arrange  
a viewing appointment

1 Waterhouse Lane  
Kingswood  
01737 360000

2 High Street  
Banstead  
01737 363333

Residential Lettings  
All Areas  
01737 370700

