



## Chichele Road, NW2 £500,000

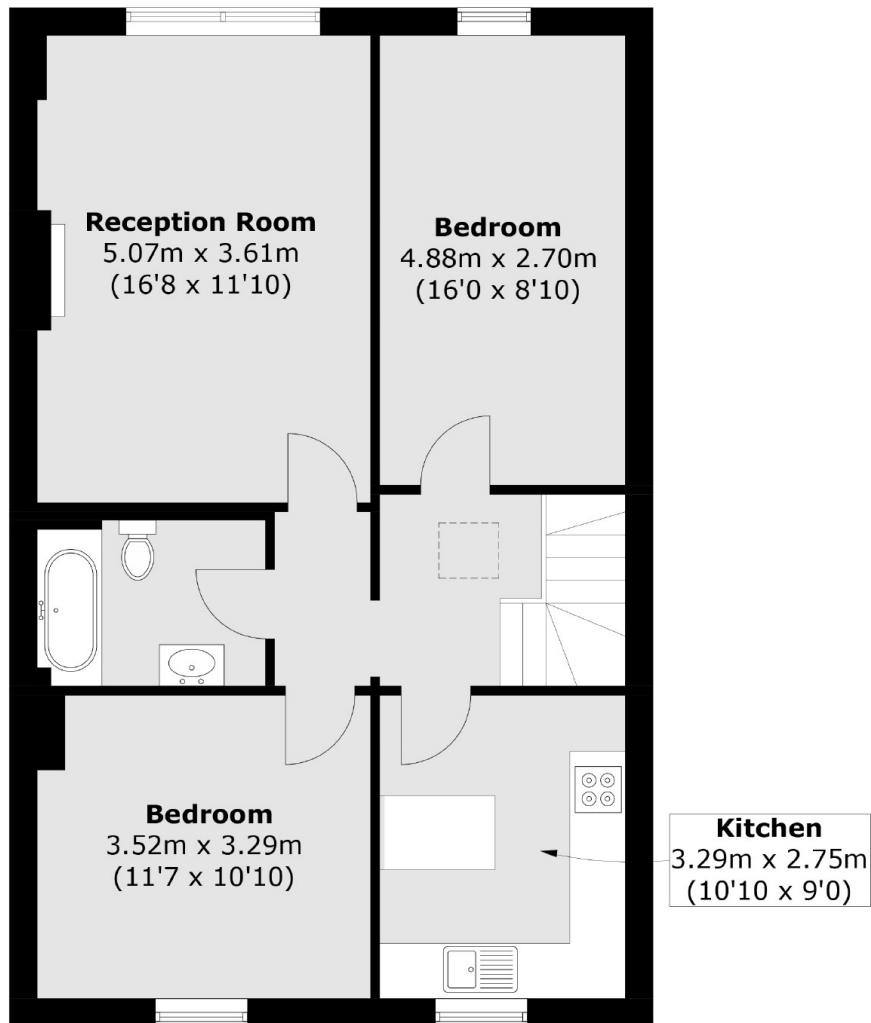
A bright and well-appointed top floor period conversion offering close to 750 square foot of stylish living space in the highly desirable Willesden Green area. With two double bedrooms, a large reception room, ample storage, and no onward chain.

Chichele Road is situated in Willesden Green with its many local amenities, delis, shops, and cafés. Close to Gladstone Park, along with Willesden Green underground station (zone 2 & 3 Jubilee line) and Cricklewood Thameslink moments away, offering great transport links to the city.

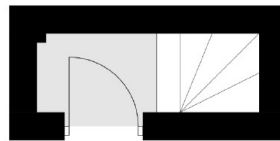
### Features

Period Conversion  
Top Floor  
Two Double Bedrooms  
Eat-In Kitchen  
In Excess of 740 Sq.Ft.  
No Onward Chain

Chichele Road,  
London, NW2



### Second Floor



### First Floor

Total area (approx.): 68.8 sq. m (740.4 sq. ft)