



Guide Price
£525,000

Freehold

4x  3x  1x 

**Well Street, Loose,
Maidstone, Kent, ME15**

OVER 60?

Secure this property
for up to **59% less!**

Wards
Helping you move forwards



Main features

- Beautifully presented, modern home in a sought after village location
- NHBC remaining for peace of mind
- Vast accommodation set over 3 floors, with a luxurious bedroom 1 and its' own en suite bathroom on the second floor
- Located in picturesque Loose village with scenic countryside on your doorstep, walking distance to sought after Loose Primary School
- NO FORWARD CHAIN

Accommodation

GROUND FLOOR

Entrance Hall
 Downstairs Cloakroom: 5'9 x 3'4 (1.75m x 1.02m)
 Lounge: 13'8 x 12'6 (4.17m x 3.81m)
 Kitchen/Diner: 20'0 x 19'0 (6.10m x 5.80m)

FIRST FLOOR

Landing
 Bedroom 2: 11'9 x 10'6 (3.58m x 3.20m)
 En Suite Shower Room: 10'5 x 2'9 (3.18m x 0.84m)
 Bedroom 3: 8'2 x 8'2 (2.49m x 2.49m)
 Bedroom 4: 8'5 x 8'3 (2.57m x 2.52m)
 Bathroom: 12'2 x 7'7 (3.71m x 2.31m)

SECOND FLOOR

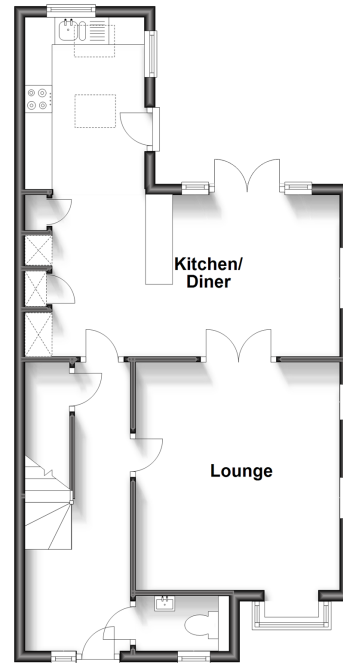
Bedroom 1: 16'8 x 13'2 (5.08m x 4.02m)
 En Suite Bathroom: 8'2 x 5'5 (2.49m x 1.65m)

OUTSIDE

Garage and Driveway
 Front and Rear Gardens

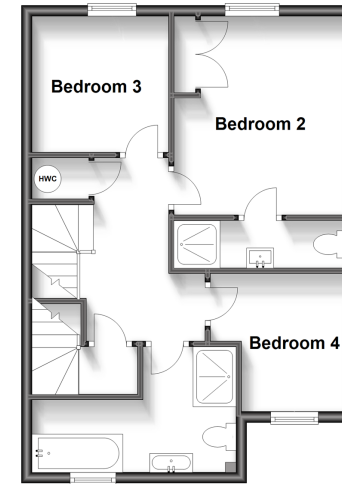
Ground Floor

Approx. 53.7 sq. metres (578.2 sq. feet)



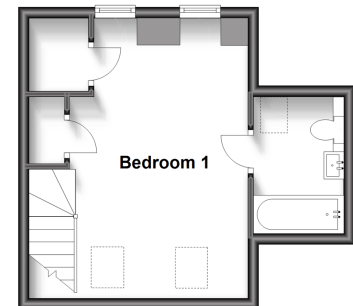
First Floor

Approx. 46.3 sq. metres (498.5 sq. feet)



Second Floor

Approx. 25.2 sq. metres (271.7 sq. feet)



Call Loose - 01622 744067 ■ wardsofKent.co.uk

- Legal advice should be taken to verify fixtures/fittings, planning, alterations and/or lease details
- Through a Homewise Home For Life Plan people aged 60+ can secure this property for up to 59% less, by purchasing a Lifetime Lease

- Appliances & services are untested, dimensions are approximate and floor plans are not to scale



13021415/20260311/VMK/VMK