

DOWN STREET
MEWS

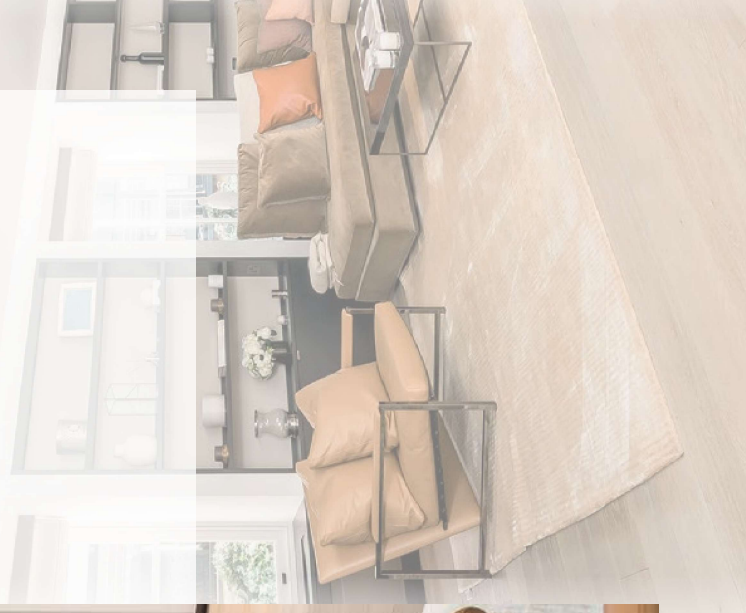
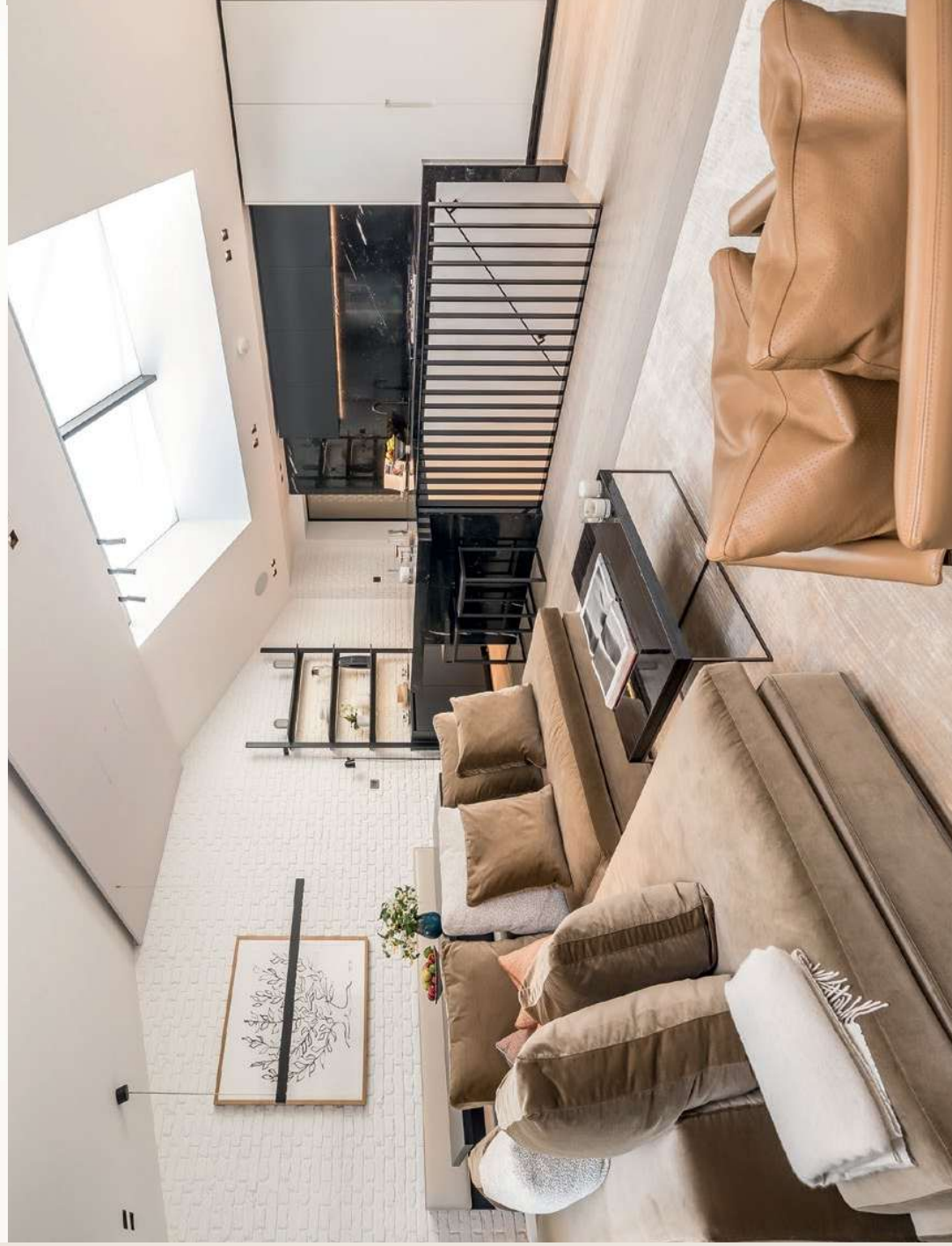
MAYFAIR, W1J

A beautifully refurbished, interior-designed two bedroom, two bathroom apartment in a secure gated mews in the heart of Mayfair, moments from the green open spaces of Green Park.

THE PROPERTY

The property has been refurbished by a leading interior designer to create a contemporary space with timeless craftsmanship, featuring exposed brickwork, wooden flooring and luxurious built-in furniture, fixtures and fittings.

The reception room offers an excellent dining and entertaining space with a bespoke designer kitchen fitted with high-specification appliances. The property is filled with natural light and includes a private balcony, air-conditioning and luxurious bathrooms.





FEATURES

- Two Double Bedrooms
- Two Luxury Bathrooms
- Interior Designed
- Wooden Flooring
- Air-Conditioning
- Private Balcony



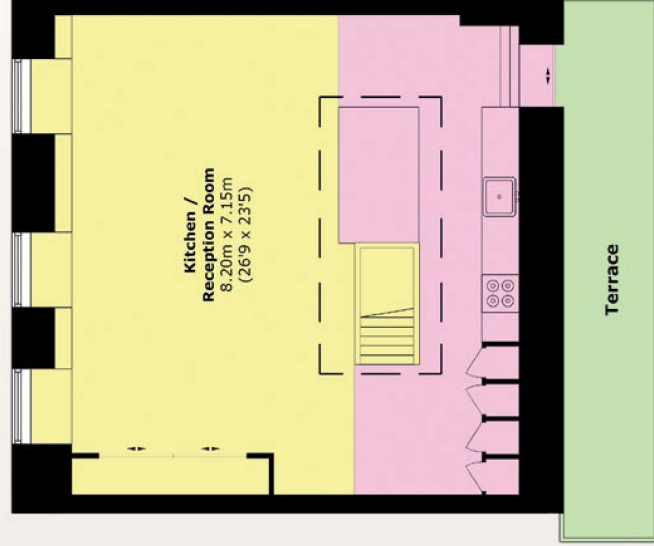
LOCATION

Ideally located adjacent to Hyde Park and Green Park, the property enjoys immediate access to Mayfair's world-renowned boutiques, celebrated restaurants, distinguished hotels, private members' clubs, galleries and museums.

TOTAL AREA (APPROX): 1481.1 SQ. FT (137.6 SQ. M)
TERRACE AREA (APPROX): 88.6 SQ. FT (8.2 SQ. M)



FIRST FLOOR



SECOND FLOOR



WETHERELL
MAYFAIR'S FINEST PROPERTIES

102 Mount Street, London, W1K 2TH
020 7529 5588 • wetherell.co.uk

Wetherell have no authority to make or give any representations or warranties in relation to the property. These particulars do not form part of any offer or contract and must not be relied upon as statements or representations of fact. Any areas, measurements or distances are approximate. The text, photographs and plans are for guidance only and are not necessarily comprehensive. It should not be assumed that the property has all the necessary planning, building regulation or other consents and Wetherell have not tested any services, equipment or facilities. Purchasers must satisfy themselves by inspection or otherwise, Energy Efficiency Rating: Band C, June 2026.