



Camden Mews

London, NW1

Asking Price £1,900,000

Situated on the second longest mews in London sits this spacious, four double bedroom mews house featuring a double garage and two roof terraces, both at the front and rear of the property.

Entering the ground floor, you're welcomed by a spacious entrance hall leading to two well-appointed bedrooms, one of which offers a modern en-suite shower room, with the other en-suite currently set up as a shell, ready to be fitted. A large integrated double garage provides secure parking and additional storage space, offering both convenience and flexibility. There is also a guest w/c.

The first floor is an impressive entertaining space, featuring an expansive reception room with ample natural light and direct access to a private terrace. A dedicated dining room flows seamlessly into a well-equipped kitchen, creating a wonderful entertaining space.

The second floor offers two further bedrooms, each with access to their own en-suite bathrooms. This level also benefits from a second private terrace and areas with characterful sloped ceilings.



Camden Mews

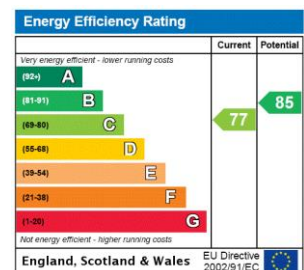
London, NW1

- Excellent Location
- Four Double Bedrooms
- Double Garage
- Roof Terrace
- Lateral Living



Camden Mews, situated in the Camden Square Conservation area, is a desirable, charming, cobbled street centrally located with good access to the many amenities of Camden, Kings Cross and Kentish Town with the delights of Hampstead Heath and Regents Park close to hand. Camden School for Girls is a short walk away.

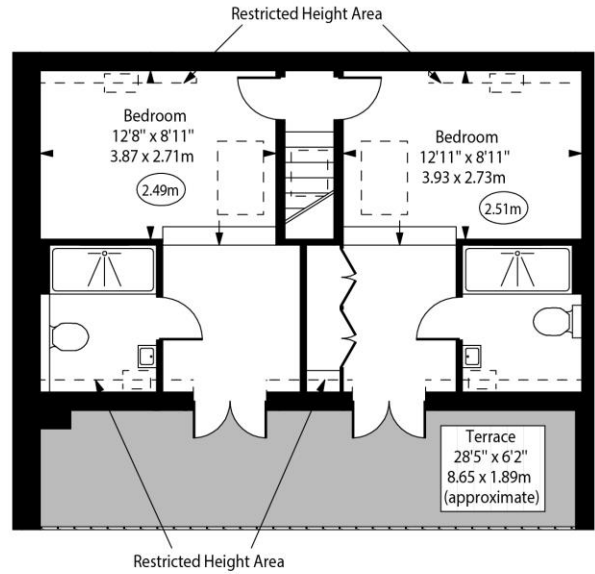
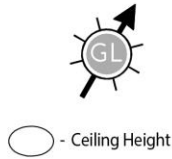
Tenure: Freehold
Service Charge: N/A
Ground Rent: N/A
Local Authority: London Borough Of Camden
Council Tax Band: G



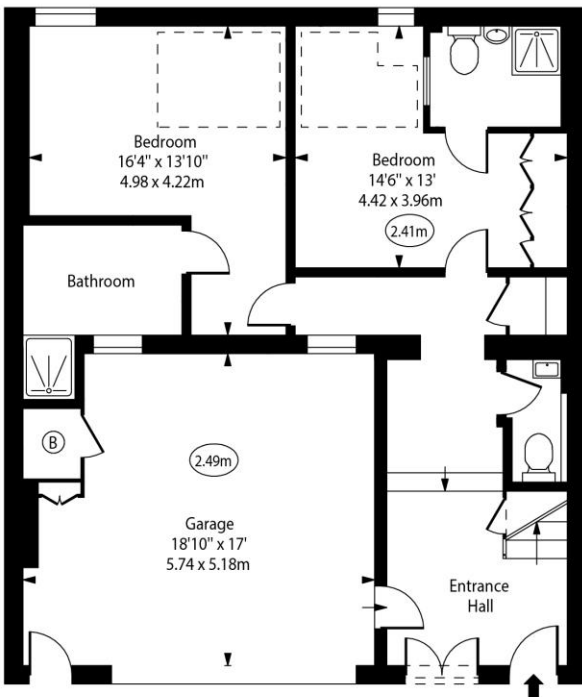
Chestertons Camden & Kentish Town Sales

99-101 Parkway
 Camden
 London
 NW1 7PP
 camden@chestertons.co.uk
 020 7267 2053
 chestertons.co.uk

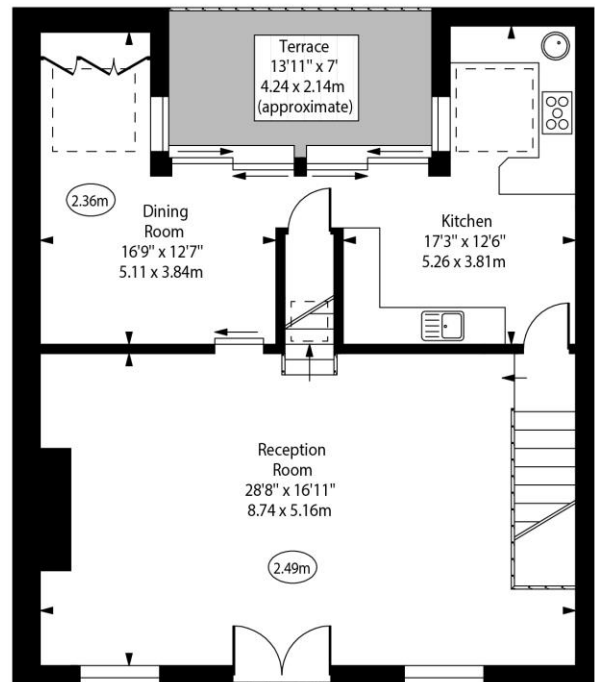
Camden Mews



Second Floor
Gross Internal Area - 500 Sq Ft - 46.45 Sq M



Ground Floor
Gross Internal Area - 997 Sq Ft - 92.62 Sq M



First Floor
Gross Internal Area - 853 Sq Ft - 79.24 Sq M

Approx Gross Internal Area 2325 Sq Ft - 215.99 Sq M

Approx. Floor Area Including Restricted Heights 2350 Sq Ft - 218.32 Sq M

Every attempt has been made to ensure the accuracy of the floor plan shown. However, all measurements, fixtures, fittings, and data shown are approximate interpretations and for illustrative purposes only. Measured according to the RICS. Not To Scale.
www.goldlens.co.uk
Ref. No. 031573K

