



Stoneacre
Properties



Street Lane

Leeds, LS8 2AL

£180,000



Street Lane

Leeds, LS8 2AL

£180,000



Entrance

The flat has its own private entrance and entering you are welcomed into the hallway which offers access throughout the property. Newly laid laminate flooring runs throughout the flat.

Living Room

Large living room is flooded with natural light with plenty of space for seating and a feature fireplace.

Kitchen

Newly installed kitchen comprises integrated fridge, oven, and electric hob with extractor above as well as storage space.

Bedroom 1

Large double bedroom with laminate flooring and large double glazed window.

Bedroom 2

Second bedroom with storage cupboard, overlooks the front garden.

Bathroom

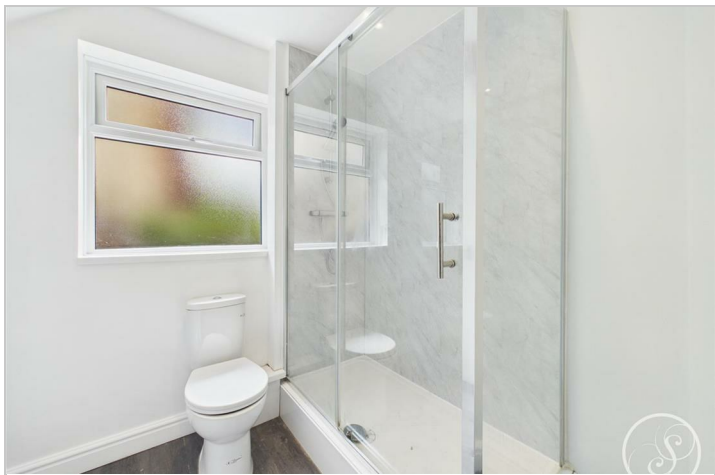
Newly installed bathroom with walk-in shower, toilet and sink, and store cupboard.

External

The property comes with a parking space (left hand space) and the front garden belongs to this property.

Lease

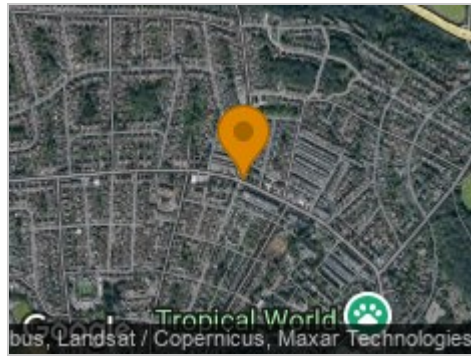
We are advised by the vendor that the property is leasehold is 999 years from 1988. The current service charge is approximately £10 per annum and there is no ground rent. A buyer is advised to obtain verification from their solicitor or legal advisor.



Road Map



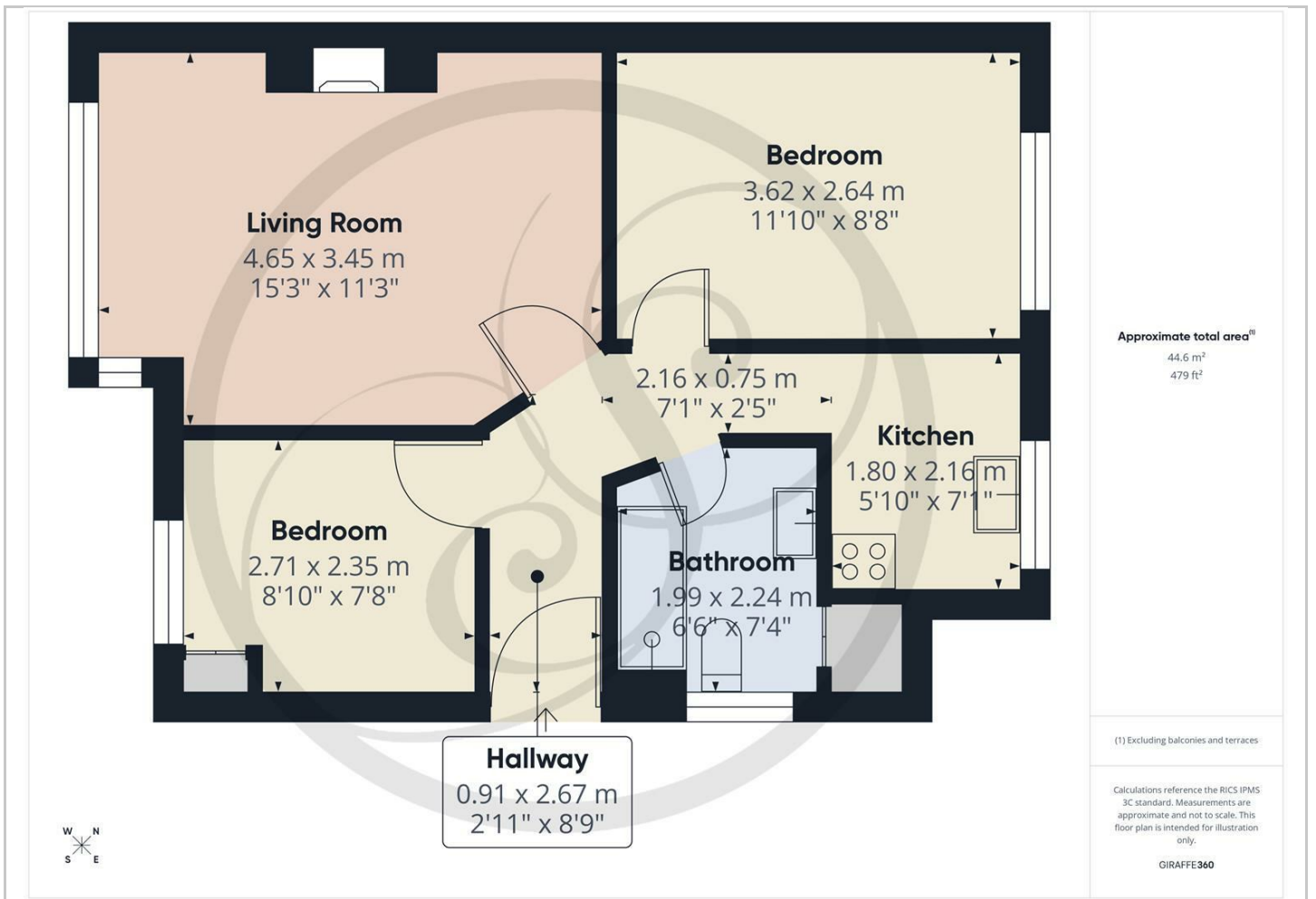
Hybrid Map



Terrain Map



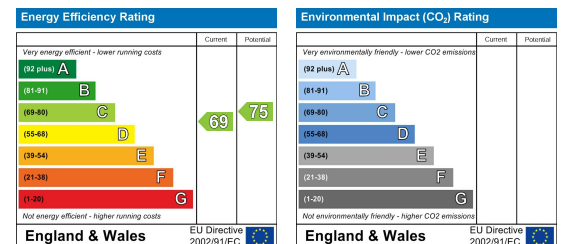
Floor Plan



Viewing

Please contact our Chapel Allerton Sales Office on 0113 237 0999 if you wish to arrange a viewing appointment for this property or require further information.

Energy Efficiency Graph



These particulars, whilst believed to be accurate are set out as a general outline only for guidance and do not constitute any part of an offer or contract. Intending purchasers should not rely on them as statements of representation of fact, but must satisfy themselves by inspection or otherwise as to their accuracy. No person in this firm's employment has the authority to make or give any representation or warranty in respect of the property.