



56 Pilemarsh  
, Bristol, BS5 9NT

**Asking price £470,000**





# 56 Pilemarsh



## Description

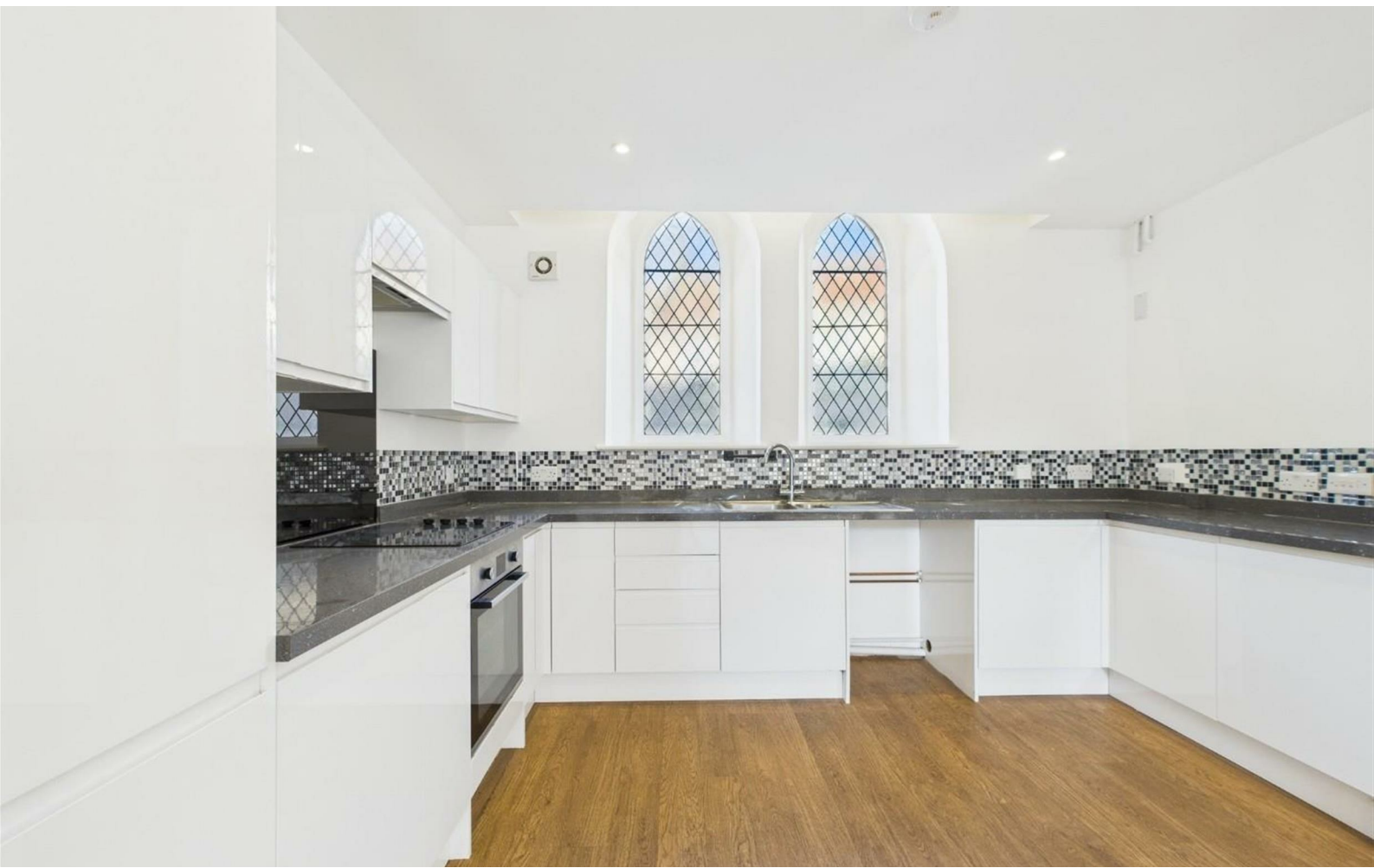
Welcome to this charismatic, 3 storey church converted town-house; which is set only a short walk away from St George's Park and within close proximity to Church Road and all of its attractions: bars like the Rubino Lounge, pubs like The Red Church and plentiful shops and cafés!

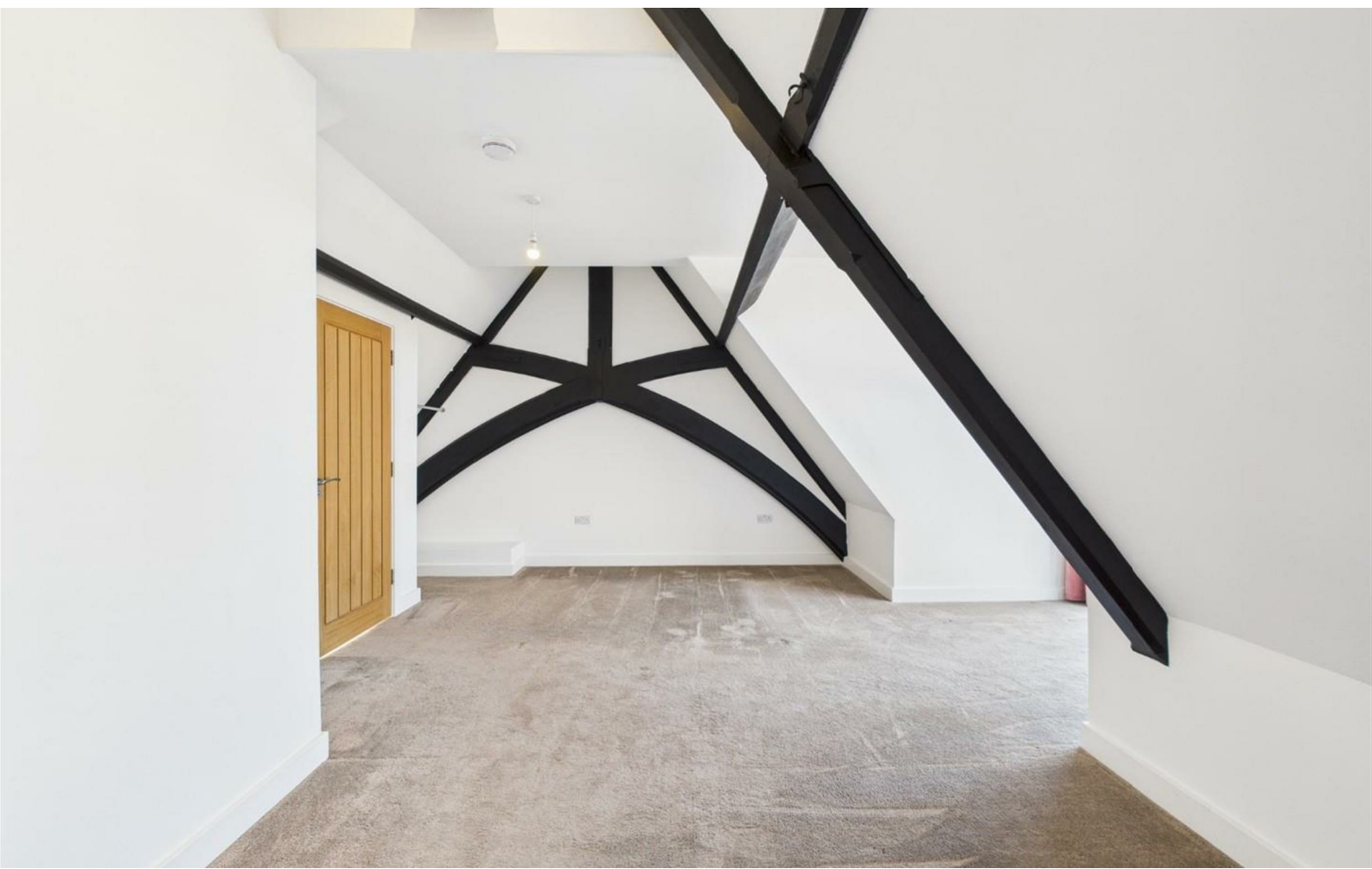
This property still has many original and stand-out features, complimentary to its historic existence, as well as having a modern finish that gives such a unique style.

You're first greeted by a spacious hallway, which also contains a storage cupboard under the stairs and a downstairs WC. This then leads through to a commodious, open plan living arrangement, beaming with light and giving an airy feel. This also includes a well-fitted, modernised kitchen at the front of the property.

Towards the rear, a full width lounge/dining area, which also comprises of beautiful

- NO ONWARD CHAIN
- ENCLOSED REAR SOUTHERLY FACING GARDEN
- OPEN PLAN LIVING SPACE
- THREE ENSUITE DOUBLE BEDROOMS
- VAULTED BEAM CEILINGS
- SIDE COURTYARD
- MODERN KITCHEN
- FEATURE STAINED GLASS WINDOW
- AIR SOURCE HEAT PUMP CENTRAL HEATING
- CLOSE TO CHURCH ROAD







Floor Plan

