

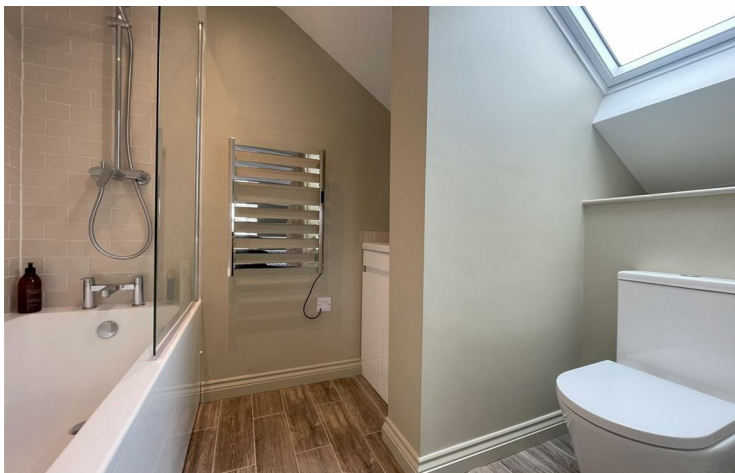


**THE OLD FOUNDRY FORE STREET,  
POLRUAN, PL23 1PQ  
GUIDE PRICE £700,000**



**TOTAL FLOOR AREA : 1921 sq.ft. (178.5 sq.m.) approx.**

Whilst every attempt has been made to ensure the accuracy of the floorplan contained here, measurements of doors, windows, rooms and any other items are approximate and no responsibility is taken for any error, omission or mis-statement. This plan is for illustrative purposes only and should be used as such by any prospective purchaser. The services, systems and appliances shown have not been tested and no guarantee as to their operability or efficiency can be given.  
Made with Metropix ©2024



**AN OPPORTUNITY TO PURCHASE A SPACIOUS 4 BEDROOM DETACHED PROPERTY SITUATED OFF FORE STREET IN A QUIET AND PEACEFUL SETTING WITH LOVELY VIEWS TO THE HARBOUR. LARGE WALLED GARDEN, SEPARATE OUTBUILDING AND USEFUL BASEMENT.**

**Important Notice MISREPRESENTATION ACT 1989 and PROPERTY MISDESCRIPTIONS ACT 1991**  
Messrs. May, Whetter & Grose for themselves and for vendors and lessors of this property whose agents they are give notice that: (i) the particulars are set out as a general outline for the guidance of intended purchasers or lessees, and do not constitute, nor constitute part of, an offer or contract; ii) all descriptions, dimensions, reference to condition and necessary permissions for use and occupation, and other details are given without responsibility and any intending purchasers or tenants should not rely on them as statements or presentations of fact but must satisfy themselves by inspection or otherwise as to the correctness of each of them. (iii) no person in the employment of Messrs. May, Whetter & Grose has any authority to make or give any representation or warranty whatever in relation to the property.



**The Old Foundry Fore Street, Polruan, Cornwall, PL23 1PQ**

**The Location**  
 Polruan lies on the east bank of the river Fowey, just inside the entrance to Fowey harbour. The village has its own general stores, sub post office, tea rooms, two public houses and a long established boat building and repair yard. The village is connected to Fowey, which has a wider range of small shops and businesses catering for most day to day needs, by a regular passenger ferry. The immediate area is surrounded by many miles of wonderful coast and countryside, much of which is in the ownership of the National Trust.

Once away from the immediate local lanes, there are good road connections to the motorway system via the A38/A30. Railway connections (London Paddington) can be made at a number of local stations (Par, Liskeard & Lostwithiel).

**The Property**  
 Situated just a short walk from the centre of the village, this lovely home has been renovated and reconfigured to make the most of the stunning harbour views.

There are large walled gardens and a separate outhouse, currently used as an additional storage area, along with a basement and courtyard.

Renovated by the current owners, the property offers well presented accommodation over 3 floors. The open plan living space has a large picture window with fabulous views over the village to the harbour and Fowey beyond. With engineered oak flooring and plenty of windows, this lovely room is light and airy. There is a wood burner set on a slate hearth in the sitting room area and the stylish kitchen is well appointed with a number of integrated appliances including under the counter fridge, fridge/freezer, electric oven, and Bosch dishwasher. There is an attractive granite worktop over.

There is a further area with separate sink and drainer, wine fridge and storage cupboards and more than ample space for dining table and chairs.



The landing has stairs leading to the second floor and a door opens to a large principal bedroom suite with two Velux windows and further window with views to the harbour. An elegant ensuite has a panelled bath with shower over, WC and wash basin. A Velux window allows for natural light.

Stairs from the landing also lead down to the lower floor where there are three generous sized double bedrooms, all individually designed. One of which as an external door opening to steps leading to the garden.

A family bathroom has a panelled bath with shower over, WC and wash basin.

The hallway has space and plumbing for washing machine and tumble dryer.

Contents may be available by separate negotiation.

**Outside**  
 The property is accessed via a shared pathway from Fore Street. A substantial timber gate affords privacy and opens to a courtyard with access to the basement, currently used for storage. Steps lead up to the lovely private gardens, enclosed by attractive stone walling and laid mainly to lawn. There is a separate stone outbuilding also used for storage but has potential for other uses, subject to the necessary permissions. Steps lead up to the front door and access to the open plan living area.

**Council Tax Band - E**

**EPC Rating - E**

**Freehold**

**Services**  
 None of the services, systems or appliances at the property have been tested by the Agents.

**Viewing**  
 Strictly by appointment with the Sole Agents: May Whetter & Grose, Estuary House, Fore Street, Fowey, Cornwall, PL23 1AH. Tel: 01726 832299 Email: info@maywhetter.co.uk

**Local Authority**  
 Cornwall Council