



Market Place West, Ripon, HG4 1BN

£210,000



## Market Place West, Ripon, HG4 1BN

A rare opportunity to buy this modern penthouse apartment combining architectural elegance with a fabulous west-facing roof terrace, occupying a prime top floor position in this prestigious converted building with the market place and a fantastic range of amenities on the doorstep.

With generous proportions bathed in natural light, complimented by myriad stylish features, this stunning individual home represents an exciting opportunity to experience luxurious city centre living. Created with great individual flair and thoughtful design, the spacious and intuitive configuration combine to provide great versatility and could appeal to a wide range of discerning buyers.

**SOLO SAY:** For any penthouse, a private roof terrace is the defining feature... With expansive proportions, sweeping views and a favourable westerly orientation, this one is sure to impress and will be a treat that will never grows old.

**Agent's Note:** This property is currently let on an AST until October 2026.





With electric heating, double glazing and attractive parquet flooring throughout, the accommodation comprises; hallway with storage cupboard, stunning open-plan living space with a large west-facing window.

A wide opening leads to a bright and eye-catching breakfast kitchen where you'll find a sleek, modern range of units together with a range of integrated appliances. It is from here you can step onto the roof terrace with your morning coffee.

There are two good size double bedrooms and a stylishly appointed shower room.

A private car parking space is located in a gated carpark.

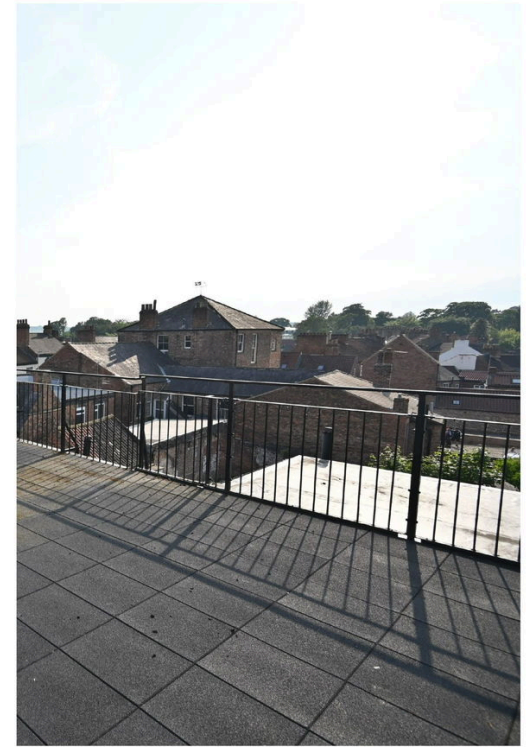


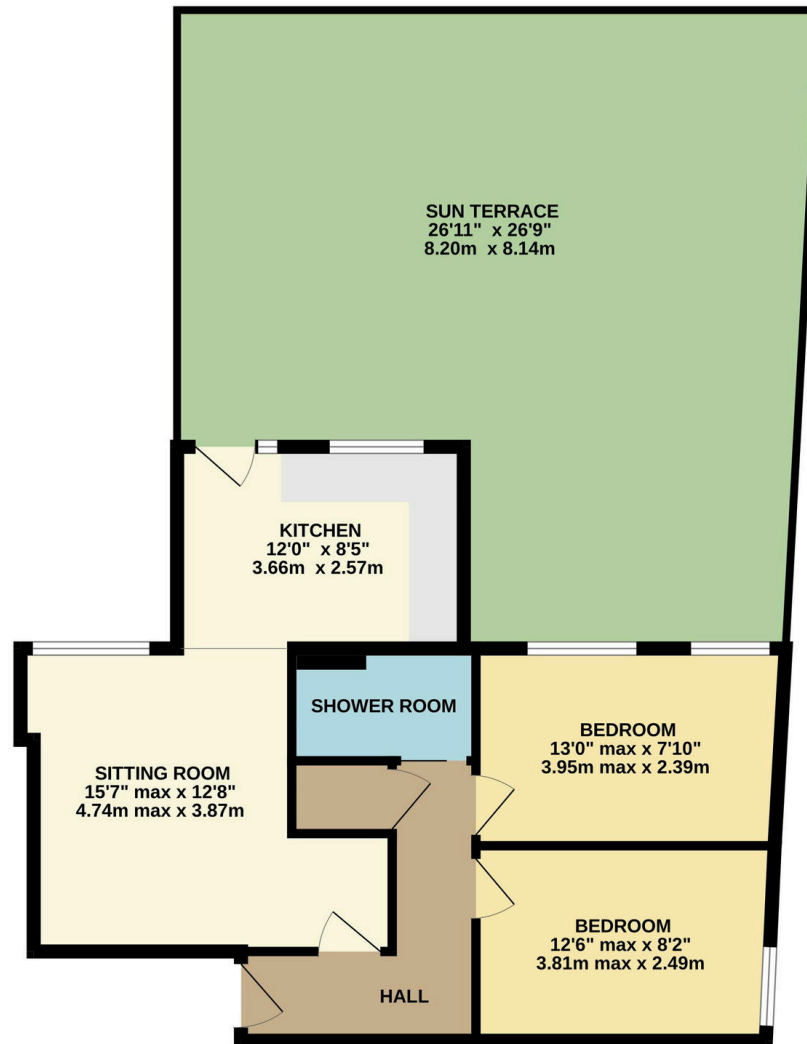


A prime location by any measure, Burton Chambers stands proudly on the western side of the historic and picturesque market place.

Residents will be able to step straight into this vibrant centre and sample the many boutiques, galleries and larger stores while taking advantage of a choice of cafés, restaurants and bars.

Ripon has an enviable choice of schools including the renowned Ripon Grammar and there are first class sports and leisure facilities in the locality. Regular travellers and commuters are served by an excellent road network, regular bus services and railway stations at Harrogate and Thirsk.





### The Penthouse, Burton Chambers

Whilst every attempt has been made to ensure the accuracy of the floorplan contained here, measurements of doors, windows, rooms and any other items are approximate and no responsibility is taken for any error, omission or mis-statement. This plan is for illustrative purposes only and should be used as such by any prospective purchaser. The services, systems and appliances shown have not been tested and no guarantee as to their operability or efficiency can be given.  
Made with Metropix ©2024

**01765 608203**

SOLO PROPERTY MANAGEMENT LTD

Visit our showroom at 13 Fishergate, Ripon, HG4 1EA

EMAIL

Info@solopm.com

www.solopropertymanagement.com

