

Stockwell Park Walk, Brixton, SW9

1 bedroom flat - purpose built for sale

£375,000

Leasehold

Property Details

This stunning one-bedroom apartment with a private winter garden is set on the second floor of a secure, luxury modern development and has been thoughtfully designed with contemporary living in mind. Exceptional heat and sound insulation ensure a peaceful environment alongside lower energy costs. The impressive open-plan reception room spans over seven metres in length and is flooded with natural light from large, energy-efficient windows, offering ample space to lounge, dine and cook. The sleek kitchen features grey matte cabinetry, stylish worktops, generous storage and fully integrated appliances. The reception leads onto a private winter garden terrace, a versatile space that can be enjoyed all year round. The spacious bedroom benefits from built-in wardrobes and direct access to the terrace. A neutrally finished bathroom includes both a bathtub and separate shower, while additional hallway storage enhances practicality. Further benefits include lift access, video intercom entry, bike storage and well-maintained communal areas.

Features

- One double bedroom
- Winter garden usable all year round
- Over 600 square feet
- Secure modern build
- Lift access
- Bike storage
- Sought-after location close to Brixton, Stockwell and Clapham
- Short walk to the Victoria and Northern Lines
- Chain-free

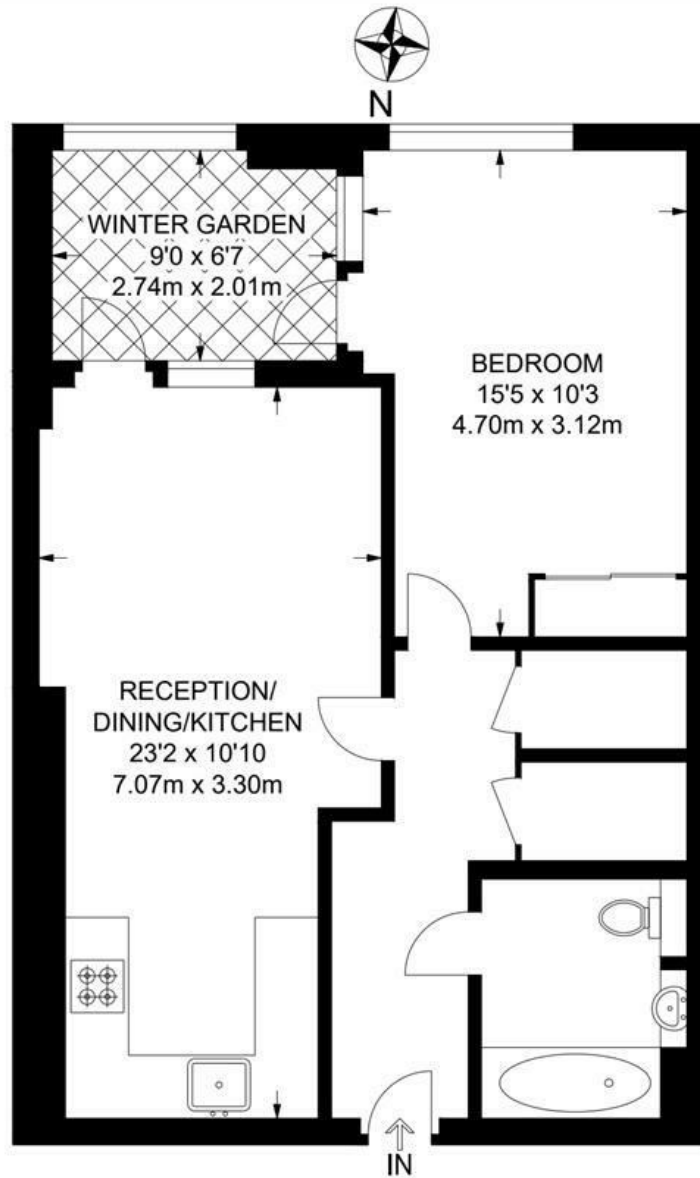
Council tax band C EPC rating C (78)



Stockwell Park Walk, Brixton, SW9

Stockwell Park Walk, SW9
1 Bedroom Flat

APPROXIMATE GROSS INTERNAL AREA: **629 SQ FT / 58.4 SQ M**



SECOND FLOOR



While we try our very best, floor plans are produced as a guide only and we take no responsibility for the precise accuracy with which any property is represented.

Stockwell Park Walk, Brixton, SW9

