



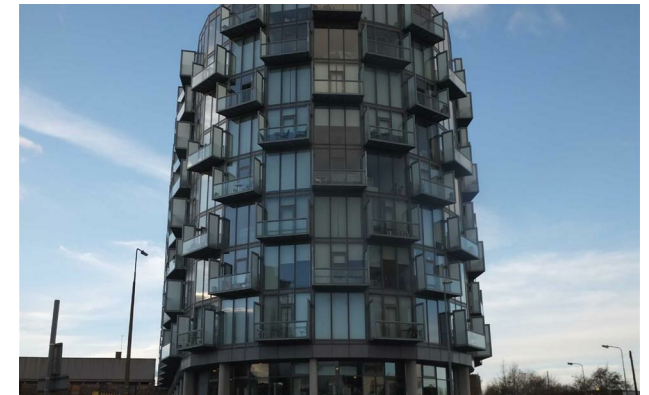
*jordan fishwick*

Apt 6.10 Abito, 85 Greengate, M3 7ND  
£900 Per Calendar Month



## Abito Salford M3 7ND

£900 Per Calendar Month



### The Property


Available late July. This Sixth floor STUDIO apartment offers any city dweller convenience and style in one. Located close to Deansgate, Victoria Station and Selfridges this apartment offers ample storage with a built in unit at the centre of the property incorporating a fitted kitchen, shower cubicle and toilet plus a fold away double bed . There is a balcony off the living space and floor to ceiling windows which brings lots of light exposure to the property. On site concierge. NO parking. Furnished. Tax Band A. EPC Rating C.

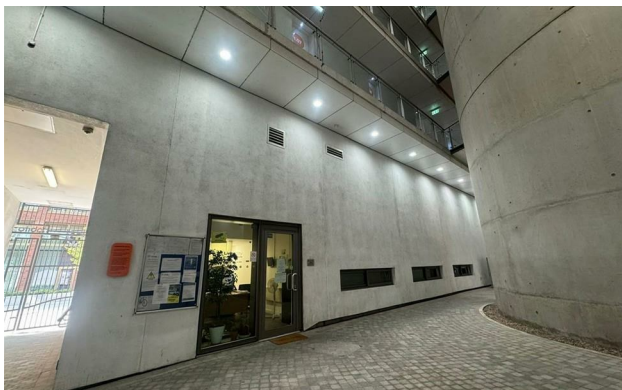
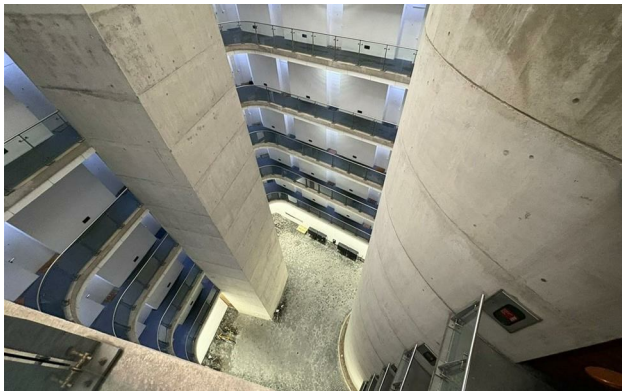
**\*VIDEO/ PHOTO OFFERS NOT ACCEPTED - PLEASE CALL TO BOOK A VIEWING\***



- Available late July
- STUDIO apartment
- Balcony
- City Centre Location
- EPC Rating C
- Tax Band A
- No Parking
- On site Concierge



Energy Efficiency Rating		
	Current	Potential
Very energy efficient - lower running costs		
(92 plus) <b>A</b>		
(81-91) <b>B</b>		
(69-80) <b>C</b>		<b>80</b>
(55-68) <b>D</b>	<b>69</b>	
(39-54) <b>E</b>		
(21-38) <b>F</b>		
(1-20) <b>G</b>		
Not energy efficient - higher running costs		
<b>England &amp; Wales</b>	EU Directive 2002/91/EC 	





These particulars are believed to be accurate but they are not guaranteed and do not form a contract. Neither Jordan Fishwick nor the vendor or lessor accept any responsibility in respect of these particulars, which are not intended to be statements or representations of fact and any intending purchaser or lessee must satisfy himself by inspection or otherwise as to the correctness of each of the statements contained in these particulars. Any floorplans on this brochure are for illustrative purposes only and are not necessarily to scale.

Offices at: Offices at Chorlton, Didsbury, Disley, Hale, Glossop, Macclesfield, Manchester Deansgate, Manchester Whitworth Street, New Mills, Sale, Wilmslow and Withington