



19 Highfield Road
Thrapston, NN14 4NL

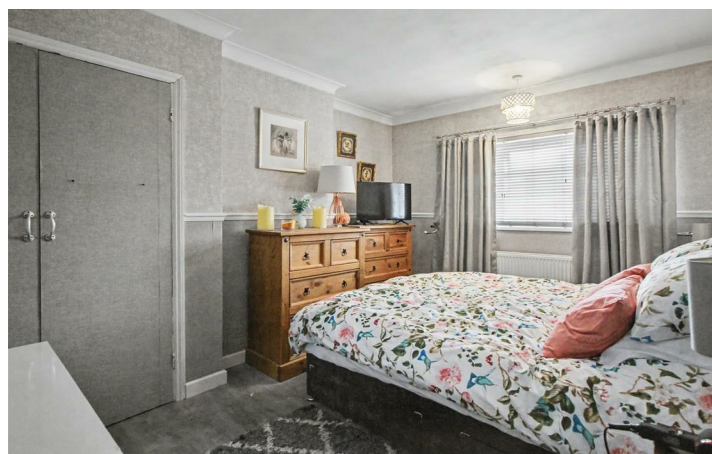
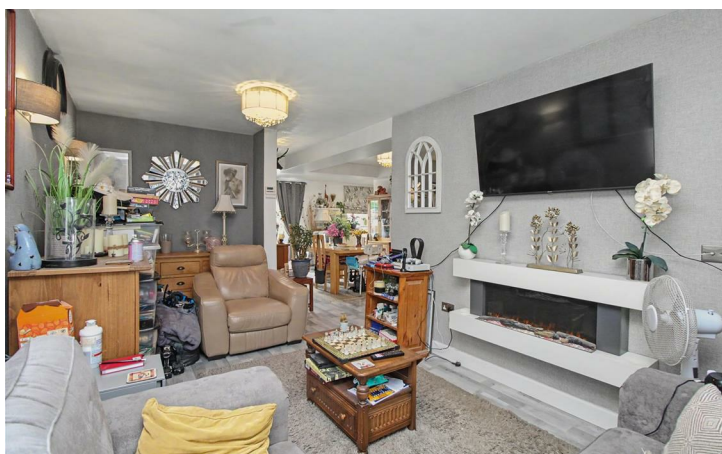
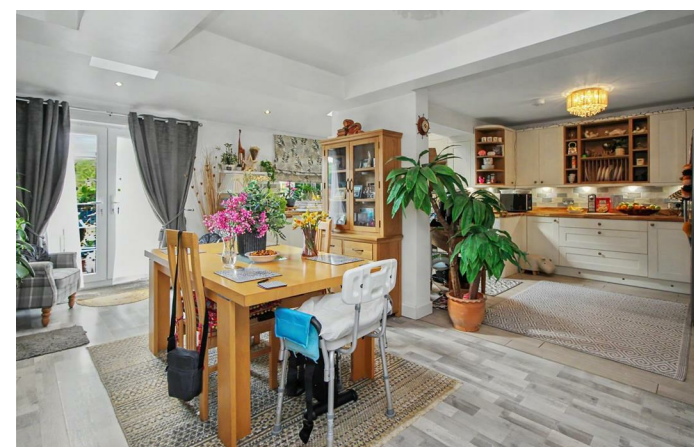


Simpson & Partners

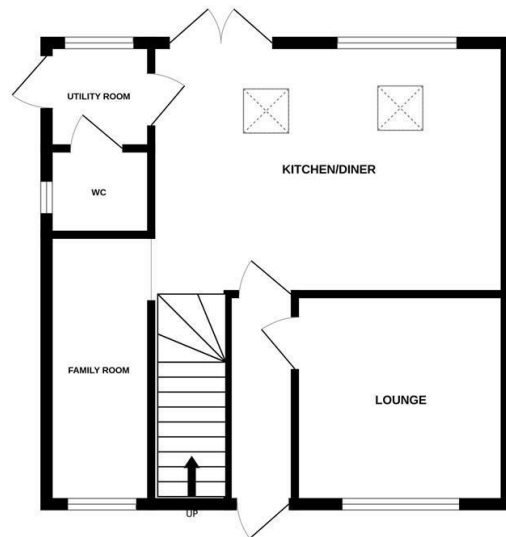
Situated in the historic market town of Thrapston, this extended three-bedroom semi-detached family home offers spacious and versatile living, ideal for modern family life. The ground floor accommodation comprises a welcoming entrance hall, a cosy lounge featuring a charming gas fireplace, and an impressive extended open-plan kitchen/diner/family room—perfect for entertaining and everyday living. A separate utility room with guest WC adds further practicality. To the first floor, you will find three well-proportioned bedrooms and a family bathroom. Externally, the property boasts a generous rear garden with a decking area leading onto a large laid lawn, complete with a summer house and substantial garden shed, all enclosed by a timber fence surround. To the front, a large gravel driveway provides off-road parking for multiple vehicles. Call now book a viewing!!

£372,500

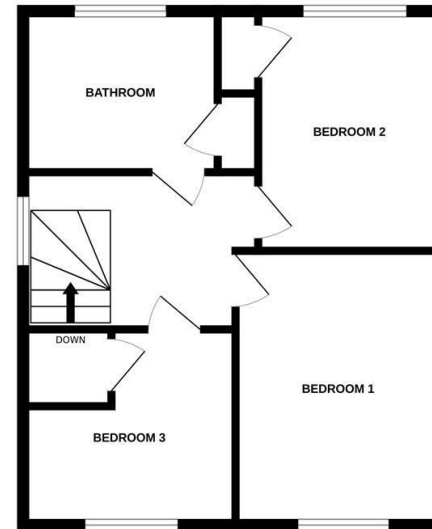
 3  1  2



GROUND FLOOR
491 sq.ft. (45.6 sq.m.) approx.



1ST FLOOR
497 sq.ft. (46.2 sq.m.) approx.



TOTAL FLOOR AREA : 988 sq.ft. (91.8 sq.m.) approx.

Whilst every attempt has been made to ensure the accuracy of the floor plan contained here, measurements of doors, windows, rooms and any other items are approximate and no responsibility is taken for any error, omission, or mis-statement. The plan is copyright to Simpson and Partners and is for illustrative purposes and should only be used as such by any prospective purchaser. The services, systems and appliances shown have not been tested and no guarantee as to their operability can be given.
Made with Metropix ©2026



Energy Efficiency Rating

	Current	Potential
<i>Very energy efficient - lower running costs</i>		
(92 plus) A		
(81-91) B		
(69-80) C		
(55-68) D		
(39-54) E		
(21-38) F		
(1-20) G		
<i>Not energy efficient - higher running costs</i>		
England & Wales	EU Directive 2002/91/EC	



When you buy with Simpson and Partners, you know **you'll be in safe hands**. From the moment you walk through our doors, we'll make you **feel truly welcome**. Our sales consultants and financial advisors will take you through **every step of the process**, offering **free expert advice** along the way, from help choosing the right mortgage and insurance through to finding your conveyancer. And if you need help selling your home too, **with over 20 years of local experience, you can trust us to get you moving**.



**Simpson
& Partners**

Making Every
Journey Personal



01832 731222

thrapston@simpsonandpartners.co.uk

<https://www.simpsonandpartners.co.uk/>

43-45 High Street, Thrapston, Northants, NN14 4JJ