



Ormond Crescent, TW12

£2,000,000

Dexters



Ormond Crescent, TW12

This is a detached five bedroom family home that comes with the benefit of no onward chain. It has tons of space to entertain, is neatly configured over two floors, and there is a very good reason that houses on this road do not hang around.

As you enter the house you will find a large reception room, conservatory/ dining room, separate modern kitchen, laundry room, games room or bedroom with underfloor heating, wc, and a guest suite with dressing room and en-suite.

The front garden and driveway certainly look impressive as you approach the house by foot or car. The rear garden impresses further, providing a great sense of space and privacy for those wanting the benefits of outside living and entertaining.

The first floor offers three good size bedrooms and a contemporary family bathroom.

Ormond Crescent is one of Hampton's finest roads. In the heart of the village you are moments away from cafés, shops and the train station, with great schools on your doorstep including state and private.

Features

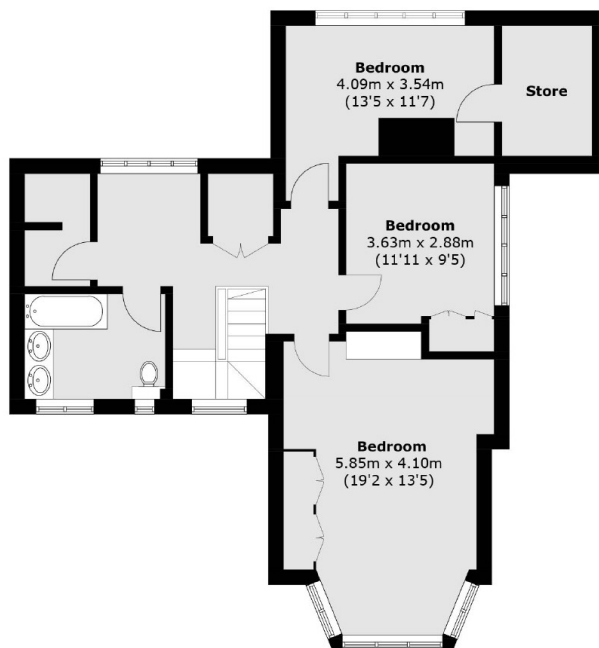
- Detached
- Large Driveway
- Five Bedrooms
- Spacious Private Garden
- Annexe and Summerhouse
- No Onward Chain



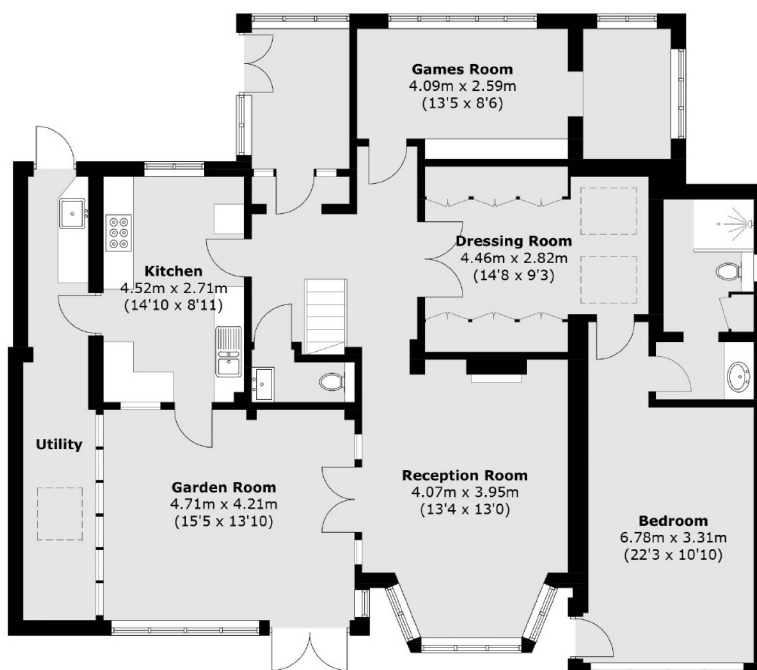




Ormond Crescent, Hampton, TW12



First Floor



Ground Floor

Total area (approx.): 230.7 sq. m (2,483.2 sq. ft)

Dexters

Hampton
93 Station Road
Hampton
TW12 2BD
Sales
020 8255 7777

Energy Rating: D. We aim to make our particulars both accurate and reliable. However they are not guaranteed; nor do they form part of an offer or contract. If you require clarification on any points then please contact us, especially if you're traveling some distance to view. Please note that appliances and heating systems have not been tested and therefore no warranties can be given as to their good working order.

 **RICS** | Regulated
Estate Agent
and Letting Agent

[dexters.co.uk](https://www.dexters.co.uk)