



White House Green Street, Shenley
WD7 9BA
Guide Price £1,250,000

We feel truly privileged to be marketing one of Shenley's most iconic properties. Set back from the road behind a large front garden this beautiful house is surely one of Shenley's most sought after homes. Offered for sale CHAIN FREE it offers it's next owners the opportunity to create their dream home. There is a generous footprint and substantial gardens surrounding the house giving ample scope to truly make this your own.

In need of modernisation and updating, the current layout of the property offers four bedrooms, two bathrooms (one downstairs), large double aspect living room, spacious kitchen with living/dining room and separate utility room, totalling in excess of 2300sq'. The layout can be remodelled to offer expansive living space to suit your needs, and there is scope for further development (stpp).

The property also benefits from a double garage with brick built storage shed and driveway for multiple vehicles. The views to the back are simply stunning adding to the charm of this unique property.

Viewings are strictly by appointment. Needless to say - this property is a MUST VIEW!

EPC Rating:



Front Porch

Lounge
23'6 x 16'11 (7.16m x 5.16m)

Kitchen Diner
22'4 x 16' (6.81m x 4.88m)

Utility

Bathroom

Downstairs WC

Landing

Bedroom One
17'5 x 11'4 (5.31m x 3.45m)

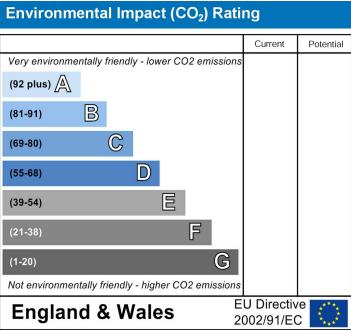
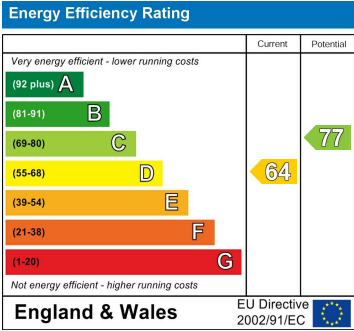
Bedroom Two
16'5 x 10'2 (5.00m x 3.10m)

Bedroom Three
13' x 9'3 (3.96m x 2.82m)

Bedroom Four
11'8 x 9'3 (3.56m x 2.82m)

Family Bathroom

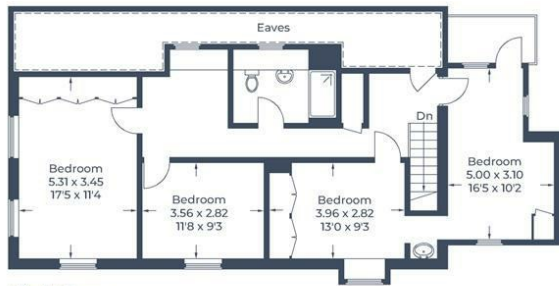
Double Garage & Parking
18'5 x 17' (5.61m x 5.18m)
Double garage and driveway for several cars



20 Andrew Close, Shenley | Herts WD7 9LP
Tel: 01923 856464 | Email: info@shenleyestates.com



Approximate Gross Internal Area
 Ground Floor = 94.2 sq m / 1014 sq ft
 First Floor = 83.8 sq m / 902 sq ft
 Outbuildings = 37.9 sq m / 408 sq ft
 Total = 215.9 sq m / 2,324 sq ft (Excluding Eaves)



First Floor



Ground Floor

Illustration for identification purposes only,
 measurements are approximate, not to scale.
 © CJ Property Marketing Produced for Susmans Estates