



# Haven Way

London, SE1

£3,000 per month  
(£692.31 per week)

A stunning penthouse apartment found in this modern development boasting a huge wraparound decked terrace, two double bedrooms, two bathrooms and a further dining room/study on to living area.





# Haven Way

## London, SE1

- Penthouse Apartment
- Wrap Around Decked Terrace
- Two Double Bedrooms
- Two Bathrooms
- Further Bedroom/Dining room/Study
- Available unfurnished





The area is home to London's most iconic landmark, Tower Bridge and is within the vicinity of many attractions such as The Shard, Tate Modern and Tower of London. The area boasts a variety of bars and restaurants and is a short walk to the delights of Bermondsey Street, Maltby Street & Borough markets. Although The City is within walking distance the area is well connected with excellent transport links via London Bridge & Tower Hill stations as-well as the river taxi.

**Minimum Term:** 6 months  
**Deposit Required:** £3,461.54  
**Local Authority:** London Borough of Southwark (Council Tax)  
**Council Tax Band:** E  
**EPC Rating:** B  
**Unfurnished**

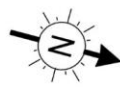
Energy Efficiency Rating		
	Current	Potential
Very energy efficient - lower running costs		
<b>A</b> (91-100)		
<b>B</b> (81-90)	81	83
<b>C</b> (69-80)		
<b>D</b> (55-68)		
<b>E</b> (39-54)		
<b>F</b> (21-38)		
<b>G</b> (1-20)		
Not energy efficient - higher running costs		
England, Scotland & Wales EU Directive 2002/91/EC		

### *Chestertons Tower Bridge Lettings*

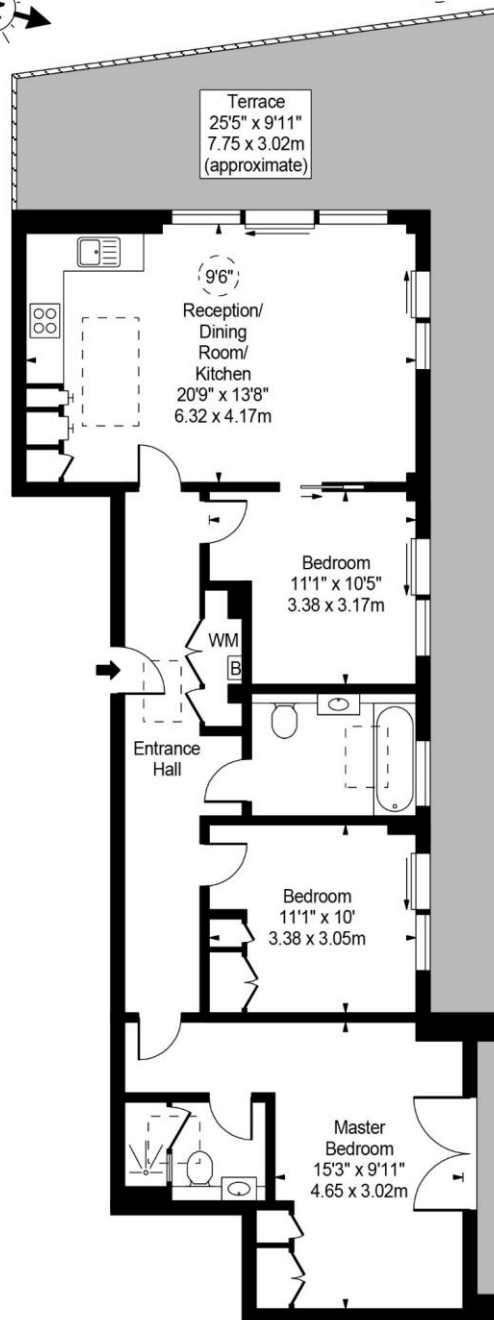
220 Tower Bridge Road  
 Tower Bridge  
 London  
 SE1 2UP  
[lettings.towerbridge@chestertons.co.uk](mailto:lettings.towerbridge@chestertons.co.uk)  
 02073576911  
[chestertons.co.uk](https://www.chestertons.co.uk)

Additional tenant charges apply (fees apply to non-AST tenancies only)  
 Tenancy Agreement Fee: £300  
 References per Tenant/Guarantor: £60  
 Inventory check (approx. £100 – £250 inc. VAT)  
[chestertons.co.uk/property-to-rent/applicable-fees](https://www.chestertons.co.uk/property-to-rent/applicable-fees)

## Haven Way, SE1



○ - Ceiling Height



Fifth Floor

Approx Gross Internal Area **958 Sq Ft - 89.00 Sq M**

For Illustration Purposes Only - Not To Scale  
www.goldlens.co.uk  
Ref. No. 011825M

Chesterton Global Ltd trading as Chestertons for themselves and for the vendor of this property whose agents they are, give notice that (i) these particulars do not constitute any part of an offer or contract, (ii) all statements contained within these particulars are made without responsibility on the part of Chestertons or the vendor, (iii) whilst made in good faith, none of the statements contained within these particulars are to be relied upon as a statement or representation of fact, (iv) any intending purchasers must satisfy themselves by inspection or otherwise as to the correctness of each of the statements contained within these particulars, (v) the vendor does not make or give either Chestertons or any person in their employment any authority to make or give representation or warranty whatsoever in relation to this property. Wide angle lenses may be used. ©Copyright Chestertons | Chesterton Global Ltd | Registered Office 40 Connaught Street, Hyde Park, London W2 2AB Registered Company Number 05334580.



This paper is  
100% recyclable