



## DINSDALE ROAD, SE3

£2,350 per month

Garden flat  
Maisonette  
Two bedrooms  
Separate kitchen  
Utility room  
Energy rating: d

@marshandparsons  
marshandparsons.co.uk

MARSH &  
PARSONS

# ABOUT THE PROPERTY

A modern two bedroom maisonette with a private garden, situated on a desirable residential street.

Ideally located between Greenwich and Blackheath. The historic Greenwich park, popular museum and the centre are all close by. Blackheath Village, renowned for their markets, restaurants, cafés, and more are within easy walking distance. The nearest station, Maze Hill offers regular services to London Bridge, London Cannon Street, City Thameslink and Farringdon. A quick change at Greenwich station (one stop) provides access to the DLR for direct links to Bank, Canary Wharf, and Stratford. The Jubilee line at North Greenwich is also easily accessible.



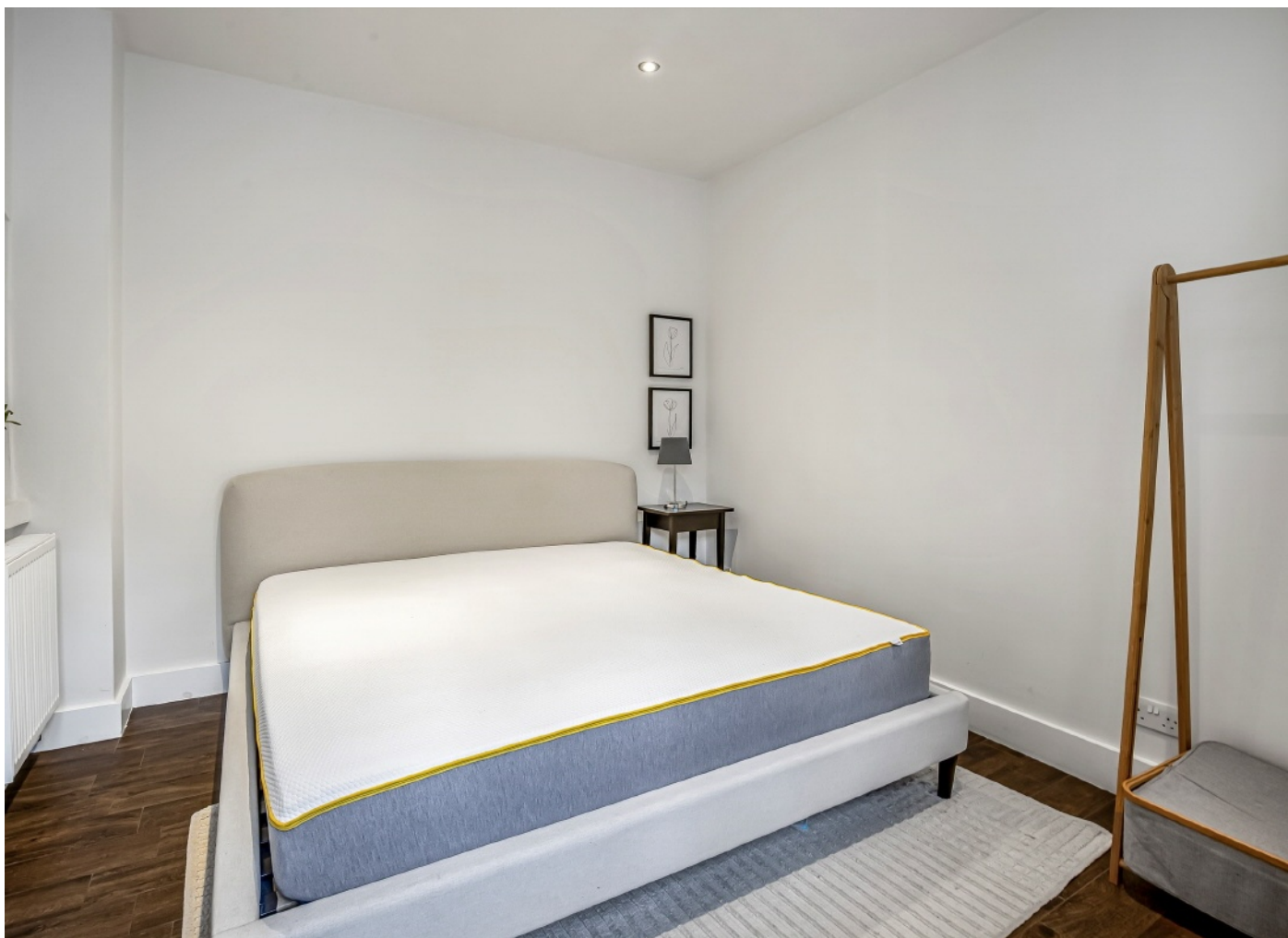




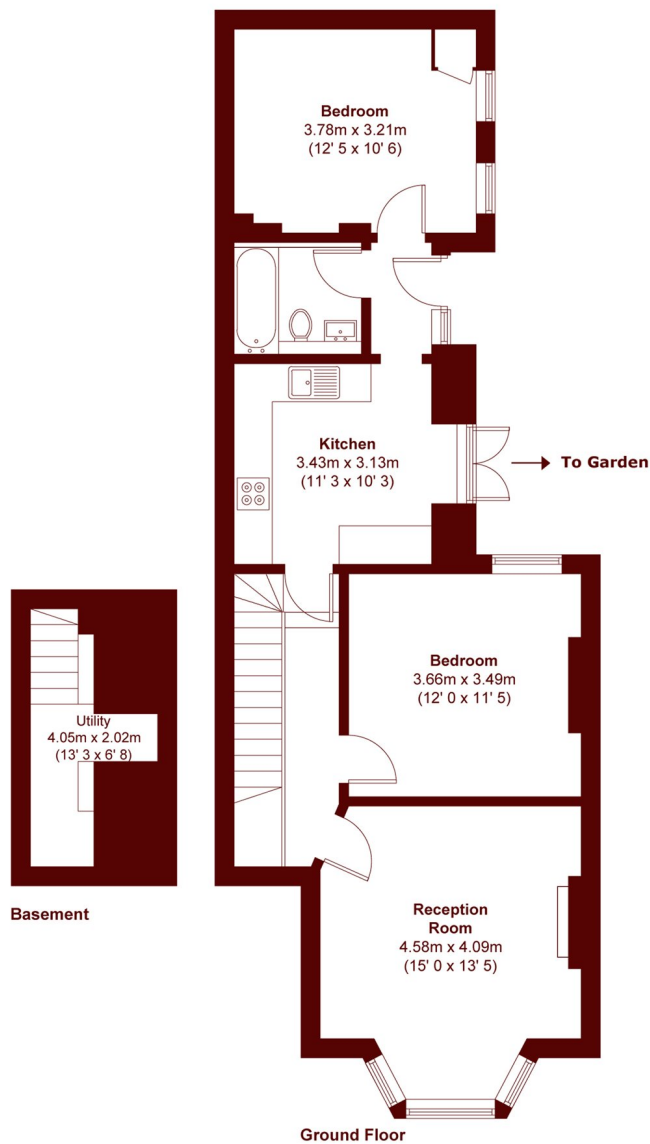
## FURTHER DETAILS

This property offers a spacious front reception room with period features such as a bay window and fireplace. There is a modern eat-in kitchen with french doors accessing the private garden.

Both bedrooms are double in size with storage and the bathroom is well maintained with tiles and a shower.



# STEP INSIDE DINSDALE ROAD



APPROX. GROSS INTERNAL FLOOR AREA  
814 SQFT / 75.6 SQM

**Greenwich**  
020 8815 2230

Energy Rating: D We aim to make our particulars both accurate and reliable. However, they are not guaranteed; nor do they form part of an offer or contract. If you require clarification on any points then please contact us, especially if you're traveling some distance to view. Please note that appliances and heating systems have not been tested and therefore no warranties can be given as to their good working order

**MARSH &  
PARSONS**