



Greenbank Court, Sherwood Way, Epsom

Guide Price **£300,000**



Greenbank Court, Sherwood Way

Epsom

Modern one-bedroom first-floor apartment in popular Noble Park. Bright living area, contemporary kitchen, double bedroom, parking, landscaped grounds, and close to transport and town centre. Call today to view!

Council Tax band: C

Tenure: Leasehold

EPC Energy Efficiency Rating: B

EPC Environmental Impact Rating: G

- Popular Noble Park Development
- Beautifully Presented
- First Floor
- Spacious Living
- Contemporary Kitchen
- Double Bedroom
- Modern Bathroom
- Allocated Parking
- Easy Reach Of Town Centre & Station



Step into this beautifully presented one-bedroom apartment, ideally located within the highly desirable Noble Park development. Positioned on the first floor, this impressive home is perfectly suited to first-time buyers, professionals, or anyone seeking a stylish and convenient base in Epsom.

The property opens into a welcoming entrance hall with useful storage cupboards, leading through to a bright and spacious living area with ample room for both relaxing and dining. The contemporary kitchen is well-designed, featuring modern fittings and integrated appliances, creating a sleek and practical space for cooking. The generously sized double bedroom benefits from plenty of natural light and offers excellent storage potential. A modern bathroom, finished with quality fixtures, provides a comfortable space to unwind.

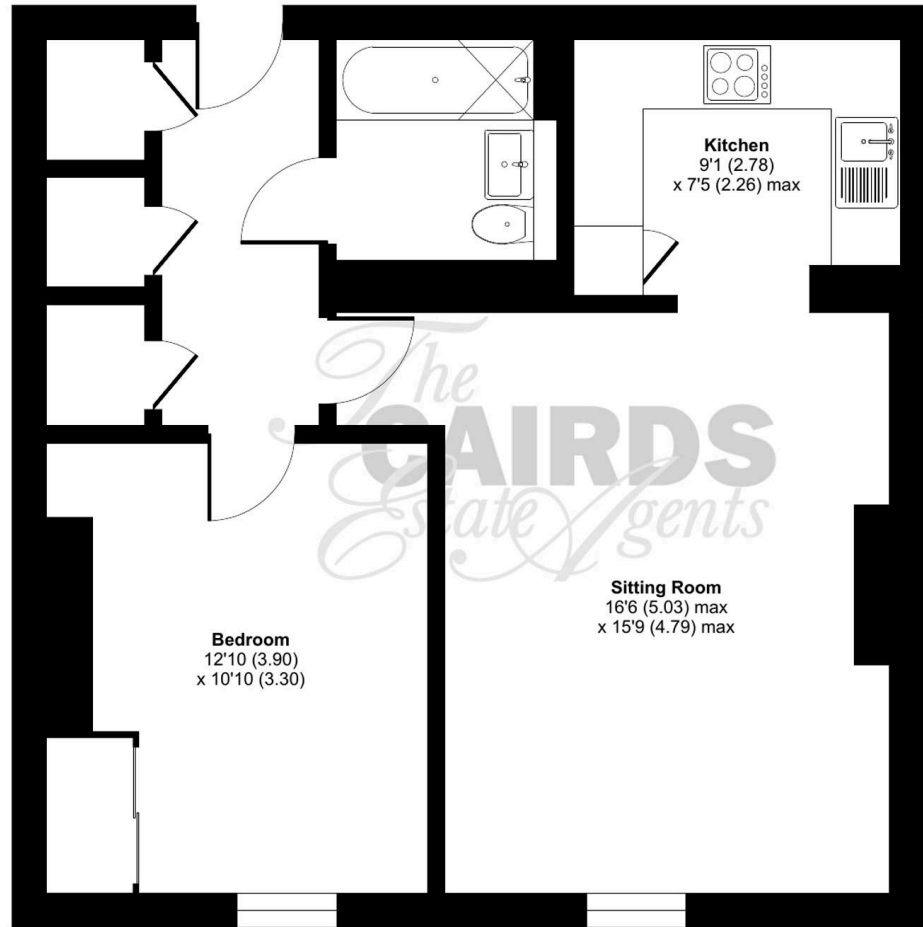
Residents can enjoy well-maintained communal grounds, offering a peaceful escape with mature trees and attractively landscaped gardens. The property also benefits from an allocated parking space, along with additional visitor parking.

Ideally situated, the apartment is close to excellent transport links, local amenities, and leisure facilities, with Epsom town centre just a short distance away, offering a wide selection of shops, cafés, and restaurants. This is a fantastic opportunity to acquire a modern home in a highly regarded development.

Sherwood Way, Epsom, KT19

Approximate Area = 583 sq ft / 54.1 sq m

For identification only - Not to scale



FIRST FLOOR





Cairds The Estate Agents

Cairds The Estate Agents, 128-130 High Street - KT19 8BT

01372 743033 • homes@cairds.co.uk • www.cairds.co.uk